

**SCOTTISH RITE FOUNDATION
 2009 ANNUAL REPORT
 THE CHILDREN'S HOSPITAL**

STATISTICAL SUMMARY

In 2009, the Scottish Rite Foundation (SRF) helped 589 children receive speech, language, learning, and/or parent education services at The Children's Hospital. Five-hundred, six children received individual or group therapy; 47 children received multidisciplinary cleft palate clinic evaluations; 25 children received Scottish Rite Foundation support to attend "Talking with Technology Camp;" and 11 children, with siblings and parents, participated in a family-centered, parent-education group to enhance communication skill development. This latter program, "First Steps," was a full-day or overnight learning experience for families considering assistive communication technology for their young child. This program was supported with a generous contribution to the Scottish Rite Foundation from *Rollie R. Kelley Family Foundation*. Services were provided at the main hospital (Aurora) and at three network-of-care sites throughout the metropolitan Denver area (Parker, Littleton, and Westminster), as well as at Care by The Children's Hospital - Pueblo (see separate report from Pueblo). Children who received help through The Children's Hospital programs ranged in age from less than one year through schoolage with the majority of children in the age range three through six years. Compared to 2008, 18 (3.0%) fewer children received treatment at The Children's Hospital with Scottish Rite Foundation or *Rollie R. Kelley Family Foundation* support.

The table below shows the contributions by Scottish Rite Foundation and *Rollie R. Kelley Family Foundation* to evaluation and therapy programs and to camp and parent education programs in 2009. The overall average cost per child for services at The Children's Hospital in 2009 was \$ 1,579, and a remarkably small investment for substantial returns in language and communication development. Through this investment in their future, children of all ages with disabilities such as autism, language delay, hearing loss, cleft lip and palate, head injury, dyslexia, voice disorders, fluency dysfunction, and other disorders of speech and language development, received help that would not have otherwise been available.

Program (# Children)	Scottish Rite Foundation or <i>Rollie R. Kelley Family Foundation</i> contribution	Average Cost per Child
Therapy or Cleft Palate Clinic (553)	\$875,569	\$1,583
Talking with Technology Camp (25)	\$50,226	\$2,009
* <i>First Steps Camp</i> (11)	\$4,208	\$383
TOTAL (589)	\$930,003	\$1,579

*Includes support to four siblings and nine parents who attended this weekend program.

DEPARTMENT PROGRAMS

With support from the Scottish Rite Foundation, the Department of Audiology, Speech Pathology, and Learning Services continued on-going clinical programs of individual and group therapy, cleft palate clinic and other multidisciplinary clinic evaluations, innovative outreach and camp programs, reading services, and parent education programs.

Well into its third decade, "Talking with Technology Camp" continues to grow and improve. Substantial financial support from *Rollie R. Kelley Family Foundation* since 2005 has allowed the camp to expand and enhance its personal care attendant, sibling, and trainer programs. Through these programs, the impact of camp far exceeds the week-long adventure that the campers enjoy. The personal care attendant program allows children with very significant disabilities who need 24/7 care to attend camp, often a first time away from home for these special youngsters. The sibling program encourages siblings to share their experiences as a brother or sister of a child with significant disabilities with other siblings. The sibling program has inspired at least two young persons to pursue a career in the disabilities service community. The trainer program is especially important; it allows graduate students, paraprofessionals, teachers, and speech-language pathologists who work in the schools to learn the latest technology for communication access. This experience benefits not only the child who attends "Talking with Technology Camp," but also those children who the trainee treats during the following year.

The transition from school to the workplace is often difficult for children with special needs. To help improve this transition, Maija Gulens, speech-language pathologist, joined the advisory panel of Project SEARCH – a pilot program designed to provide meaningful on-the-job training and education to high school students with special needs. Involvement on the advisory panel included commitments to: raising awareness about the program; participating in quarterly meetings; attending Project SEARCH events throughout the year; assisting with the review of applications; and committing to one-year of service. Maija has conducted on-site task analysis at work sites. On-site analysis included meeting with unit managers, assessing the workplace demands and their impact on individuals with various disabilities, breaking down the work tasks in a step-wise fashion and taking photos to support instruction, summarizing the cognitive/literacy/language levels required by the tasks, and gauging the types of social skills required. This very important and exciting program advocates the integration of people with special needs throughout the workplace, while providing real-life experiences that might not otherwise be available to these individuals without the proper supports in place.

SCOTTISH RITE FOUNDATION
2009 ANNUAL REPORT
THE CHILDREN'S HOSPITAL

The Children's Hospital is fortunate to employ several bilingual speech pathologists who share their knowledge with our staff and colleagues in the community. Joyanne McShea, speech-language pathologist, took the opportunity while vacationing in Argentina to exchange speech-language therapy ideas and techniques with local speech-language pathologists. She learned articulation and language intervention strategies for Spanish-speaking children, and, in turn, she educated Argentinean therapists about fluency. Back in Colorado, Joyanne met with the bilingual therapists at The Children's Hospital and in the community to share what she had learned in Argentina regarding the treatment of Spanish-speaking youngsters who have not mastered the unique Spanish-language phonemes, the tap /r/ and trill /r/.

To improve cost-effectiveness of therapy and to encourage learning in a peer-supported environment, Learning Services successfully implemented dual therapy options for children with reading disabilities. This is similar to group therapy, but with only two children. While the emphasis on high quality learning remediation remained the same, this option increased child participation and overall remediation outcomes through dynamic social interaction and increased self esteem.

EDUCATION AND TRAINING

In concert with the mission of The Children's Hospital, the Department continued to support education and training of graduate students and clinical colleagues with internship and fellowship opportunities, outreach training programs, and conferences and lectures.

Audiology Services provided a 12 week internship for a third year Audiology student from University of Colorado - Boulder and a third year Audiology student from A.T. Stills University in Arizona. Audiology Services also provided a one-year externship opportunity for a fourth year Audiology doctoral student from the University of Colorado - Boulder.

Speech-Language Services mentored eight graduate students in training, five from University of Colorado – Boulder, and one each from the University of South Carolina, Vanderbilt University, and the University of New Mexico. In addition, two newly-graduated speech-language pathologists joined the staff as clinical fellows.

To meet the needs of the many children with communication disorders who live outside the Denver metropolitan region, clinical staff provided outreach and trainings on evaluation and management of children with special communication needs in rural Colorado and Montana. Communities served included Yuma, Buena Vista, Grand Junction, and Montrose in Colorado, and Bozeman, Montana.

SCOTTISH RITE FOUNDATION
2009 ANNUAL REPORT
THE CHILDREN'S HOSPITAL

These programs provided professional educational training and consultation as well as parent support for families of children with special communication needs in those communities.

The department offered two well-received professional education conferences in 2009. As a component of the *Bill Daniels Center for Children's Hearing*, Mary Pat Moeller, Ph.D., internationally-recognized expert on language development in children who are deaf, delivered the Fourth Annual Advances in Children's Hearing Lecture. Dr. Moeller described current developments in word learning in children, especially children who are deaf or hard-of-hearing. This rich research area holds great promise for uncovering learning strategies and building on these strategies to enhance a child's overall language development. Her scholarly lecture continues the series initiated by the Daniels Fund 10-year grant to the department awarded in 2005.

The 2009 Language and Learning Conference, "Assessing and Treating Communication Challenges in Youth with Developmental Disabilities, emphasizing Fragile X and Down Syndrome", featured presentations by Leonard Abbeduto, Ph.D., from the University of Wisconsin-Madison and Karen Riley, Ph.D. from the University of Denver. Participants gained a better understanding of the genetic bases for these disorders, the core behavioral features that influence learning and language development of children with Fragile X and Down Syndromes and appropriate assessment and treatment principles as applied to children with these disorders. In addition to the audience in Denver, the conference was successfully video-linked to five locations in Colorado; Montrose, Grand Junction, Pueblo, Ft. Collins and Greeley. Audience feedback was very positive and all off-site locations expressed the desire to increase access to continuing education through teleconference technology.

As a follow-up to the 2008 *Guidelines Development Conference on the Identification and Management of Infants and Young Children with Auditory Neuropathy*, the department sponsored several national and international follow-up conferences in 2009. National follow-up conferences were held in Albuquerque, New Mexico (New Mexico School for the Deaf); Los Angeles, California (University of California – Los Angeles; UCLA), Chapel Hill, North Carolina (University of North Carolina), and Cincinnati, Ohio (Cincinnati Children's Hospital). International conferences were held in London, England; Pretoria and Cape Town, South Africa; Sao Paulo, Brazil; and Auckland and Christchurch, New Zealand.

In addition to these educational activities, staff presented numerous lectures to colleagues and families, and mentored peers and other professionals on topics related to childhood language disorders throughout the state, region, nation, and world in 2009.

LEADERSHIP

The Children's Hospital staff continued to contribute to the hospital and our community in leadership roles.

Deborah Hayes, *Kelley Family/Schlessman Family Scottish Rite Masons Chair in Childhood Language Disorders*, Chair, Audiology, Speech Pathology, and Learning Services, and Co-Chair, the *Bill Daniels Center for Children's Hearing*, contributed to state, national, and international activities in newborn hearing screening, pediatric audiologic diagnosis, and early intervention for childhood hearing loss. She continued to serve on the Colorado State Department of Public Health and the Environment, Infant Hearing Advisory Committee and the international consortium for childhood hearing. Deborah is a Professor at the University of Colorado, School of Medicine, Departments of Physical Medicine and Rehabilitation, and Pediatrics; and the University of Colorado – Boulder, Department of Speech, Language, and Hearing Sciences. In 2009, Deborah received the Outstanding Service Award for The Children's Hospital Medical Staff for "...outstanding service to The Children's Hospital and its patients and families..."

Kathy Boada, Director of Audiology, Speech Pathology and Learning Services, remained active both within the hospital leadership and in community and professional organizations. At The Children's Hospital, Kathy served on the Goals Performance Success (GPS) advisory committee – our new performance evaluation and professional development tool. For the state of Colorado, she served in several positions on the Board of Directors for the Colorado Speech-Language Hearing Association (CSHA), including Past-President, Website Committee Chair, and Licensure Committee member. She continued to consult with the Colorado Department of Education as a member of the statewide Speech-Language Advisory Committee. As a part of on-going efforts to ensure that high-quality continuing education offerings are available to speech-language pathologists throughout our state, Kathy expanded the video-linked presentations of The Children's Hospital's Annual Language and Learning Conference and CSHA's Annual Conference to five state-wide locations (Pueblo, Grand Junction, Montrose, Fort Collins, Greeley & Durango).

In 2009, Kim Lich, Manager, Speech-Language Services, was active both within the hospital and in professional organizations. At The Children's Hospital, Kim continued to serve on the Leadership Development Team, which develops and implements training education for hospital leaders. She participated and contributed to the Colorado Speech and Hearing Association (CSHA) state licensure project. This initiative is a two-to-five year commitment to pursue state licensure for speech-language pathologists. Kim also joined the Speech Pathology and Audiology Collaborative.

SCOTTISH RITE FOUNDATION
2009 ANNUAL REPORT
THE CHILDREN'S HOSPITAL

This is a team of speech-language pathologists and audiologists representing a variety of different therapy settings working with the Department of Health Care Policy and Financing to create a Speech and Audiology policy for Medicaid and Medicare guidelines.

Sue Dreith has served as Manager of Audiology Services for 10 years. In 2009, she was a member of the Colorado State Department of Public Health and Environment, Infant Hearing Advisory Committee as well as the Colorado Cochlear Implant Consortium. Sue was a member of the team who presented numerous national and international conferences on auditory neuropathy in 2009.

Katie Johansen is serving her second year as the Manager of Learning Services. Over the year, she was active within the hospital as well as the larger community. She began a hospital-based program of leadership growth which will continue into 2010. Katie gathered current, nationwide research on learning disability remediation best practice to help guide the team as they formulated group and individual language-based learning disability therapy programs. Within the community, Katie served as a board member of the International Dyslexia Association-Rocky Mountain Branch and remained an active member with the Learning Disabilities Association of America and the Autism Society of Colorado. At various times through the year, Katie presented on the topic of learning disabilities to school districts, other hospitals and community groups.

REPORT FROM THE ENDOWED CHAIR

The Scottish Rite Foundation's gift of the *Kelley Family/Schlessman Family Scottish Rite Masons Endowed Chair in Childhood Language Disorders* in 2003 has afforded program improvements for services to children with language disorders throughout the state. Funding from the endowed chair became available in September 2003; since that time support has been provided for program development and monitoring, and staff education. The income from the endowed chair supports Valerie Hernandez, Program Assistant to the *Kelley Family/Schlessman Family Scottish Rite Masons Chair in Childhood Language Disorders*, in coordinating Scottish Rite Foundation patient databases, The Children's Hospital Appraisal Committee Meetings, the Annual Luncheon and other special events (e.g., Lunch and Learn and Program Directors' Meeting), financial tracking for The Children's Hospital RiteCare program, and financial tracking and billing approvals for statewide RiteCare programs. Valerie initiates and designs the statewide publication *RiteCare RiteView*, a periodic publication for and about the statewide SRF clinical programs. Valerie's invaluable assistance makes it possible for the chair holder to devote her efforts for the Scottish Rite Foundation to program development and implementation, grant writing, and service evaluation.

SCOTTISH RITE FOUNDATION
2009 ANNUAL REPORT
THE CHILDREN'S HOSPITAL

In 2009, this support allowed the Chair holder to sponsor and present at Lunch and Learn programs, collaborate in grant writing with Vernon Ingraham, coordinate a Scottish Rite Foundation Program Directors meeting, and assist in award and other programmatic initiatives.

The income from the endowed chair funded the following specific projects in 2009:

- Salary Support for Valerie Hernandez, Program Assistant
- Salary Support for Deborah Hayes, Chair Holder
- Scottish Rite Foundation Annual Luncheon
- Learning Services outreach to Grand Junction
- Lunch and Learn programs at St. Mary's Life Center, The Children's Hospital, and Sterling Regional Med Center
- Chair Holder and Program Assistant travel to programs in Colorado including Pueblo, Colorado Springs, Boulder, Fort Collins, Sterling, Greeley, La Junta, Montrose, and Grand Junction
- Chair Holder, Program Assistant, Executive Secretary, and Scottish Rite Foundation President travel to Cortez
- Coordination of the *Colorado Masons Benevolent Fund* graduate student scholarship and the *Dwight A. Hamilton Graduate Student Scholarship in Speech-Language Pathology* awards program
- Organization and implementation of the follow-up conferences on *Identification and Management of Infants and Young Children with Auditory Neuropathy* both nationally and internationally
- Chair holder presentations at national and international professional meetings
- Publication of the 2010 Pictorial RiteCare Calendar
- Award to University of Colorado – Boulder for Cover Photo for 2010 Pictorial RiteCare Calendar
- Holiday Celebration expenses for various RiteCare Programs
- Conversion of 1986 information film to current DVD media

The Children's Hospital and the Department of Audiology, Speech Pathology, and Learning Services are indebted to the Kelley Family, Schlessman Family, and Scottish Rite Masons who made the endowed chair possible. In the coming years, the financial support from the chair will permit development of new programs, enhancement of staff expertise, improved accountability to the Scottish Rite Foundation, and continued national leadership in treatment of children with language disorders. Per The Children's Hospital Foundation's annual report to the Scottish Rite Foundation in December 2009, the June 30, 2009 market value of the Endowed Chair was \$2,195,766. The anticipated 2010 distributions to The Children's Hospital, Department of Audiology, Speech Pathology, and Learning Services will be \$115,008.

ACKNOWLEDGEMENT

This year has been reported as the worst economic downturn since the Great Depression. As the parents struggled with their personal economic crisis and institutions faced funding cuts, the Scottish Rite Foundation became a beacon of hope for children with language disorders and their families. Without the Scottish Rite Foundation, hundreds of children would not have received the services they needed to develop speech, language, social interactive, and cognitive skills. Because we know that a child cannot wait ~ for the economy to improve, for health insurance to become available, for new programs to be funded ~ we are more grateful than ever to the committed guidance of the Scottish Rite Foundation Board of Trustees for sustaining our care of children in these most difficult times. By “staying the course,” you have calmed our fears and allowed us to focus on the most important aspect of our work, the children.

Respectfully submitted,

Deborah Hayes

Deborah Hayes, Ph.D.

Kelley Family/Schlessman Family
Scottish Rite Masons Chair in
Childhood Language Disorders
Chair, Audiology, Speech Pathology,
and Learning Services
Co-Chair, *Bill Daniels Center for
Children's Hearing*
The Children's Hospital – Colorado

Professor, Physical Medicine and
Rehabilitation, and Pediatrics
University of Colorado, School of
Medicine

SCOTTISH RITE FOUNDATION 2009 ANNUAL REPORT CARE BY THE CHILDREN'S HOSPITAL – PUEBLO

STATISTICAL SUMMARY

As shown in the table below, the Scottish Rite Foundation (SRF) funded speech-language therapy for 79 children at Care by The Children's Hospital - Pueblo in 2009. The estimated cost of these services was \$125,057 with an average cost per child of \$1,583. Families came from as far as Creede and Monte Vista for services.

Program	# Children Served	Scottish Rite Foundation Contribution	Average Cost per Child
Individual or group therapy	79	\$125,057	\$1,583

PROGRAM DESCRIPTION

Care by The Children's Hospital – Pueblo hosted a press conference in December of 2009. The CoPRIG Foundation (Colorado Public Interest Research Group) selected the Pueblo clinic to announce their annual toy safety report. A child receiving speech therapy was featured in a photo in *The Pueblo Chieftain*.

Three video-linked conferences/meetings were hosted by the Pueblo staff in 2009: the Annual Conference on Language and Learning in April, the Scottish Rite Directors meeting in October and the Colorado Speech-Language-Hearing Association Fall Conference in November. Reducing the time and expense involved in travel is a benefit of technology that we will continue to take advantage of in 2010.

The annual SRF picnic at the ***Pueblo Zoo*** in September and Christmas party in December were again well attended and enjoyed by all.

ACCOUNTABILITY

The Child Development Inventory is used statewide as a clinical outcome measure. Martha Drake continues to coordinate this project and will present a poster session on the results at the upcoming RiteCare Conference in New Orleans in April. Pueblo added 60 test results to the database in 2009.

The Pueblo clinic continues to obtain good customer satisfaction ratings from The Children's Hospital survey conducted by Professional Research Consultants. In 2009, Care by The Children's Hospital – Pueblo received an overall percent of excellence score of 79.4% (goal 77.1%).

LEADERSHIP

Martha Drake serves on the Soaring Eagles Center for Autism (SECA) Clinical Advisory Board. She assisted with the Autism Walk in April. Kathryn Duren is a volunteer on the Colorado State Autism Commission. She collected and organized data from parent testimony hearings in the spring of 2009.

Anne McGann, augmentative-alternative communication specialist and consultant, continues to see children requiring an electronic communication device at the Pueblo clinic one-to-two times per month. She also conducts school consultations.

Kathryn Duren and **Martha Drake** presented an all day workshop in August on early language development techniques for early childhood educators in the Early Headstart Program in La Junta. Kathryn also gave an hour long talk to a group of pre-K to 5th grade Sunday school teachers on strategies to increase comprehension and retention of lessons.

In November, **Martha Drake** accompanied the *Bill Daniels Center for Children's Hearing* team to Cincinnati Children's Hospital to present a talk on speech-language intervention for children with auditory neuropathy.

Stacey Bernal started our Communication Disorder of the Month Display Board in our waiting room in January. Parents have appreciated information on topics such as hearing loss, augmentative and alternative communication, stuttering, etc.

ACKNOWLEDGEMENT

The Scottish Rite Foundation has helped families in southern Colorado obtain funding for speech-language therapy since 1987. In the past 23 years, approximately 1,200 children have received services in Pueblo and the surrounding area through the generosity of the Foundation. Thank you for your ongoing support.

Goals for 2010:

1. Martha Drake will present a poster session of the Colorado Clinical Outcomes Project at the RiteCare Conference in New Orleans in April.
2. Kathryn Duren, as leader of The Children's Hospital Stuttering Special Interest Team, will develop a clinical pathway for preschool stuttering therapy with input from the team.
3. The staff will supervise a graduate student from the Medical University of South Carolina in March.

Respectfully submitted,

Martha Drake, MA, CCC-SLP
Director Scottish Rite Foundation Program/Manager, Care by The Children's Hospital – Pueblo



Banner Health

**Sterling Regional
MedCenter**

**SCOTTISH RITE FOUNDATION
2009 ANNUAL REPORT
STERLING REGIONAL MEDCENTER**

STATISTICAL SUMMARY

Sterling Regional MedCenter is a small hospital located in Logan County, Colorado. It is a 41 bed hospital with rehabilitation services inclusive for Occupational, Physical and Speech Therapy services for acute care in-patients and out-patient rehabilitation services. The speech-language pathologist provides pediatric speech services for the birth through 3-year population (through Part-C), preschoolers, and for school age children, when referred for services by their physician or school district. Sterling is a rural community where most parents in the town and in outlying areas attempt to receive the speech and special services their children need through their schools and Community Center Boards.

The table below summarizes Scottish Rite Foundation (SRF) services to children in Sterling in 2009:

Program	# of Children Served	Scottish Rite Foundation Contribution	Average Cost per Child
Individual therapy	2	\$611	\$305

One child had been receiving speech therapy services through SRF at The Children’s Hospital, in Denver, and was able to continue with services and funding when the family moved to Sterling in 2009.

PROGRAM DESCRIPTION

Speech therapy services are available for children on an individual basis. Referrals can be made by physicians, nurse practitioners, school district personnel, outside agencies, Part-C and Child Find teams and parents.

ACCOUNTABILITY

Children are identified through previous evaluations as having a need for speech-language therapy. Parental involvement in goal setting and weekly therapy sessions is an expectation of the program. The speech therapist will utilize the Child Development Inventory when a new SRF patient is placed on the caseload to establish baseline and progress in the child’s speech-language skills.

LEADERSHIP

Of note this year was a Lunch and Learn educational program presented by Deborah Hayes, Ph.D., Kelley Family/Schlessman Family Scottish Rite Masons Chair in Childhood Language Disorders, The Children’s Hospital, Vernon Ingraham, Executive Secretary, Grand Cross, Scottish Rite Foundation of Colorado and myself, Scottish Rite Program Director at Sterling Regional MedCenter.



SCOTTISH RITE FOUNDATION
2009 ANNUAL REPORT
STERLING REGIONAL MEDCENTER

We had twenty-six hospital and community members in attendance for a lovely lunch, presentation and tour of our facility. It was a pleasure to share information about the Scottish Rite Foundation and our services at Sterling Regional MedCenter with the community. I have also attended the SRF annual luncheon and director's meeting to maintain networking with colleagues.

ACKNOWLEDGEMENT

It is with continued gratitude that I acknowledge the financial and professional support that I receive from the Scottish Rite Foundation. The families that have been helped have also expressed their sincere gratitude and SRF continues to provide a much needed resource for several families in this area.

It is my goal to continue to work toward making families aware of the services and funding that are available to help children with speech/language needs in northeast Colorado.

Respectfully submitted,

Meryl Stern, M.S., CCC-SLP
Speech-Language Pathologist
Sterling Regional MedCenter

**SCOTTISH RITE FOUNDATION
2009 ANNUAL REPORT
ST. MARY'S LIFE CENTER – GRAND JUNCTION**

STATISTICAL SUMMARY

As shown in the table below, in 2009, the Scottish Rite Foundation funded speech-language therapy for 98 children in Grand Junction and surrounding areas, including New Castle, Parachute and Collbran. The Foundation contributed \$168,903 to the children and their families for speech and language services. The average cost for speech language services was \$1,724 per child, in 2009.

Program	# Children Served	Scottish Rite Foundation Contribution	Average Cost per Child
Individual or group therapy	98	\$168,903	\$1,724

The children who received funding from the Scottish Rite Foundation for speech-language and literacy services in 2009 were between the ages of 13 months and 12 years. Children between the ages of 8 to 12 were seen through the summer programs only.

PROGRAM DESCRIPTION

The speech and language therapy programs continued to flourish at St. Mary's in 2009. We expanded our, theme based, group therapy programs, in both, variety of diagnoses and number of children served. Some children are seen in group therapy 2 times per week, other children receive one time week, group and one time week, individual treatment, and other children are only seen in individual therapy.

Group activities are offered for:
 Toddlers (12 months to 3 years)
 Preschoolers
 Kindergartners
 First Graders
 Early adolescents (In the summer program)

This year's themes included:

- Sledding
- Manners
- Trees/Apples/Leaves
- Monsters
- Fire Safety
- Goldilocks- 3 bears
- Little Red Riding Hood
- Circus
- Frogs
- Pizza
- Bees
- Camping
- Berry Patch
- Outside – Water play/Playground equipment

SCOTTISH RITE FOUNDATION
2009 ANNUAL REPORT
ST. MARY'S LIFE CENTER – GRAND JUNCTION

Therapy activities were centered on each theme for a 1-week period. Each group session included a book time, social interaction, gross and fine motor activities, and snack time. Therapy goals are varied based on participants need, which could be: social skills, articulation, phonology, language, using augmentative systems with peers/adults and/or literacy.

We also increased our usage of the Visi-Pitch for children who need to improve their vocal productions, including quality, loudness, pitch and articulation.

Two therapists have become members of the Western Slope Cleft Palate Team and are involved in quarterly clinics with the ENT, plastic surgeon, oral surgeons, and orthodontists.

With the guidance of The Children's Hospital - Colorado (TCH) Learning Center staff, our literacy program has expanded in the number of children enrolled, and some variation in program content.

As well, the outreach program from TCH has helped develop our knowledge and skill of our Augmentative Communication programs for children, with their guidance; we have increased the number of children who have access to augmentative systems and facilitated their effective usage at home and school.

One of the most exciting improvements to our program was the remodeling of the pediatric therapy areas with new paint and a few new decorations. We will also be purchasing some new therapy materials, thanks to the \$2,000 matching grant from the Scottish Rite Foundation.

ACCOUNTABILITY

The St. Mary's Speech and Language program participated in the statewide Scottish Rite accountability projects. It is requested that parents complete the Child Developmental Inventory for children between 0-5 years, upon entry into our speech therapy program and again every 6 months. The results of the parent observations and other standardized test results are reviewed with the families, to develop new therapy goals and facilitate the ongoing improvements of each child. We forwarded our Child Developmental Inventory results to Martha Drake to compile the data outcomes with other Colorado RiteCare programs.

We also review the completed data for our program in the areas of social skills, language comprehension, expressive language, and general development. Our 2009 data indicated that children who had been in our program for a 6-9 month period demonstrated an average improvement of:

- 7.8 months in Social Skills
- 5.9 months in Expressive Language
- 5.8 months in Language Comprehensive
- 3.2 months in General Development

St. Mary's Hospital also participates in the AVATAR Intelligent Surveys for improving care. The last data collected on the outpatient speech-language department was at 90.28% patient satisfaction level.

LEADERSHIP

We current have five fulltime speech therapists, three part time speech therapists, one speech therapy assistant, and two therapy aides.

Two of the speech therapists are currently on the Colorado Speech-Language-Hearing Association (CSHA) Board of Directors, and more than half of the therapists are participating members of CSHA. Our staff have leadership roles or are participating members in other community agencies including: The Autism Task Force, Interagency Counsel for the Child, Colorado Discoverability, School District #51 Child Find Assessment Team, the Head and Neck Cancer Team, and the Cleft Palate Team. Staff member have also presented at the Crossroads Conference on "Practical Strategies with Autism Spectrum Disorders" and guest lectured at Mesa State College Early Childhood Education Program.

To ensure continued quality care the speech language department staff has participated in a variety of continuing education opportunities throughout 2009. These included:

- Bridges Out of Poverty
- Vital Stimulation Certification Course
- Augmentative Communications - Use of Dynavox Systems
- Assessing and Treating Challenges in Youth with Developmental Disabilities: Fragile X and Downs Syndrome
- Impaired Behaviors: Recognition, Response, Reporting
- Neurologically Speaking - Applying Advances in Brain Science to struggling students
- Personality Differences
- Language Learning Disabilities

ACKNOWLEDGEMENT

The year, 2009, was the 24th year that the Scottish Rite Foundation has brought financial support for speech language treatment programs to Grand Junction and the surrounding areas. Over the years the Scottish Rite program has provided \$2,143,413 for 1,789 children receiving speech language and learning programs. They have also contributed \$56,000 for therapy materials and equipment, which includes the matching grant for 2009 of \$2,000. You have provided our children, their families and our community with a remarkable gift!

We at St. Mary's are very proud to say we are a "RiteCare" facility. Thank you for allowing us to continue to be associated with this distinguished organization.

I would especially like to thank the members of our review board, who faithfully attend the monthly meetings and take a special interest to ensure each child's needs are considered. These individuals include: Don Hobbs, James Smith, Richard Carnett, Jimmy McBride, and Larry Bangert.

Thank you, your generosity has changed many lives in our community.

St. Mary's Life Center Speech-Language Department Goals for 2010:

- To again partner with The Children's Hospital – Colorado to improve services for children, and families in the areas of cochlear implant/hearing loss, and literacy
- Increase the usage of teleconferencing to ensure ongoing education and networking with other professionals, at a decreased cost
- To develop a parent education/parent support program
- Ongoing development of cost effective /best practice treatment programs
- To seek opportunities to expand the community awareness of the Scottish Rite Foundation and their contributions to this community

Once again, we say, Thank You for the gifts you have given our programs and our community.

Respectfully,

Amy Brophy-Neilsen, M.S., CCC-SLP
Director St. Mary's Rite Care Program
Clinical Resource Specialist Outpatient Pediatric Therapy Program

**SCOTTISH RITE FOUNDATION OF COLORADO
2009 ANNUAL REPORT
UNIVERSITY OF NORTHERN COLORADO – GREELEY**

The University of Northern Colorado (UNC) Audiology and Speech Language Sciences Program provides educational opportunities to undergraduate and graduate students. Our Speech-Language Pathology and Audiology Clinic offers diagnostic and intervention services across the age span to individuals with communication needs. Preschool children who have speech, language, and hearing disorders receive intervention services through the generous support of the Scottish Rite Foundation of Colorado. Our focus is to identify and serve preschoolers in Northeast Colorado who may not otherwise receive speech and language therapy due to a lack of service availability or the absence of funding.

STATISTICAL SUMMARY

As shown in the table below, in 2009, sixteen youngsters received services through the University of Northern Colorado Audiology and Speech Language Pathology Clinic with a Scottish Rite Foundation contribution of \$9,812. Average cost per child was \$573.

Program	# Children Served	Scottish Rite Foundation Contribution	Average Cost per Child
Individual or group therapy	16	\$9,812	\$ 573

PROGRAM DESCRIPTION

The Talking and Listening for Preschoolers (TALP) program has been ongoing since 2007. This program is a literature-based interactive group that meets two times per week for two-hour sessions, resulting in 52 hours of direct intervention per semester. The curriculum focuses on the development of vocabulary and concepts, oral and written sound and word awareness, comprehension and expression of narratives and stories, and speech production skills. The parents of enrolled children meet with our speech-language pathologist and graduate student clinicians to share information and learn about language development strategies.

The Speaking and Signing Stories (SASS) is offered in the summer and is designed for children who are deaf or hard of hearing. It is a literature-based program that targets all components of language through the use of both speech and American Sign Language.

Due to growing faculty expertise and grant funding, the UNC Speech-Language Pathology and Audiology Clinic is serving more children and adults with cochlear implants. In 2009, 18 families received services.

ACCOUNTABILITY

The UNC Speech Language Pathology and Audiology Clinic professionals and their students monitor the progress of each child receiving speech-language intervention services. Prior to each semester (12-14 week sessions, 3 times per year), each child receives a pre-therapy file review, assessments as needed, and new goals and objectives are developed in consultation with the child's family. Progress is monitored and documented routinely and a detailed progress report is shared with the family at the conclusion of each semester. In addition, the parents of the children in TALP complete the Child Development Inventory.

Professional relationships were maintained in 2009 with Weld School District 6 and the Centennial BOCES. The successful collaborative efforts between UNC and public schools help to promote the availability of Scottish Rite Foundation funding in our community. In addition, such collaboration provides valuable insight into the needs of families seeking services for their children.

The participation of graduate students to provide services to children enables these future professionals to develop skills necessary to become leaders in their own communities. Supervisors provide detailed feedback to graduate students during their clinical sessions and evaluate their clinical competencies at the end of the semester. By educating the graduate clinicians about the Scottish Rite Foundation and the role of community service, we increase the likelihood that these students will be comfortable in similar roles in the future.

LEADERSHIP

In 2009, the partnership between the Scottish Rite Foundation and the UNC Audiology and Speech-Language Sciences program was honored during the dedication ceremony of the Scottish Rite Early Language Intervention Room. Dignitaries from the Scottish Rite Foundation and the University of Northern Colorado, faculty, and students were among the 45 participations. Our 2008 graduate student scholarship winners (Sara Robinson and Jennifer Weidmeier) were also recognized. The reception following the dedication included tours by our graduate students and a demonstration of early assistive technologies (funded through the Scottish Rite Foundation grant support).

Two graduate students in speech-language pathology received scholarships from the *Colorado Masons Benevolent Fund Association* in 2009: Allysa Winbourn and Kristen Michie. The students and their families attended the annual dinner and presentation of the awards. Their awards were also announced in the RiteCare newsletter.

The Scottish Rite Foundation awarded our clinic \$4,000 in matching funds in 2009. This award was in recognition of a grant from the Daniels Fund to two of our faculty members (Dr. Julie Hanks and Dr. Tina Stody) for their work in delivery services to individuals who have cochlear implants. The matching funds will be used to advertise our services in order to expand programs.

ACKNOWLEDGEMENT

The Scottish Rite Foundation of Colorado has significantly improved opportunities for many children and their families in Northern Colorado. It is so very important that clinics extend language intervention services to children who do not have the financial access to such services.

Program Goals for 2010:

1. We continue to be available to offer services to children in communities in the northeastern area. We intend to advertise our services through the media and our contacts with SLPs and other service providers in schools and other agencies.
2. This year we will increase the number of children served through Scottish Rite Foundation funding. This will occur through increased enrollment in TALP and other programs.
3. Follow up will occur with community contacts to continue to build collaborative relationships.

Respectfully submitted,

Kathleen Fahey, Ph.D.
UNC RiteCare Director



SCOTTISH RITE FOUNDATION 2009 ANNUAL REPORT

ARKANSAS VALLEY REGIONAL MEDICAL CENTER – LA JUNTA

STATISTICAL SUMMARY

In 2009, the Scottish Rite Foundation helped four families participate in Speech Language Pathology programs at Arkansas Valley Regional Medical Center. The Scottish Rite Foundation financial assistance program enabled three children to receive on-going treatment for language and/or articulation stimulation and parent education and one child to receive on-going treatment for fluency. Two of the children were able to “graduate” from treatment with one child improving enough to only require treatment at his school and the other no longer requiring treatment.

All four children received treatment at the outpatient rehabilitation clinic at Arkansas Regional Medical Center (AVRMC). We provide speech–language pathology services to pre-school children and school-age children who do not qualify for other programs or who need supplemental treatment in addition to their school program.

As the table below shows, the Scottish Rite Foundation contributed \$3,912 to AVRMC. The average cost per child for direct treatment was \$978.

Program	# Children served	Scottish Rite Foundation Contribution	Average Cost per child
Individual therapy	4	\$3,912	\$978

PROGRAM DESCRIPTION

The program at AVRMC is part of the outpatient rehabilitation clinic. We receive referrals from area physicians, physicians at the AVRMC specialty clinics, area school systems and the community in general. We serve adult and pediatric patients from Otero, Bent, Crowley, Kiowa, Prowers, Las Animas and Baca counties. The speech pathology department at AVRMC is the only hospital or clinic in the southeastern Colorado area (on the Highway 50 corridor east of Pueblo) that provides speech-language pathology services for children, except in the school setting.

ACCOUNTABILITY

The rehabilitation department at AVRMC participates in on-going departmental evaluations for quality assurance with focus on customer satisfaction, quality of treatment and use of evidence-based treatment techniques. We use patient surveys for all outpatient clients to assess the patient’s (or parent’s) satisfaction with the program. We also utilize the Global Rating of Change (GROC), which is a patient’s (or parent’s) assessment of progress, upon discharge.

Children are typically re-evaluated every six months at AVRMC using standardized tests to assess progress, update specific goals, update physicians and determine the need for continued treatment.



SCOTTISH RITE FOUNDATION
2009 ANNUAL REPORT
ARKANSAS VALLEY REGIONAL MEDICAL CENTER

LEADERSHIP

The staff at AVRMC consists of one full time speech language pathologist, Carol McEntyre, and one part-time speech language pathologist, Kathryn Overmeyer.

Carol is responsible for evaluation and treatment for hospital in-patients, pediatric and adult outpatients, residents of the skilled nursing facility and residents of the nursing care center. Kathryn performs evaluations and treatments for pediatric outpatients two to six hours per week.

Both Carol and Kathryn are members of the American Speech-Language Hearing Association. We serve a broad range of clients in the rural setting and constantly strive to stay knowledgeable of current evaluation and treatment techniques for both children and adults. Over the past year, we have participated in continuing education programs for both adults and children.

Carol also serves as a volunteer consultant for the Arkansas Valley Hospice Association, providing speech, language or swallowing evaluations and treatment as needed at no charge.

ACKNOWLEDGEMENT

The staff and administration of Arkansas Valley Regional Medical Center consider ourselves to be privileged to participate in the Scottish Rite Foundation's program in Colorado. Although the number of our participants in the Scottish Rite scholarship program continues to be small when compared to other programs, the treatment provided to our specific families is greatly appreciated. Without the Scottish Rite Foundation funding, we would not have been able to provide the much needed treatment to these children.

Our goal for 2010 continues to include expansion of the number of children served by increasing community awareness of the Scottish Rite Foundation. We hope to serve additional children in the outlying areas (Crowley, Kiowa, Prowers, Las Animas and Baca counties) who are not currently receiving needed treatment. To implement this goal, we plan to feature our involvement in the Scottish Rite Foundation's program during "Better Hearing and Speech Month" (May, 2010) with a newspaper article and to provide area physicians with information packets about the Scottish Rite Foundation's scholarships for area children.

Thank you for continuing to include Arkansas Valley Regional Medical Center as part of the Scottish Rite Foundation programs. We greatly appreciated your continued support.

Respectfully submitted,

Carol L. McEntyre, MS, CCC/SLP
Scottish Rite Program Coordinator
Arkansas Valley Regional Medical Center
1100 Carson Avenue
La Junta, CO 81050



**SCOTTISH RITE FOUNDATION
2009 ANNUAL REPORT
CHILDREN'S SPEECH & READING CENTER – FORT COLLINS**

STATISTICAL SUMMARY

Between January 1 and December 31 2009, Children's Speech & Reading Center (CSRC) provided free screens, individual and group speech, language and reading intervention, and assessment services to 342 children and *Hanen-More Than Words®* training to four families, in Northern Colorado. Of this number, 242 received direct therapy services (104 received screen or evaluation only). Through the generosity and support of the Scottish Rite Foundation of Colorado and other area organizations, sliding scale fee services were offered to 90% of the families served by CSRC. Scottish Rite funding provided services for 154 children in 2009. The decrease in number of children seen compared to 2008 is due to less number of children seen at CSRC's satellite early literacy programs at Thompson Valley Preschool (TVP) in Loveland and United Day Care (UDC)) during the fall of 2009, as well as increased need for individual therapy. Additional children will be seen at UDC (renamed "Teaching Tree") beginning January 2010.

As shown in the table below, the average cost per child varied depending on the service provided. For children who received center-based individual or group therapy, the average cost per child was \$2,026. For children enrolled in pre-school literacy programs, the average cost per child was \$391.

Program	#of Children	Scottish Rite Foundation Contribution	Average Cost per Child
Center-based individual or group therapy	48	\$97,239	\$2,026
TVP or UDC early literacy programs	106	\$41,430	\$391
TOTAL	154	\$138,669	\$900

We have spent \$138,669 of our allotted budget of \$140,000, under-spending our grant by \$1,331. We had a much higher than usual cancellation rate in October and November due to two snow days and illness, specifically swine flu, which lead to the \$1,331 short fall in spending. Without those cancellations (approximately 30 sessions for SRF funding clients), we most likely would have exceeded our grant.

Free Speech / Language and Reading screens continue to be offered on an ongoing basis. Our families come from the communities of Fort Collins, Loveland, Greeley, Estes Park, Johnstown, Berthoud, Windsor, and Wellington. CSRC provided 153 free screens in 2009.

SCOTTISH RITE FOUNDATION
2009 ANNUAL REPORT
CHILDREN'S SPEECH AND READING CENTER

A \$4,000 matching grant from the Scottish Rite Foundation allowed four families to participate in the *Hanen – More Than Words*® program for parents/caregivers of young children with autism.

PROGRAM DESCRIPTION

Scottish Rite Foundation (SRF) support continues to enable CSRC to provide a variety of individual and small group programs for early childhood communication and reading readiness. We continue to provide weekly language and literacy groups at Thompson Valley Preschool and United Day Care Centers. One-hundred, thirty-eight children were served at these sites in 2009 and 106 of them received funding assistance from the Scottish Rite Foundation. We also provide individual and group speech-language and reading therapy throughout the year, treating children with a variety of communication disorders, including; articulation delays, phonological process disorders, childhood apraxia of speech, expressive and receptive language delays associated with developmental delays, Down Syndrome, hearing impairment, and pragmatic language difficulties associated with Autism Spectrum Disorders and Asperger's Syndrome, among others. The SRF provided funding for 48 of the 104 children seen at CSRC for individual and small group therapy.

In response to our community's need, we added social skills groups for children four to six years old, diagnosed with autism. We began with two groups in the summer and fall, and have recently expanded to four groups. Our "Making Friends" group addresses turn-taking through playing games, initiating play, playing beside and joining in physical play with other children, and asking and answering questions within a group. "Super Friends" addresses verbally initiating play with one peer and a group of peers, asking and answering questions with peers, expanding length of conversational turns with peers, repairing communication breakdowns, and increasing complexity of pretend play with peers.

CSRC ran its first *Hanen – More Than Words*® program for parents of young children with autism this year. This program helps children communicate by providing intensive training for their parents or caregivers, since they spend the greatest amount of time with their children and have the greatest opportunity to help their children communicate. Given information and strategies, parents/caregivers have many more opportunities to improve their children's social communication skills than are possible through individual therapy delivered directly to the child. "*More Than Words*"® empowers parents to be their child's best therapist and advocate.

ACCOUNTABILITY

Children's Speech & Reading Center continues to participate in the statewide Scottish Rite Foundation accountability project by administering the Child Development Inventory (CDI). This "parent report" inventory provides information on the family's perception of their child's performance in the home environment.



SCOTTISH RITE FOUNDATION
2009 ANNUAL REPORT
CHILDREN'S SPEECH AND READING CENTER

This information is shared in a statewide survey to evidence the success of early intervention programs. Regular collaboration with teachers, childhood professionals and families is a part of all therapy programs. Keeping information relevant and coordinating efforts for maximum benefit are a vital part of our Guidelines for Ethical Practice (American Speech-Language and Hearing Association).

All therapists are certified by our national organization. We also participate in community forums designed to identify and problem-solve the needs of area families and children.

In keeping with our mission, we continually measure how our services are impacting the community and respond to needs with development of innovative programs and funding. At the individual level, each child's baseline skills are assessed and used to set short- / long-term goals for the therapy program. Six-month treatment plans are developed and monitored in accordance with the child's progress toward goals. Assessment is conducted at these intervals with specific measurement of success toward goals. Progress is measured by both functional gains and standardized measures. The family is included in development of individualized goal setting.

Every six months, families respond to a Satisfaction Survey by answering questions about quality of service and child's progress. Once again, this year, families have given the Center a 95% approval rating. Regular interaction with parents reveals that children have increased confidence and desire to participate in communication and reading activities at home and in school.

LEADERSHIP

The Scottish Rite Appraisal Committee for Northern Colorado meets monthly to review applications for funding at Children's Speech & Reading Center and the University of Northern Colorado. Bob Gregory and Wayne Davis currently represent the Scottish Rite Foundation on our Northern Colorado Appraisal Committee.

A continued focus this year has been on increasing collaboration with other community service providers to strengthen resources for area families. Attendance and involvement with various groups of youth-related service providers, including Healthier Communities Coalition, Caring and Sharing, Shared Alliance for Youth, and Parent Education Network, has helped bridge the gap in services experienced by many families in Northern Colorado. We also coordinate a local pediatric professional network group, which includes SLPs, OT's, an Educational Psychologist, Social Worker, Reading Specialist, Optometrist, Psychiatrist, and Clinical Psychologist.

Children's Speech & Reading Center has presented at 10 community events, including parent groups, childcare provider association meetings, Early Childhood Council of Larimer County, Autism Society of Larimer County, a local radio show, and local service clubs, regarding speech and language

SCOTTISH RITE FOUNDATION
2009 ANNUAL REPORT
CHILDREN'S SPEECH AND READING CENTER

development from birth to age five, signs of delay, what the CSRC is doing to help serve the communities in Northern Colorado, and how the SRF helps support our mission.

We had the opportunity to host two live workshops and two teleconferences this year, making continuing education easily accessible to speech-language pathologists in Northern Colorado.

We hosted a two-day workshop on autism, presented by Dr. Rydell from the Rocky Mountain Autism Center, and *Hanen – More Than Words®*. We were also able to use Poudre Valley Hospital to tele-link to two conferences presented live from The Children's Hospital – Denver.

CSRC is fortunate to have an experienced, committed staff of five speech-language pathologists, a full-time office assistant, a part-time bookkeeper, and a dedicated Board of Directors. Our SLPs bring many years of experience from their diverse backgrounds in a variety of settings. They have participated in workshops and conferences this year to increase skills in the areas of reading disorders, Autism Spectrum Disorders, Asperger's Syndrome, neuroscience, parent training (*Hanen – More Than Words®*), augmentative communication, and childhood apraxia of speech, cultural competency, and grant writing.

Elise Kormas, MA, CCC- SLP has served as Director since February, 2007. She graduated from the University of Buffalo in 1995, and has 15 years of experience in pediatric speech-language pathology, with special interest in early childhood development, literacy, and program development. She is a certified facilitator for the “*It Takes Two To Talk*”® Hanen Program and is trained in the Lindamood Phoneme Sequences program. Current duties include preparation of funding proposals, program development planning and organizing annual fund raising events community education, coordinating the SRF programs, therapy services, and managing staffing, budget and operations of the Center.

Karen Nystrom, MS, CCC-SLP brings a strong background in program development, public relations and childhood language / reading development to CSRC. She is active in the International Dyslexia Association and provides individual therapy to children with speech, language, and reading difficulties. Ms. Nystrom has been practicing since 1998.

Monica Weber, MA, CCC-SLP comes to us with a background in autism spectrum disorders, literacy, Down syndrome, language-learning disabilities, and cochlear implants. She has extensive experience in both public school and private settings and has worked on multi-disciplinary teams. She has extensive training in Sequential Oral Sensory Feeding Therapy. Ms. Weber received her Master's degree from the George Washington University in 2000.

LeAnn Sipple, MS, CCC-SLP comes to us with a strong background in pediatric feeding disorders, motor speech disorders, articulation and phonological disorders and language processing disorders. Her experience with augmentative-alternative communication evaluations and training is valuable in developing programs to support the high needs of some of the children we serve. She has advance

SCOTTISH RITE FOUNDATION
2009 ANNUAL REPORT
CHILDREN'S SPEECH AND READING CENTER

training in PROMPT and Sequential Oral Sensory Feeding Therapy. Ms. Sipple received her Master's degree from the University of Oregon in 1998.

Jessica Davis, MA, CCC-SLP provides screens, assessment and therapy for a wide variety of speech and language disorders. She also conducts early literacy groups at several preschools in our area. Ms. Davis graduated with a Master's degree from Indiana University in May of 2008.

Jessica Smith provides administrative support and coordinates client scheduling. She assists with fundraising efforts, program development, client intake, public relations, grant preparation, documentation, record keeping, and technology support.

Suzette Hettinger is CSRC's bookkeeper. She brings an accounting background to CSRC, with 18 years of previous accounting experience with a major oil company. She provides the Director with the necessary information to ensure viability of CSRC. Suzette provides budget analysis, documentation, payroll, and billing services. She assists the Director in grant preparation, financial record keeping, and program cost analysis.

ACKNOWLEDGEMENT

The state of Colorado is extremely fortunate to have RiteCare centers in their communities. The Scottish Rite Foundation's financial support has made a tremendous difference for our families, who otherwise would not have been able to afford therapy services. SRF Executive Secretary, Vernon Ingraham and Dr. Deborah Hayes have been a great support in coordinating the Foundation's goals with communities around our state. We appreciate their strong commitment to Colorado's programs and their ongoing guidance for our community-based services in Northern Colorado. The Foundation has an amazing impact on children and families across our state and the nation!

Community awareness and education have been an ongoing focus for CSRC. Children's Speech & Reading Center participated in a total of 10 events in 2009. These events helped inform the local communities about speech and language disorders, the Scottish Rite Foundation's philanthropy, and the work being done by the CSRC to address the challenges faced by children with communication disorders.

In 2009, CSRC sent four newsletters to over 250 families, supporters, physicians and friends of the Center. The newsletters highlight CSRC's programs and give us a chance to continually recognize our supporters.

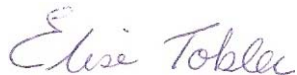
SCOTTISH RITE FOUNDATION
2009 ANNUAL REPORT
CHILDREN'S SPEECH AND READING CENTER

Goals for 2010:

1. Complete at least one *Hanen – More Than Words* parent education program.
2. Complete 175 free screens.
3. Provide individual and group speech, language, and literacy therapy services to 250 children.
4. Expand services to children on the Autism spectrum; establish a social skills group for school-aged children.

We are very grateful to the Scottish Rite Foundation of Colorado for their annual support and matching funds; we couldn't do what we do without your help! We appreciate the Foundation's commitment to the families and children of Northern Colorado and look forward to this continuing partnership.

Respectfully submitted,



Elise Tobler, MA, CCC-SLP
Scottish Rite Program Director



**SCOTTISH RITE FOUNDATION
2009 ANNUAL REPORT
UNIVERSITY OF COLORADO – BOULDER**

The University of Colorado - Boulder (CU-B), Department of Speech, Language, and Hearing Sciences clinical program (SLHC) provides services for children with communication challenges in the areas of speech, language, and hearing. Significant financial support for these services is provided by the Scottish Rite Foundation of Colorado (SRF). The SLHC’s focus is to identify and serve young children and their families in Boulder and surrounding communities who may not otherwise receive speech and language therapy due to a lack of funding for therapy services. The SLHC continues to provide evidence-based service to children with communication challenges and will use Scottish Rite funding to expand, as feasible, services to young children identified with autism spectrum disorders (ASD) through the *Story of Friendship* and *Space Camp* summer programs offered by the SLHC and hosted by a Boulder Valley School District school, Creekside Elementary. We also have initiated a parent education and support programs for children born with Down syndrome called *Early Circles*. We plan to expand this program in the future. In addition, the CU SLHC, including the Child Language Center (CLC) programs, provides the opportunity for graduate students to provide high quality services through clinical education opportunities during their entire academic program.

STATISTICAL SUMMARY for 2009

As shown in the table below, in 2009, Scottish Rite Foundation support helped 51 children receive services through the University of Colorado - Boulder. Thirty-one children received individual services and 10 children were seen in *Story of Friendship* each semester. An additional 10 children including peers participated in an intensive summer camp program through *Space Camp* program conducted during the summer semester. Funding also enabled children and their family to participate in a newly initiated parent education and support program called *Early Circles*. Services were provided on-campus at the Speech, Language, Hearing Sciences Department and at Creekside Elementary or Parenting Place in Boulder. Fewer children were seen in 2009 than 2008, due, in part, to increased financial need of applicants receiving individual services.

Program	# Children Served	Scottish Rite Foundation Contribution	Average Cost per Child
Individual therapy; Story of Friendship	41	\$21,481	\$ 524
Space Camp	10	\$4,000 (matching grant)	\$ 400
TOTAL	51	\$25,481	\$500

To serve these 51 children, the Scottish Rite Foundation provided \$25,481, a service grant of \$21,481 and a matching grant of \$4,000. The average cost per child for all programs at University of Colorado – Boulder was \$500.



Other Activities

The SLHC RiteCare Program welcomed Deborah Hayes, Vernon Ingraham, Valerie Hernandez and Paul Whannel for a special visit this year. Visitors observed the toddler group in action followed by a tour of SLHC research labs, classrooms, and clinical facilities. They also enjoyed the premiere viewing of a newly developed DVD that captures the mission, goals and vision of the Speech, Language, Hearing Sciences Department.

The 2009, *Dwight A. Hamilton Scottish Rite Foundation Graduate Student Scholarship in Speech-Language Pathology* recipients from the University of Colorado, Boulder, were Ms. Megan Fitzgerald and Ms. Kimberly Turner. They received scholarship awards of \$ 5000 each that enabled them to complete their graduate studies and continue their plans to provide services to children with communication challenges in the state of Colorado after graduation.

The reception dinner and celebration for students receiving the *Dwight A. Hamilton Scottish Rite Foundation Graduate Student Scholarship in Speech-Language Pathology* also provided students, family and faculty attending an opportunity to learn more about the Scottish Rite Foundation mission and purposes. Graduate students and faculty in the Department of SLHS who are involved in the National Student Speech Language Hearing Association appreciated the opportunity to participate in the Scottish Rite Holiday Party with families from the Center.

As Director of the Scottish Rite Program at CU, Susan Moore shared information about the SRF activities at a spring meeting of the Early Childhood Advisory Board meeting of Boulder County, announcing the availability of funding for summer programs.

It was exciting to enter the annual SRF program calendar competition this year, especially as the photo submitted of CLC preschooler Katie Garrison and her parents was selected the winner of the calendar cover. We are appreciative to Katie and her family as well as Deborah Hayes, PhD, Kelley Family/Schlessman Family Scottish Rite Masons Chair in Childhood Language Disorders for this award of \$1,000 dollars to our RiteCare program. This support will be used to replenish our children's books and materials in CLC programs.

PROGRAM DESCRIPTION

Children identified with speech, language, and/or hearing needs receive speech-language therapy services delivered by advanced graduate clinicians under the supervision of a CCC, certified clinical faculty member from the University of Colorado's SLHC programs. Intervention programs are provided individually to children once or twice weekly, in small groups, and/or through the CLC's toddler and preschool programs throughout the University of Colorado's academic calendar year in 16 week semesters. Parent education and support programs are integral to the center's work with families. Graduate scholars use evidence-based practices to facilitate children's communication skills and increase parental understanding and involvement as an integral part of their graduate studies and pre-professional education.

THE SCOTTISH RITE FOUNDATION
2009 ANNUAL REPORT
UNIVERSITY OF COLORADO – BOULDER

The center programs are unique in that the focal mission is the development of clinical competencies in graduate students through delivery of state of the art, high quality services to young children and their families.

We are especially appreciative of the SRF continued support for the innovative program, *Story of Friendship* which has evolved into a community-based program, housed at Creekside Elementary School in Boulder Valley School District as well as the *Space Camp* program offered summers 2008 and 2009 for children identified with Asperger's Syndrome and their friends. These programs are focused on the specific language, communication, and language learning needs of children identified with ASD in the natural context of their school environment or an intensive summer program and all programs incorporate peers as friends to address social communicative challenges. We also appreciate the stability offered through the funding provided to parents who could otherwise not participate in our other CLC programs and services in a time of great financial need. This funding also allows the RiteCare program at SLHC opportunities to develop and implement innovative programs such as *Early Circles*. This program initiated in 2009 is based upon evidence-based practices that facilitate family education and involvement in promoting their children's early language growth and development through daily activities and routines at home.

ACCOUNTABILITY

The Center ensures that each child receiving speech-language intervention services makes progress on a semester basis. Prior to each semester, each child receives a pre-therapy file review, assessments are completed as needed, and goals and objectives are developed in consultation with the child's family. Progress is monitored and documented routinely and a detailed progress report and/or "portfolio" of growth and progress based upon actual "artifacts" completed by the child are shared with the family at the end of each semester. The Center also routinely collects and reports data contributing to the SRF database regarding children's progress and outcomes, this documenting the effectiveness of services to this population of preschool children receiving services through the CLC.

Professional relationships were maintained in 2009 with Boulder Valley School District, Imagine, Boulder County Early Childhood Advisory Council and numerous agencies and hospitals in the area. The successful collaborative efforts between the University of Colorado and the local public schools and other agencies help to promote the availability of SRF funding in these communities. In addition, these individuals provided valuable insight into the needs of the families who are appropriate for services.

The participation of graduate scholars to provide services to children enables these future professionals to develop skills necessary to become leaders in their own communities. Clinical faculty provide detailed feedback to graduate students during their clinical sessions and evaluate their clinical competencies through videotape analysis, direct observation, and cumulative professional growth planning during each semester.

THE SCOTTISH RITE FOUNDATION
2009 ANNUAL REPORT
UNIVERSITY OF COLORADO – BOULDER

By educating the graduate clinicians about the SRF and the RiteCare program and community service in general, it increases the likelihood that these students will be comfortable in similar roles in the future.

ACKNOWLEDGEMENT

The Scottish Rite Foundation has significantly improved the opportunities of many children and their families in the Boulder area and also contributes to the quality of clinical education opportunities for future professionals in Colorado during very difficult financial times. It is so very important that clinics extend language intervention services to families who do not have the financial access to services.

Program Goals for 2010:

1. Continuation of services to children in the Boulder area and surrounding communities with funds allocated from the SRF in 2010.
2. Continuation of efforts to make known the availability of services funded through the SRF. Contact with school-based speech-language pathologists and other agencies will make it known to the community that these supports are available to our most vulnerable children with challenges and their families.
3. Explore the feasibility of expansion of services to include communities within the Boulder Valley and St. Vrain School Districts and surrounding communities, including nearby rural mountain areas to increase numbers of children and families who are eligible to benefit from SRF funding given 2010 funding allocations. We would especially like to expand our program to include a *More Than Words Workshop* for parents of children identified as ASD. Ms. Amy Thrasher, MA, CCC-SLP Clinical Assistant Professor, is a certified Hanen Centre Instructor and acquired certification as a *More Than Words* instructor in Spring 2009.
4. Plan and develop another tour of our Center with a media presentation of our research programs, academic and clinical education programs, and services, to provide an opportunity for SRF Partners in our area to meet our families who have or who are currently receiving services through support from the SRF.
5. Continue to seek media coverage and continued distribution of the application process for the scholarship program to increase awareness of our partnership with the SRF. We will continue to highlight our SRF activities through announcements on our website, www.colorado.edu/slhs, in university reports, accreditation reports and through other fundraising campaigns, and grant applications for collaborative support of SLHC programs.
6. Reschedule Mr. Vernon Ingraham and his presentation to graduate candidates to better inform them of the history and current activities of the Scottish Rite's philanthropy. As well as sharing current opportunities to apply for the *Dwight A. Hamilton Scottish Rite Foundation Graduate*

THE SCOTTISH RITE FOUNDATION
2009 ANNUAL REPORT
UNIVERSITY OF COLORADO – BOULDER

Student Scholarship in Speech-Language Pathology program through the SRF. A previously scheduled presentation had to be cancelled because of weather.

7. Susan Moore submitted a poster presentation and plans to participate in the 2010 RiteCare Conference in New Orleans, with generous travel support again from the Kelley Family/Schlessman Family Scottish Rite Masons Chair in Childhood Language Disorders.

Respectfully submitted,

Susan M Moore

Susan M. Moore, Clinical Professor
Director of Clinical Education & Services
Director, RiteCare Program, SLHC at the University of Colorado, Boulder
SM/kp

SCOTTISH RITE FOUNDATION 2009 ANNUAL REPORT MEMORIAL HOSPITAL – COLORADO SPRINGS

STATISTICAL SUMMARY

Memorial Hospital Pediatric Rehabilitation Services is located in the Printers Park Medical Plaza building, approximately one mile from Memorial Hospital Central. Fourteen speech-language pathologists, 11 physical therapists, 17 occupational therapists, and two audiologists staff the facility. Support staff includes: a rehabilitation technician, an office supervisor, and a case manager. An outpatient manager supervises the staff. Two coordinators provide support for management. In addition, two developmental pediatric physicians participate in the specialty clinics.

Our facility is committed to serving children in locations convenient to families. Currently we are providing services at the main facility, Printer's Park Medical Plaza, located in central Colorado Springs, and the Powers site, located in east Colorado Springs. Beginning this year services have also been offered on the north end of Colorado Springs, at the new Briargate clinic located near the North Hospital campus.

As shown in the table below, in 2009, we provided speech-language services to 50 children funded by the Scottish Rite Foundation Grant. The cost of these services was \$120,906 with an average annual cost per child at \$2,418.

Program	# of Children Served	Scottish Rite Foundation Contribution	Average Cost per Child
Individual or group therapy	50	\$120,906	\$2,418

The Speech Department completes on average seven to eight speech-language assessments and provides outpatient individual speech/language therapy to 350 patients per week in both individual and group sessions. In addition, the department also provides four Feeding Clinic Assessments, nine-to-ten Modified Barium Swallow Studies, one Alternative and Augmentative Communication Assessment, and two Autism Clinic Assessments per week. We serve a variety of diagnoses for children ranging in age from zero to 21 years.

PROGRAM DESCRIPTION

The department continues to be dedicated to the Autism Clinic, Cleft Palate Clinic, Feeding Clinic, Infant Developmental Assessment Clinic and Rehabilitation Clinic to serve children with specific or medically related concerns. Our program has expanded services in other areas by increasing support for the community with weekly scheduled support for Modified Barium Swallow Studies.

In June 2009, speech and language therapy summer groups were initiated to meet the needs of children receiving services from the school district who would benefit from extended services through the summer months. There were four, eight-week groups scheduled to meet the needs of over 17 children.

To enhance acknowledgement of the services provided by Memorial Pediatric Rehabilitation Services, two free Speech and Hearing Screenings were offered to the community in 2009. One screening was held at the Printers Park Medical Plaza site and the additional screening was held at Mr. Biggs, a local amusement facility.

A majority of the staff was able to benefit by attending a course put on by the Developmental Inpatient Team. The course instructor, Catherine Shaker, MS/CCC-SLP, BRS-S is well known for her expertise in swallowing disorders. The title of the course was “Feeding and Swallowing in the NICU and Early Intervention.” Additional training on augmentative communication devices were also offered to the staff and the community organized by our own Autumn Hayes-Diges, MS/CCC-SLP.

The much anticipated annual Harvest Fest and a day with Santa Claus were organized for the children. Both these annual events provide much fun for the families every October and December. We are grateful to Jim Stivers who returns each year as Santa. Jim is a great friend who served on the Scottish Rite Appraisal Committee and continues to support this great event.

ACCOUNTABILITY

Memorial Hospital Pediatric Rehabilitation Services continues to participate in the statewide Scottish Rite Foundation Accountability Project. A Child Development Inventory (CDI) for all children between the ages of zero to five years is completed. In 2009, approximately 34 CDIs were collected and submitted to Martha Drake to be included in the statistical analysis for Colorado RiteCare programs.

A hospital-wide accountability tool using surveys to monitor patient satisfaction enables each department to obtain feedback in a number of areas related to patient care. Memorial Health System’s goal is to obtain a hospital wide score of 90.5 %. The Pediatric Rehabilitation Department obtained a score of 86.15%. Challenges for the department have been a crowded waiting area and waiting lists for scheduling treatment. It has also been difficult to meet families’ needs for late afternoon times. It will be a goal to address some of these challenges in the upcoming year.

Standard procedures at our facility also include an initial baseline evaluation and biannual and/or annual re-evaluation data. Long-term goals are updated every six to 12 months, and short-term goals are updated continuously.

LEADERSHIP

The Pediatric Rehabilitation Department is fortunate to have 14 committed speech/language therapists that have come to this facility with a variety of backgrounds from clinics, hospitals, school programs and universities. The staff is composed of therapists with experience ranging from 1.5 years to 17.5 years, with an average of 4.75 years experience. We are fully staffed in the speech-language pathology department. We also have welcomed a new Director of Rehabilitation, Joseph Foecking.

SCOTTISH RITE FOUNDATION
2009 ANNUAL REPORT
MEMORIAL HOSPITAL – COLORADO SPRINGS

We are also excited to welcome a new Co-Director for the Scottish Rite Foundation at our facility, Ericka Wendorf, M.S., CCC-SLP.

In 2009, our Appraisal Committee members, Tom Holmes, R. Wayne McAllister and Robert Herd, met monthly to process Scottish Rite applications. This committee has demonstrated great dedication to the children at this facility.

We said goodbye to Tom Holmes this past December as his three-year term came to a closing. Tom has demonstrated commitment to the appraisal committee and compassion for the children we serve. We are grateful for his service to the community through the Scottish Rite Foundation. We welcome Billy Sypher, who has joined the Appraisal Committee this January, 2010.

ACKNOWLEDGEMENT

We continue to be thankful to be a part of the Scottish Rite Foundation and want to express our gratitude for the opportunity to assist families in the Colorado Springs area. It is a pleasure to serve the Scottish Rite Foundation and we are grateful to work with dedicated leaders, Deborah Hayes, PhD., Vernon B. Ingraham and Valerie Hernandez.

Respectfully Submitted by,

Debra L. Blythe, MA, CCC-SLP, Scottish Rite Program Co-Director
Cara Hofeldt, M.S., CCC-SLP, Scottish Rite Program Co-Director
Memorial Hospital Pediatric Rehabilitation Services on January 22, 2010

MONTROSE MEMORIAL HOSPITAL

SCOTTISH RITE FOUNDATION

2009 ANNUAL REPORT

Montrose Memorial Hospital (MMH) is proud of the connection that has been established with Scottish Rite Masons. We are pleased with the involvement of our Masonic Appraisal Committee and the Masonic commitment to the children of the communities in Montrose and the surrounding counties of Pitkin, Ridgway, Ouray, Delta, and San Miguel. We take our connection seriously as we strive to provide the best possible speech-language-hearing-literacy services.

STATISTICAL SUMMARY

As shown in the table below, we have provided speech-language therapy services to 62 children this year. The cost of these services totaled \$113,441 which was an average cost of \$1,830 per child.

Program	# Children Served	Scottish Rite Foundation Contribution	Average Cost per Child
Individual or group therapy	62	\$113,441	\$1,830

Since the inception of our RiteCare partnership in 1998, we have enrolled 427 children with total grant assistance of \$866,141.

We provide the majority of speech-language-hearing-literacy therapy at the Pediatric Rehabilitation Clinic at MMH. We have a Speech Clinic in Delta for families in Delta County, and in Ridgway for families in Ouray and San Miguel Counties. Families from Pitkin County drive to Montrose for services.

PROGRAM DESCRIPTION

We provide outpatient speech-language-hearing-literacy to children in a family- friendly building separate from the main hospital building. All of our Speech-Language Pathologist's (SLP's) have received the Certificate of Clinical Competence from the American Speech-Language Association (ASHA). Our RiteCare focus is with pre-school children. Children are seen individually, in pairs or small groups based on the needs of the child. Per parent request, we consult with the pre-schools and the school districts for program development and carry-over with their children.

We also assist with the transition from the hospital-based program to the community programs. Family education for carryover of learned skills is a major focus. In addition, we provide multiple opportunities for the families to interact with each other and the Masons.

For programs and activities calendar for 2009 (see attached Appendix)

ACCOUNTABILITY

To ensure that our services are consistent with community expectations we remain accountable to 1) the administration and physicians of MMH, 2) families and children that receive services from our programs, 3) collaboration with other agencies that serve the pediatric population and, 4) Scottish Rite Masons.

The Speech-Language Pathologists regularly contact physicians with reports, letters and phone calls regarding the children being served. We organize and conduct twice monthly meetings with our pediatric occupational therapists, physical therapists and the physician assistant from the pediatric office regarding the children we serve. These collaborative meetings give us the opportunity to team on each child and their unique needs. Our hospital administration continues to be very supportive. They are kept apprised of our current RiteCare programs and activities through regular updates via e-mails, the RiteView newsletter and monthly supervisor meetings.

We continue to track progress on each child treated in the Speech-Language Clinic from their initial evaluation to their discharge from therapy. All children enter our program through a referral from their physician. Our RiteCare children enter our program with formal evaluations and reports from Child Find, the school district, or another hospital/clinic setting. Goals and objectives are designed on an individual basis with input from parents or guardians. Goals are written for six months and are revised as needed. Parents are encouraged to report on their child's speech and language progress at home and in the community.

Documentation with percentiles and notes are written at every session, with a monthly summarization noting the child's progress and stating the plan for the upcoming month. A progress report is written every six to nine months, which is then shared with the family, physician, and others per family request. New goals are then discussed and written with the parents. All of the child's progress notes, goals, evaluations and reports are kept in a confidential chart according to HIPPA regulations. Documentation is governed by the guidelines established by JCAHO, which is the accrediting agency for hospitals. Our rehabilitation department is in the process of transitioning to electronic medical records. This is an ongoing opportunity and challenge.

Our SLPs are available to consult and meet with members of the medical community and other agencies per family request. We are available to meet with the school district personnel in developing a child's school based program. We have worked with the department of public health to establish programs to meet the needs of our children and families.

The Child Development Inventory (CDI) continues to be administered to children receiving speech-language services at our clinic. This is the statewide standardized assessment tool used by all the RiteCare programs. Data is submitted to Martha Drake, RiteCare director at Pueblo, to compile with the data from all the RiteCare Clinics. The questionnaire is completed by the parents. It is given to children entering the program, is re-administered at six months intervals and when the child is discharged from therapy.

SCOTTISH RITE FOUNDATION
2009 ANNUAL REPORT
MONTROSE MEMORIAL HOSPITAL

We are accountable to our local Masons through our monthly Appraisal Committee meeting breakfast. Our hospital graciously provides a tasty and nutritious meal for this event. Tom Cox, Paul McCabe, Jack Ward, and Otsie Stowell have served this year, representing each of the counties in which we provide services. We are pleased to have their commitment to children with speech and language disorders.

LEADERSHIP

The Speech-Language Clinic at MMH employed eight certified Speech-Language Pathologists in 2009. All are members of the American Speech-Language-Hearing Association.

Our clinicians included:

Jeneine Stevenson M.S., CCC-SLP is co-director of the RiteCare program and director of the Speech-Language Department at MMH. She has extensive experience in oral-motor and speech disorders as well as language development.

Patti Anderson CCC-SLP is co-director of the RiteCare program at MMH. She brings extensive pediatric speech-language experience to our program. Her expertise includes language therapy, cochlear implants, hard of hearing, and augmentative therapy.

Christi Merritt M.S., CCC-SLP has extensive pre-school experience in providing evaluation and treatment to children. She provides speech and language therapy both in our Montrose and Delta locations.

Melody Searle B.A., M.S. is our literacy teacher. She previously taught for thirty years in the primary grades and also taught English is a Second Language. Her focus is beginning reading and reading comprehension skills to the pre-k and kindergarten kiddos.

Linda Daguerre M.A., CCC-SLP works full-time with the local school district and provides after school and summer treatment at MMH. She is trilingual in English, Spanish and French. She provides therapy for our children who speak Spanish and interprets for us with our parents that only speak Spanish.

Leslie Herr M.S., CCC-SLP works PRN when her specific skills are needed. She has been associated with the Montrose community. She loves working with our children on their AAC devices.

Micah Magee M.S., CCC-SLP has provided treatment to children who are hard of hearing.

Koleen Telecky M.S., CCC-SLP specializes in the "Speech Sciences".

ACKNOWLEDGEMENT

Our RiteCare program is successful because of the commitment and teamwork of the Masons, MMH, and the Speech-Language Pathologists in our department.



SCOTTISH RITE FOUNDATION
2009 ANNUAL REPORT
MONTROSE MEMORIAL HOSPITAL

The Scottish Rite grant affords us the ability to offer a program of excellence to our communities. We are grateful to the Colorado Scottish Rite Foundation and the Masonic Fraternity for their continuing leadership, guidance and financial support. We also wish to thank Dr. Deborah Hayes for her guidance, leadership and support through The Children's Hospital (TCH) and the outreach clinics. Because of the benevolence of the Scottish Rite Masons, we were able to provide new programs in 2009.

In looking forward to 2010 we recognize that the economy continues to affect the RiteCare programs as well as the individual finances of our families. Our commitment is to continue with our wide range of speech-language therapy treatments while maintaining fiscal responsibility.

Our goals for 2010 include:

1. We will be moving into a remodeled Pediatric Therapy building. This will provide our families the opportunity to receive speech-language therapy, physical therapy and occupational therapy in a pediatric center.
2. Increasing our collaboration with TCH in the areas of cochlear implants/hearing impairments; autism; and literacy.
3. Hosting additional teleconferences with TCH and Colorado Speech and Hearing Association.
4. Providing speech and language summer sessions in Delta to the school aged children. This will depend on availability of additional summer staffing and funds.
5. Attending the Rite Care directors meeting in New Orleans
6. Hosting opportunities for our families and community to meet the Scottish Rite Masons through:
 - a. An Art Show of our kiddos creative endeavors
 - b. Summer "Picnic in the Park" as a meet and greet
 - c. "Lunch and Learn" for community education in the fall
 - d. Christmas breakfast with the Masons, Shriner Clowns and Santa.

Respectfully submitted by:

R. Jeneine Stevenson, M.S. CCC-SLP Patti Anderson, CCC-SLP
Co-directors RiteCare Childhood Language Program
Montrose Memorial Hospital

APPENDIX

Calendar of Programs and Activities for 2009:

We were pleased to attend our annual Scottish Rite Luncheon at The Children's Hospital-Colorado (TCH). Allowing us the opportunity to network with other program directors, visit with the Scottish Rite Masons and get to know the TCH staff better was a great way to start the year.

In March we began our new literacy program under the direction of Melody Searle. The focus population is children who are at risk for reading problems because of phonological deficits.

This program has been well received. A total of eleven children have received services in 2009, with five children who have graduated from the program and are having success in the schools.

The RiteCare program was represented at the Annual Health Fair sponsored by MMH on March 7. Jeneine, Patti, Christi and Koleen answered questions from parents and grandparents concerning speech and language development. Brochures were distributed describing the RiteCare services available through MMH.

April 8 saw the Appraisal Committee and the SLPs welcoming and educating our new hospital CEO, David Hample, as well as the rest of administration, at a special luncheon about the RiteCare program and the Masonic organization.

MMH Rehabilitation moved into a new office in Ridgway with an Open House on April 21. Both Jeneine and Patti were present to greet community members and answer their questions about speech-language therapy. The Daily Press editor's and Jeneine's conversation about stuttering was noted in the Montrose newspaper the next day.

On April 25 we were a host teleconference site for the Annual Conference on Language & Learning. The topic was "Understanding, Assessing, and Treating Communication Challenges in Youth with Developmental Disabilities, emphasizing Fragile X Syndrome". We had SLPs from Montrose, Delta, Cortez, and Rico in attendance. This collaborative effort with TCH was a benefit to all in attendance. Positive comments were made about this outreach and the SLPs are looking forward to the teleconference in 2010!

On April 29 we tried something new. Jeneine and Patti provided the SLPs from the Montrose School District RE-1J with desserts as we presented information about our Rite Care summer program.

Patti was pleased to be able to represent our clinic at the Masonic banquet in Grand Junction on May 3, where Otsie Stowell, a beloved Appraisal Committee member, was awarded the Distinguished Service Award from the Scottish Rite.

On May 22 we had a special luncheon with our Appraisal Committee members and all of the speech staff to discuss current programs and dreams for the future.

Our summer program "Traveling Around the World" was an eleven-week tour. We had a total of 127 children with 40 on the RiteCare grant program. Each child had a passport that was stamped with an animal or activity representative of that country. Each week we "visited" a new country experiencing the stories and music, tasting the foods, and making the crafts. Two of our travels are highlighted in the 2010 RiteCare calendar –

SCOTTISH RITE FOUNDATION
2009 ANNUAL REPORT
MONTROSE MEMORIAL HOSPITAL

January and May. Unfortunately, due to staff restrictions a separate summer program was not provided at the Delta or Ridgway clinic; these children came to Montrose.

This summer our Scottish Rite Masons sponsored “Summer Family Fun BBQ”. This was held mid-week after work, on June 17. Families and siblings were invited to come to the park to meet the Masons and their families, enjoy hot dogs and hamburgers and interact with other families in attendance. This was a huge success! Our Scottish Rite Masons look forward to hosting this activity again on a warm summer evening in 2010.

On August 6 Dr. Deborah Hayes, Ph.D. and Valerie Hernandez made their yearly trip to visit with our staff and RiteCare Appraisal committee. We had the opportunity to showcase our program, ask questions of the Chair, and plan for the rest of the year.

We had our Autumn Celebration on October 12. Our focus was “All Things Apple”. The children listened to a story about an apple orchard; made art work using stamped sliced apples in paint and on to paper; and made caramel apples.

The first RiteCare Directors meeting via teleconference was held on October 22. We had the opportunity to travel to Grand Junction to ‘meet’ with the other directors throughout the state. It was an educational time as we each learned about the great RiteCare programs that are taking place throughout the state.

The CSHA conference on November 9 was teleconferenced to Montrose. The topic was “Neurologically Speaking: Applying advances in Brain Science to Intervention with Struggling Students”. We again had SLPs from throughout the western slope in attendance.

In December we held our “Breakfast with Santa” on a week-end morning at the Masonic Lodge. Our Scottish Rite Masons cooked pancakes and sausage while the Shriner Clowns entertained with magic tricks and balloon animals. We had an amazing turnout of our RiteCare children and their parents, siblings and grandparents! Each family received a private unrushed ‘audience’ with Santa and a family picture. We thank the Masons for sponsoring the books that each child received from Santa. We continue to encourage the importance of having story time at home with their children.

Our last big events were the RiteCare “Winter Language and Literacy Camp” (WL&L camp) and an AAC camp. The WL&L camp was a four-hour adventure for our children during the school break between Christmas and New Year’s Day. We held the camp to provide our children the opportunity to combine language and literacy skills in one program. “The Mitten” and “Building a Snowman” were the books we used for the groups. Along with reading the books, we acted out the stories and participated in sensory activities based on the themes of the books. The children worked on combining sounds into words. It was a great success for the children and therapists involved. The AAC camp provided the children an opportunity to practice using their assistive device in a non-school environment.

We were again privileged to have Dr. Tracy Kovach from TCH help us with Augmentative Clinics in 2009. She came to MMH on Jan 16, May 22, and September 18. Dr. Kovach evaluated children, provided recommendations, and trained our local Speech, P.T., and O.T. staff, parents and school personnel. This outreach to our community is valued and the families and staff look forward to the information and education that Dr. Kovach provides at each of the Clinics.



SCOTTISH RITE FOUNDATION 2009 ANNUAL REPORT THE PINON PROJECT TREASURE CHEST PROGRAM – CORTEZ

During the first half of the 2009/2010 program year our efforts to grow and improve the quality of The Treasure Chest Program are paying off. We have a greater number of families than ever before signed up for the program. Families are participating on a more thorough and consistent basis. The quality of our program has been noticed by direct care providers and directors in the child development centers served. The extra effort that we have made in training and orientation of child care providers has resulted in an increased support from them in tub distribution. Currently, 178 families are being served by our program.

Distribution Breakdown:

Cortez Library – 19 (15 preschoolers, 1 infant and 3 toddlers)
Mancos Head Start – 12 preschoolers
Dove Creek Jumpstart – 18 preschoolers
Dove's Nest – 6 (2 preschoolers, 2 infants and 2 toddlers)
TreeHouse – 40 (24 preschoolers, 3 infants and 13 toddlers)
Teddy Bear Preschool – 25 preschoolers
Ute Mountain Ute Child Development Center – 58 (40 preschoolers, 2 infants and 16 toddlers)

TOTAL Children enrolled:	178
TOTAL Scottish Rite Foundation contribution:	\$53,520
TOTAL cost per child:	\$301

Success and Goals Achieved:

- In previous years we have struggled to maintain a substantial level of meaningful participation from families with children at the Ute Mountain Ute Child Development Center. We also had difficulty preventing the loss of materials. Thanks to the recent commitment and dedication of the entire Ute Mountain staff, we have made significant progress. We were able to provide a three-hour training for teaching staff that not only included Treasure Chest Program orientation but training regarding ways to support children's literacy, developmental principles around literacy and the significance of parental involvement. This was well received, and teacher/caregiver involvement in program delivery has increased dramatically. The outcome has been that families who sign up are continuing to participate, materials are coming back well used and in good shape with parent surveys completed. Those surveys reflect a high degree of enthusiasm for monthly participation.



SCOTTISH RITE FOUNDATION
2009 ANNUAL REPORT
THE PINON PROJECT
TREASURE CHEST PROGRAM – CORTEZ

- We now maintain Towaoc’s inventory separately at their site. We are grateful for their contribution of materials such as crayons, colored pencils, paper and use of their copier, facilitating our ability to maintain inventory on-site. We will be meeting with Towaoc staff in mid-January to assess our progress and make adjustments to program delivery as needed.
- Family involvement has significantly increased at the TreeHouse Child Development Center. Twice as many families initially signed up, and a much larger percentage of those are families of infants and toddlers (see distribution breakdown above). The dropout rate has decreased significantly. At the end of the program year, we will have an increase in the number of families from this center that have participated by checking out materials five or more times. We were able to provide a one-on-one orientation for teaching staff in September, and we are especially grateful to the direct service providers, the classroom teachers and the caregivers, for their ongoing promotion of the program. This has been the greatest factor in our success at the TreeHouse. Our ability to expand our inventory of engaging materials for infants and toddlers earlier in the year has made participation more interesting for families of our younger children.
- Due to the supplemental grants we received in 2009 along with matching grant monies from the Scottish Rite Foundation, we were able to focus our energy on creating a larger and more engaging inventory of infant/toddler bags. We were also able to create bags that were more developmentally specific to the wide developmental range within that age group. As a result, besides increased participation, monthly family surveys reflect a higher degree of satisfaction.
- Our goal to create more tubs with a larger variety of thematic choices has paid off. New choices, “Outer Space”, “Fun with Food,” and “When I Grow Up” are quite popular. Because we have so many choices, we now have several families that have participated through the Cortez Library for almost two years.
- This past year, we were able to provide our most meaningful measurement of outcomes to date, utilizing assessment information from programs that use The Creative Curriculum Assessment and Planning tool, as well as anecdotal feedback from participating families. While not all participant outcomes were accounted for, the sampling (both full participants and control group non-participants) was substantial enough to provide meaningful data. Due to the fact that the infant/toddler program at the TreeHouse is now also using the Creative Curriculum assessment and planning tool, we will be able to measure developmental outcomes for this age group for the first time in June of 2010.

Challenges:

- A substantial amount of material was lost last year, due to materials not being returned or coming back in very poor condition and needing to be replaced. Our supplemental grants

SCOTTISH RITE FOUNDATION
2009 ANNUAL REPORT
THE PINON PROJECT
TREASURE CHEST PROGRAM – CORTEZ

helped us to alleviate this loss. While some loss is to be expected, it cannot regularly be accommodated beyond a certain level. Much of our orientation with direct care providers has addressed the importance of emphasizing to families that tubs be returned and in reasonably good condition. So far, the result has been positive.

- While interest in the infant/toddler materials has increased, we have not been able to engage families at Southwest Open High School. Materials remain available for any interested families at The Cortez Library.

Current Goals:

- With the help of childcare staff at centers where materials are distributed, we are holding a tighter rein on inventory. We will initiate more formal recordkeeping with regards to inventory.
- We have expanded participation at both the TreeHouse and the Ute Mountain Ute Child Development Center. Our goal is to maintain an increased level of participation.
- In collaboration with the Fatherhood Program under the auspices of The Pinon Project, we will be interacting directly with fathers who are meeting once each week for mutual support. We will be facilitating direct enrollment and checkout of materials at this group's sessions every other week as we have done in the past for the Incredible Years parenting classes. We have developed chests specifically designed for fathers and their children. Because our program is about promoting healthy parent/child relationships through reading and one-on-one developmentally appropriate play, this collaboration is a perfect fit. This in turn promotes increased reading skills and other developmental gains.
- While we have increased our inventory of tubs for Spanish speaking families, we have not had requests for those materials this year. We will make sure they are available as the need arises.

To conclude, we cannot begin to thank you enough for your consistent and enthusiastic level of support for The Treasure Chest Family Literacy Program. It has become an established element of the educational environment in Montezuma and Dolores Counties. The program sends the message to all those who care for young children in our area that one of the greatest gifts one can give to a child is to read to him or her. Judging by the steady growth of family involvement that we continue to see each year, the message is being heard.

Kathi Sutton

Early Literacy Treasure Chest Coordinator

The Pinon Project



**SCOTTISH RITE FOUNDATION
2009 ANNUAL REPORT
ROCKY MOUNTAIN SER WESTERN SLOPE HEADSTART
TREASURE CHEST PROGRAM**

PROGRAM DESCRIPTION

The Treasure Chest Program is a home visitor based program providing education and training for children and their families (siblings and parents). The Treasure Chest Program provides early identification/intervention of children with possible developmental delays. The child's development is screened and reviewed with parents. Additionally, school readiness is supported through early learning within the home.

The Treasure Chest Tubs are composed of developmentally appropriate materials that help strengthen every child's growth and development. Each Treasure Chest contains activities that are based on a common theme and are rotated monthly.

Participation by the parents is an essential component of this program. The Early Literacy Coordinator will review the materials with the parents, once a month, during their scheduled home visits. The parents then guide their children through these activities.

STATISTICAL SUMMARY:

- Thirty six children, ages 3-5, are enrolled in the Treasure Chest Program. In addition, 21 siblings, ages 0-2 ½, use the Toddler Curriculum. The Toddler Curriculum consists of approximately five different themes and is also rotated once per month. The demand for the program is illustrated by the 40 enrolled children we have on the waiting list.
- Of the 36 children currently enrolled, 9 have Individualized Education Plan's (IEPs) with the schools and 5 have been assessed by Child Find and are being monitored.
- We have 7 Spanish-speaking families enrolled in the program.
- Twenty one siblings are being assessed using the Ages and Stages Questionnaire, (an assessment tool that monitors child development); two of these children are receiving services through Part-C (children with disabilities under the age of 3). The remaining children are continuously evaluated by the Head Start Program's Disabilities Manager.
- The 9 children who have IEPs will not be tested on the DIAL-3. A graph is attached showing the results for the remaining enrollees.
- Communication with Spanish speaking families continues to be a challenge this year. However, with assistance of the Family Service Workers and the Disabilities Manager, Rose Owens, these children have received the many benefits of the Treasure Chest Program.
- This year the Scottish Rite Foundation funded the Treasure Chest Program with \$28,000. This money paid for tub replenishment as well as the Early Literacy



SCOTTISH RITE FOUNDATION
 2009 ANNUAL REPORT
 ROCKY MOUNTAIN SER WESTERN SLOPE HEADSTART
 TREASURE CHEST PROGRAM

Coordinators salary. Rocky Mountain SER Western Slope Head Start continues to work with the community as we received \$3,000 from Target in additional funding for the Treasure Chest Program.

- Total cost per child: \$491

ACCOUNTABILITY:

The Dial 3 (Developmental Indicators for the Assessment of Learning) was used for the 2009/2010 school year to assess child development for 29 children who do not have IEPs (children with IEPs are being assessed by St. Mary’s Life Center Speech Language Department and the Mesa County School District #51 Child Find). Halfway through the program year, the data show that, in all areas measured, children enrolled in the Treasuer Chest Program exceed expected norms for child development.

01/20/2010

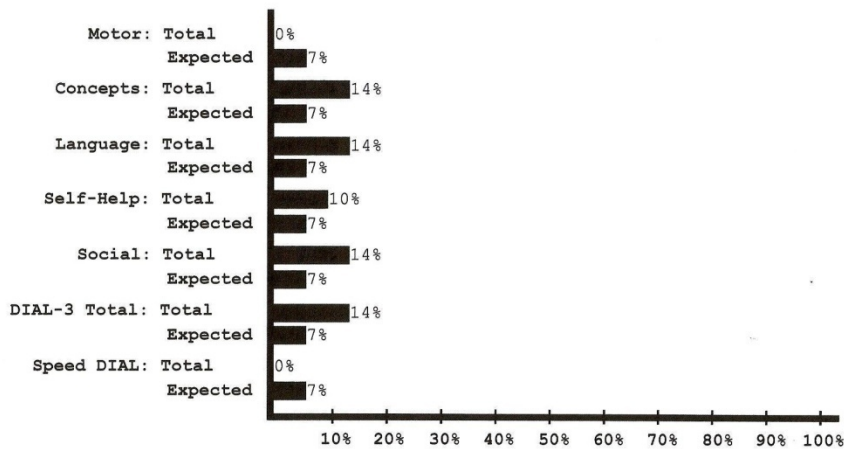
DIAL-3 ASSIST

Developmental Indicators for the Assessment of Learning-Third Edition

Group Summary

7% Cutoff

	Motor	Concepts	Language	Self Help	Social	DIAL-3 Total	Speed DIAL
Total Number Tested:	29	29	29	29	29	29	0
Total Potential Delay:	0	4	4	3	4	4	0
Total Percent Potential Delay:	0%	14%	14%	10%	14%	14%	0%



COPYRIGHT 1998, AMERICAN GUIDANCE SERVICE, INC., CIRCLE PINES, MN 55014-1796



SCOTTISH RITE FOUNDATION
2009 ANNUAL REPORT
ROCKY MOUNTAIN SER WESTERN SLOPE HEADSTART
TREASURE CHEST PROGRAM

LEADERSHIP:

Rose Owens, Disabilities and Mental Health Manager, has been working diligently with our school district trying to qualify more children so they can receive services for speech and language delays.

The Treasure Chest Program encourages our families who have children with speech and language delays to visit with Amy Brophy-Neilson, MSCCC-SLP with St. Mary's Life Center, to receive additional speech services.

I have encouraged parents to continue with their child's pre-school education as well as given direction on how to receive services through our community. I have also provided more tubs with greater diversity of themes due to the increase of interested families.

ACKNOWLEDGEMENT:

The success of the Treasure Chest Program is due to the continued interest, funding and support of the Scottish Rite Foundation. The families of the Rocky Mountain SER Western Slope Program, who are privileged to participate as a result of your support, thank you for this opportunity.

The Treasure Chest Program not only received monetary support from Scottish Rite this year but also received help from a member of the Masonic Temple. During the summer of 2007 a member from the temple recognized the need to fix several non-working light fixtures at our office building. The member fixed these light fixtures and their still working great today!

I have several goals for the remainder of the 2009/2010 school year. I plan on maintaining all existing tubs as well as adding different projects/themes when time and money permits. I would also like to continue to support the Toddler Curriculum as the parents and I have seen great gains, in their children, from their participation. I will also continue to seek funding through grants and agencies like Scottish Rite to ensure this beneficial program continues to thrive.

Thank you for your continued support. If you need any further information or have any questions, please don't hesitate to contact me at (970) 243-9318 or via e-mail at Carmen_marsh@hotmail.com.

Respectfully Submitted,

Carmen Marsh, Early Literacy Specialist
Rocky Mountain SER Western Slope Head Start
The Treasure Chest Program
835 N.26th St., Grand Junction, Colorado 81501