



## SCOTTISH RITE FOUNDATION OF COLORADO 2010 ANNUAL REPORT

### STATISTICAL SUMMARY

In 2010, the Scottish Rite Foundation (SRF) helped almost 400 children receive speech, language, learning, and/or parent education services at The Children’s Hospital (metropolitan area and Pueblo Therapy Center). The table below shows the contributions by Scottish Rite Foundation and *Rollie R. Kelley Family Foundation* to evaluation, therapy, camp, and parent education programs in 2010. The overall average cost per child for services at The Children’s Hospital in 2010 was \$ 1,708, a remarkably small investment for a lifetime of communication and learning.

Program (# Children)	Scottish Rite Foundation or <i>Rollie R. Kelley Family Foundation</i> contribution	Average Cost per Child
Individual Therapy (228)	\$ 508,499	\$ 2,230
Group Therapy (38)	\$ 37,668	\$ 991
Individual and Group Therapy (21)	\$ 70,203	\$ 3,343
Cleft Palate Clinic (81)	\$ 12,208	\$ 151
Talking with Technology Camp (24)	\$ 44,659	\$ 1,861
* <i>First Steps Camp</i> (4)	\$ 3,140	\$ 785
<b>TOTAL (396)</b>	<b>\$ 676,377</b>	<b>\$1,708</b>

\*Includes support to five siblings and ten parents who attended this weekend program.

### PROGRAM DESCRIPTION

The department offers a wide variety of programs to meet the diverse needs of children with speech, language, learning, and communication disorders. Services are provided in locations convenient to the families’ homes at The Children’s Hospital Main Campus (Aurora) and community-based Care Centers (Westminster, Littleton, Parker, and Pueblo). Youngsters who receive services at The Children’s Hospital include children with autism spectrum disorder, apraxia of speech and other motor disorders of the oral mechanism, augmentative/alternative communication needs, cleft lip and palate, developmental delay, dysfluency, head injury and stroke, learning disabilities, sensory dysfunction such as deafness, and voice disorders. Currently, more than 65 speech-language pathologists, 17 audiologists, 10 learning disabilities specialists, a clinical social worker, deaf educator, and family consultant provide care to children and their families through the Department of Audiology, Speech Pathology, and Learning Services at The Children’s Hospital.

### ACCOUNTABILITY

The Children’s Hospital is committed to documenting the effectiveness of treatment through validated, standardized clinical measures, and parent assessment. To contribute to the statewide database documenting treatment effectiveness in all RiteCare Programs, families complete the Child Development Inventory, a 360-item questionnaire probing developmental domains of social interaction,



SCOTTISH RITE FOUNDATION OF COLORADO  
2010 ANNUAL REPORT  
THE CHILDREN'S HOSPITAL

language comprehension, expressive language, fine and gross motor, and general development, upon their child's entry to therapy and at six months intervals thereafter. Since database inception, The Children's Hospital has contributed parent assessments for 405 children to this database (N = 966 in statewide database). Summary tables from this database consistently show rapid increase in children's social interactive skills and slower, but persistent, gains in language development in the first two years of therapy.

## **LEADERSHIP**

The Department of Audiology, Speech Pathology, and Learning Services is committed to leadership through development of future generations of professionals and through supporting colleagues in rural and remote communities. In 2010, 10 graduate students in speech-language pathology and 15 in audiology benefited from clinical externship experiences at the hospital. The Cochlear Implant Team provided community-based outreach programs in Grand Junction, Montrose, Breckenridge, and Bozeman, Montana. These programs provided professional educational training and consultation as well as parent support for families of children with special communication needs. The department also sponsored two major conferences/lectures in 2010. The Annual Language-Learning Conference focused on *Developmental Speech Disorders: A Neurologic Perspective* (Ken Bleile, Ph.D., Professor, University of Northern Iowa). The Annual Advances in Children's Hearing Lecture highlighted *New Frontiers in Pediatric Otologic Disorders* (Craig Buchman, M.D., Professor, University of North Carolina).

Department leadership and staff contribute professional service to many state, national, and international associations including the Colorado State Department of Public Health and Environment Infant Hearing Advisory Committee, the Colorado Cochlear Implant Consortium, the Colorado Department of Education, the Colorado Speech-Language-Hearing Association, the American Speech-Language-Hearing Association, the American Academy of Audiology, the International Society of Audiology, and the international Newborn Hearing Systems Conference Committee.

## **ACKNOWLEDGEMENT**

Although the economic forecast for our nation brightened in the closing days of 2010, many families continue to struggle with job loss, insurance premium price hikes, and lost savings. For parents, ensuring that their children receive the care they need for optimum development is one of their greatest anxieties. Scottish Rite Foundation support allows us to reassure families that needed care is within reach. We are grateful not only for this sustaining support, but also for the trust of Masons throughout our state in allowing us to serve children and families with your resources.

Respectfully submitted,  
*Deborah Hayes, Ph.D.*

Kelley Family/Schlessman Family Scottish Rite  
Masons Chair in Childhood Language Disorders  
The Children's Hospital – Colorado

Professor  
University of Colorado,  
School of Medicine





## SCOTTISH RITE FOUNDATION OF COLORADO 2010 ANNUAL REPORT

### **STATISTICAL SUMMARY**

In 2010, the Scottish Rite Foundation (SRF) helped 55 children receive therapy at The Children’s Hospital Therapy Center – Pueblo. The table below summarizes the type of services offered, number of children served, SRF contribution for each service, and average cost per child for these services.

Program (# of Children)	SRF contribution	Average Cost per Child
Individual Therapy (44)	\$ 138,392	\$ 3,145
Group Therapy (4)	\$ 7,456	\$ 1,814
Individual and Group (7)	\$ 26,142	\$ 3,735
<b>TOTAL (55)</b>	<b>\$ 171,990</b>	<b>\$ 3,127</b>

### **PROGRAM DESCRIPTION**

The Children’s Hospital Therapy Center – Pueblo continues to offer a wide range of services to children in the community and surrounding area. Lisa Martin, augmentative and alternative communication specialist, conducted an outreach clinic in December and is working on obtaining computerized communication devices for three of our children. The therapists attempt to keep abreast of current trends in the field. Valerie Rosen and Jaclyn Mutz participated in specialized training in feeding disorders at The Children’s Hospital in Denver in June. Kathryn Duren and Becky Doidge became certified Hanen® More Than Words instructors in September. The children in southern Colorado were once again treated to a picnic at the Pueblo Zoo in September and a Christmas party in December sponsored by the Scottish Rite Masons.

### **ACCOUNTABILITY**

The Children’s Hospital Therapy Center – Pueblo has several accountability measures in place. The Child Development Inventory measures clinical outcomes; Pueblo contributed data on 44 children to this data base in 2010. Professional Research Consultants measure customer satisfaction; Pueblo achieved a score of 87% excellent, well above the expected target of 73.5% excellent. Morehead measures employee job satisfaction; the Pueblo staff’s response was in the above average range (Tier 1) compared to a national benchmark.



## **LEADERSHIP**

Martha Drake took a more active role on the Soaring Eagles Center for Autism board in 2010 moving from the Advisory Board to the Board of Directors. She attends monthly board meetings and helped with their fundraiser, a comedy night and auction, in October. Several of our therapists do contract work with the Colorado Blue Sky Enterprises, our local Part C provider. A strong relationship with community partners helps our children obtain the services they need and strengthens our referral base.

Kathryn Duren supervised a graduate student in speech-language pathology from the Medical University of South Carolina in the spring.

## **ACKNOWLEDGEMENT**

The therapists and families of children served at The Children's Hospital Therapy Center – Pueblo would like to thank the Scottish Rite Foundation for their generous support of our program. In 2011, we would like to explore other clinical outcome measurement tools, specifically the National Outcomes Measurement System for Speech-Language Pathology developed by the American Speech-Language-Hearing Association.

Respectfully submitted,  
Martha Drake, M.A., CCC-SLP  
RiteCare Program Director



**SCOTTISH RITE FOUNDATION OF COLORADO  
2010 ANNUAL REPORT**

**STATISTICAL SUMMARY**

In 2010, the Scottish Rite Foundation (SRF) helped one child receive therapy at Sterling Regional MedCenter. The table below summarizes the type of services offered, number of children served, SRF contribution for each service, and average cost per child for these services.

Program	Number Served	SRF contribution	Average Cost per Child
Therapy, Individual	1	\$687.50	\$687.50
Therapy , Group			
Parent Education			
<b>TOTAL</b>	<b>1</b>	<b>\$687.50</b>	<b>\$687.50</b>

**PROGRAM DESCRIPTION**

Sterling Regional MedCenter offers pediatric speech-language services through its outpatient rehabilitation department. Services are provided on an individual basis, with an emphasis on parent involvement during weekly sessions and parent training for long-term carry-over of skills. Sterling Regional MedCenter offers Occupational Therapy and Physical Therapy services as well, and therapy is guided by a holistic approach to the child.

**ACCOUNTABILITY**

Each child’s skills are evaluated at the onset of therapy using norm-referenced tests, as well as informal observations. Norm-referenced tests allow comparisons between children within the same age-group. Children then receive on-going formal and informal evaluations that help guide the course of that child’s speech therapy program. Included in assessment information is parent’s rating of their child’s level of progress toward their child’s identified goals.

**LEADERSHIP**

Sterling Regional MedCenter employs one speech-language pathologist who provides direct services to children and families, as well as provides resource information to the families in Northeast Colorado.

This professional also helps families’ transition services for their child between community agencies to ensure continuity of care for their child.



**ACKNOWLEDGEMENT**

Although only one family received Scottish Rite assistance this past year, that Scottish Rite contribution significantly helped that family acquire the services they needed for their child. I remain grateful for the continued support of the Scottish Rite Foundation in Northeast Colorado.

Respectfully submitted:

Meryl Stern, MA, CCC-SLP  
RiteCare Program Director

**SCOTTISH RITE FOUNDATION OF COLORADO  
2010 ANNUAL REPORT**

**STATISTICAL SUMMARY**

In 2010, the Scottish Rite Foundation provided financial support for 78 children to receive speech and language services in the Grand Junction area, as well as New Castle and Mesa, Colorado.

Program	Number Served	Scottish Rite Foundation Contributions	Average Cost per child
Individual and Group Therapy	48	\$ 110,360	\$ 2,299
Individual Therapy Only	15	\$ 29,760	\$ 1,984
Group Therapy Only	15	\$ 14,800	\$ 992
<b>Total</b>	<b>78</b>	<b>\$ 155,000</b>	<b>\$ 1,987</b>

**PROGRAM DESCRIPTION**

The RiteCare speech and language program is located in St. Mary's Hospital's Life Center, a free standing outpatient therapy facility. In 2010, our program provided speech, language and literacy services for children from 1-year through 7-years, and provided summer services for children up to 12 years of age.

Children with a variety of diagnoses are referred to our program through their physician, the Part-C and Child Find Teams, or directly by the parents. Each child's treatment schedule was individualized based on their specific needs.

This past year we have expanded our theme based therapy programs. The weekly themes are constructed around a book. Each book is chosen for the concepts, vocabulary, and/or the speech sounds it contains. The themes are expanded or modified so children are provided repetition and practice of the materials throughout all their therapy sessions each week. Our reading readiness program and summer literacy programs are based on a multisensory approach. Parents are requested to directly participate in the therapy session to prepare them to use the techniques while helping with their children with their daily homework assignments.

**ACCOUNTABILITY**

The St. Mary's Speech and Language program participated in the statewide Scottish Rite accountability projects. Parents complete the Child Development Inventory (CDI) for children who are between six months and five years of age. They first complete the Child Development Inventory on their initial visit to our program and again every six months. The results of CDI, along with the results of other

SCOTTISH RITE FOUNDATION OF COLORADO  
2010 ANNUAL REPORT  
ST. MARY'S HOSPITAL LIFE CENTER

standardized test are reviewed with each family; goals are developed or modified based on these test results. We also use this information to provide family education and to create home programs. Then our data from the CDI is compiled with the other Scottish Rite programs in Colorado to document continued positive outcomes of the children included in our programs.

St. Mary's Hospital also participates in Hospital Consumer Assessment of Healthcare Providers and Systems for improving patient care. The 2010 average for the outpatient speech-language department was 88.5%, patient satisfaction.

To ensure our ongoing skill development, our staff participated in the following educational programs in 2010: Cochlear Implant Training through Children's Hospital, The Acoustics of Speech, Birth -21 rating Scales and Language-Literacy Connections, Developmental Speech Disorders: A Neurological Perspective, DynaVox Maestro- Express, Assessing Dual Language Learners 0- 5, Scottish Rite Rhythm and Blues Conference, Dyslexia In-Service.

### **LEADERSHIP**

Our department staff is comprised of eight certified speech and language pathologists, one clinical fellow, one speech therapy assistant, two therapy aides, and one case manager.

Two of our staff members are board members of the Colorado Speech Language and Hearing Association, and more than half of the staff is participating members of Colorado Speech Association. Other community agencies in which our staff have leadership roles or are participating members of include: The Autism Task Force, Interagency Counsel for the Child, Child Find Assessment Team, Cleft Plate Team of Western Colorado, Family Support Services, Children with Special Needs Task Force.

### **ACKNOWLEDGEMENT**

The Scottish Rite Foundation has provided financial support in Grand Junction and surrounding areas since 1996. Over the years the Scottish Rite program has provided \$2,440,908 for 1876 children receiving speech language and learning programs. They have also contributed \$56,000 for therapy materials and equipment. I would especially like to "Thank" the members of our review board, these individuals include: Don Hobbs, Richard Carnett, James Smith, Jimmy McBride, and Larry Bangert. In these very challenging economic times, you have continued to allow families to access speech-language therapy for their children, and we sincerely thank you. It is an honor to be associated with this distinguished organization.

Our goals for 2011 include:

1. Increasing our knowledge of new technology for communication including: iPhones and iPads.
2. Ongoing education in the field of Cochlear Implants/Hearing Impaired therapy programs.
3. To promote the awareness of the Scottish Rite Philanthropy in our community.

Respectfully Submitted:

Amy Brophy-Neilsen, MS, CCC-SLP  
RiteCare Program Director





## SCOTTISH RITE FOUNDATION OF COLORADO 2010 ANNUAL REPORT

### STATISTICAL SUMMARY

In 2010, the Scottish Rite Foundation (SRF) helped 13 children receive therapy at the University of Northern Colorado (UNC). The table below summarizes the type of services offered, number of children served, SRF contribution for each service, and average cost per child for these services.

Program	# of Children	SRF Contribution	Average Cost Per Child
Individual Therapy	8	\$ 5,260	\$ 657
Group Therapy	5	\$ 1,980	\$ 396
<b>Total</b>	<b>13</b>	<b>\$ 7,240</b>	<b>\$ 557</b>

### PROGRAM DESCRIPTION

The University of Northern Colorado (UNC) Audiology and Speech Language Sciences Program provides educational opportunities to undergraduate and graduate students. Our Speech-Language Pathology and Audiology Clinic offers diagnostic and intervention services across the age span to individuals with communication needs. Preschool children who have speech, language, and hearing disorders receive intervention services through the generous support of the Scottish Rite Foundation of Colorado. Our focus is to identify and serve preschoolers in Northeast Colorado who may not otherwise receive speech and language therapy due to a lack of service availability or limited funding.

The Talking and Listening for Preschoolers (TALP) program was established in 2007. The program is a literature-based interactive group that meets two times per week for two-hour sessions, resulting in 52 hours of direct intervention per semester. The curriculum focuses on development speech, language, and literacy skills. Based on current enrollment, children are receiving a program focused on speech production (articulation and phonology) with a secondary language-literacy focus. Children are in the program for 1 ½ hours twice weekly.

Speaking and Signing Stories (SASS) is offered in the summer and is designed for children who are deaf or hard-of-hearing. It is a literature-based program that targets all components of language through the use of both speech and American Sign Language.

### ACCOUNTABILITY

The UNC Speech Language Pathology and Audiology Clinic professionals and their students monitor the progress of each child receiving speech-language intervention services. Prior to each semester (12-14 week sessions, 3 times per year), each child receives a pre-therapy file review, assessments as needed, and new goals and objectives are developed in consultation with the child's family. Progress is monitored and documented, and a detailed progress report is shared with the family each semester.



Professional relationships were maintained in 2010 with Weld School District 6, Thompson Valley R2J, the Centennial BOCES, and the Poudre R1 School District. The successful collaborative efforts between UNC and public schools help promote the availability of SRF funding in our community. In addition, such collaboration provides valuable insight into the needs of families seeking services for their children.

The participation of graduate students to provide services to children enables these future professionals to develop skills necessary to become leaders in their own communities. Supervisors provide detailed feedback to graduate students during their clinical sessions and evaluate their clinical competencies at the end of the semester. By educating the graduate clinicians about the Scottish Rite Foundation and community service, we increase the likelihood that these students will be adopting similar roles in the future.

### **LEADERSHIP**

Two graduate students in speech-language pathology received scholarships from the Colorado Masons Benevolent Fund Association in 2010: Natasha Maria and Elisabeth Robertson. The students and their families attended the annual dinner and presentation of the awards. Their awards were also announced in the RiteCare newsletter.

### **ACKNOWLEDGEMENT**

The Scottish Rite Foundation of Colorado has significantly improved opportunities for many children and their families in Northern Colorado. It is so very important that clinics extend language intervention services to children who do not have the financial access to such services. Program Goals for 2011 include:

1. We continue to be available to offer services to children in communities in the northeastern area. We intend to advertise our services through the media and our contacts with SLPs and other service providers in schools and other agencies.
2. This year we will increase the number of children served through SRF funding. This will occur through increased enrollment in TALP and other programs.
3. Follow up will occur with community contacts to continue to build collaborative relationships.

Respectfully submitted:

Kathleen Fahey, PhD  
Rite Care Program Director



## SCOTTISH RITE FOUNDATION OF COLORADO 2010 ANNUAL REPORT

### STATISTICAL SUMMARY

In 2010, the Scottish Rite Foundation (SRF) helped two families participate in speech-language therapy programs at Arkansas Valley Regional Medical Center (AVRMC). The table below summarizes the services provided:

PROGRAM	NUMBER SERVED	SRF CONTRIBUTION	AVERAGE COST PER CHILD
Individual therapy	2	\$4175	\$2088

### PROGRAM DESCRIPTION

The program at AVRMC is part of the outpatient rehabilitation clinic. Our clinic is small with only one full-time speech-language pathologist on staff. Over the past year, our clinic has had an increase in the number of children referred and receiving speech-language pathology services. In our rural area, the availability of speech-language pathologists to staff programs for infants and preschool children has decreased and our clinic has been the only source for referral and treatment of these children.

### ACCOUNTABILITY

The rehabilitation department at AVRMC participates in on-going departmental evaluations for quality assurance with focus on customer satisfaction, quality of treatment and use of evidence-based treatment techniques. We use patient surveys to assess the patient's (or parent's) satisfaction with the program. We also utilize the Global Rating of Change (GROC), which is a patient's (or parent's) assessment of progress, upon discharge.

### LEADERSHIP

In the community, our full-time therapist also serves as a volunteer consultant for the Arkansas Valley Hospice Association, providing speech, language or swallowing evaluations and treatment as needed at no charge.

### ACKNOWLEDGEMENT

At Arkansas Valley Regional Medical Center, we consider ourselves privileged to continue to participate in the Scottish Rite Foundation's scholarship program. The effects of economic changes have been felt by many families in our rural area and the SRF scholarships have provided assistance that is greatly appreciated. Our number of participants in the Scottish Rite Foundation scholarship program may be small when compared to other programs, but the opportunity to provide treatment to children who have no other source of funding is greatly appreciated.



SCOTTISH RITE FOUNDATION OF COLORADO  
2010 ANNUAL REPORT  
ARKANSAS VALLEY REGIONAL MEDICAL CENTER

Our goal for 2011 continues to focus on expansion of the number of children served and increasing community awareness of the Scottish Rite Foundation's scholarship program.

Thank you for continuing to include Arkansas Valley Regional Medical Center as part of the Scottish Rite Foundation programs. We greatly appreciated your continued support.

Respectfully submitted:

Carol L. McEntyre, MS, CCC-SLP  
RiteCare Program Director



**SCOTTISH RITE FOUNDATION OF COLORADO  
2010 ANNUAL REPORT**

**STATISTICAL SUMMARY**

In 2010, the Scottish Rite Foundation (SRF) helped 136 children receive therapy at Children's Speech & Reading Center (CSRC). The table below summarizes the type of services offered, number of children served, SRF contribution for each service, and average cost per child for these services.

Program	# of Children	SRF Contribution	Average Cost Per Child
Individual Therapy	37	\$ 70,598	\$ 1,908
Group Therapy	8	\$ 12,855	\$ 1,606
Early Literacy Programs	91	\$ 39,705	\$ 436
<b>TOTAL</b>	<b>136</b>	<b>\$ 123,158</b>	<b>\$ 905</b>

A \$4,000 matching grant from the Scottish Rite Foundation helped CSRC continue to provide free Speech-Language and Reading screenings on an ongoing basis. Our families come from the communities of Fort Collins, Loveland, Greeley, Estes Park, Johnstown, Berthoud, Windsor, and Wellington. CSRC provided 181 free screenings in 2010.

**PROGRAM DESCRIPTION**

In response to our community’s need, CSRC added an additional social skills group, “High 5 Club”, for children five to seven years old, diagnosed with autism or Asperger’s Syndrome. This group addresses friendship skills, such as *sharing, it’s okay to lose, feelings, and conversational turn-taking*. Our “Making Friends” group addresses turn-taking through playing games with another child or group of children, initiating play with another child or group of children, playing beside and joining in physical play with another child or group of children, and asking and answering questions with a child or group of children. “Super Friends” addresses verbally initiating play with one peer and a group of peers, asking and answering questions with peers, expanding length of conversational turns with peers, repairing communication breakdowns, and increasing complexity of pretend play with peers.

In 2010, CSRC also added augmentative and alternative communication (AAC) evaluations and therapy to our services. We successfully acquired a device for one child through his Medicaid benefit. We are currently trialing various devices for three other children with either autism or childhood apraxia of speech. AAC devices can give a non-verbal child a way to communicate and can supplement existing speech or replace speech that is not functional. The use of these tools may increase social interaction, school performance, and self esteem.

**ACCOUNTABILITY**

Children’s Speech & Reading Center continues to participate in the statewide Scottish Rite Foundation



SCOTTISH RITE FOUNDATION OF COLORADO  
2010 ANNUAL REPORT  
CHILDREN'S SPEECH AND READING CENTER

accountability project by administering the Child Development Inventory (CDI). This "parent report" inventory provides information on the family's perception of their child's performance in the home environment. This information is shared in a statewide survey to evidence the success of early intervention programs.

At the individual level, each child's baseline skills are assessed and used to set short- / long-term goals for the therapy program. Six-month treatment plans are developed and modified in accordance with the child's progress toward goals. Progress is measured by both functional gains and standardized measures. The family is included in development of individualized goal setting.

Every six months, families respond to a Satisfaction Survey by answering questions about quality of service and child's progress. Once again, this year, families have given the Center a 95% approval rating.

### **LEADERSHIP**

Children's Speech & Reading Center gave 12 presentations in 2010, including the Early Childhood Council of Larimer County, two Masonic Lodges in Fort Collins, two local preschools, three United Way agency fairs, two service clubs, the RiteCare Biennial Conference, and an educational psychology/learning center. These presentations focused on speech, language, and reading development from birth to 12 years, signs of delay, what CSRC is doing to help serve the communities in Northern Colorado, and how the Scottish Rite Foundation of Colorado helps support our mission.

In order to maintain the most current best practices, CSRC staff have participated in workshops and conferences this year to increase skills in the areas of cochlear implants, memory, autism, neurological perspectives of developmental speech disorders, cleft palate, stuttering, feeding disorders, reading disabilities, augmentative and alternative communication, fundraising, and social media marketing.

### **ACKNOWLEDGEMENT**

The state of Colorado is extremely fortunate to have RiteCare centers in their communities. The Scottish Rite Foundation's financial support has made a tremendous difference for our families, who otherwise would not have been able to afford therapy services. We are very grateful to the Scottish Rite Foundation of Colorado for their annual support and matching funds; we couldn't do what we do without your help! We appreciate the Foundation's commitment to the families and children of Northern Colorado and look forward to this continuing partnership.

Respectfully submitted:



Elise Tobler, MA, CCC-SLP  
RiteCare Program Director



**SCOTTISH RITE FOUNDATION OF COLORADO**  
**2010 ANNUAL REPORT**

**STATISTICAL SUMMARY**

In 2010, the Scottish Rite Foundation (SRF) helped 41 children receive ongoing therapy in various programs at The Speech Language and Hearing Center (SLHC) at the University of Colorado, Boulder. A number of children received both group and individual therapy based upon need for intensive programs, however 41 represents an unduplicated count of children and a families served throughout the year. The table below summarizes the type of services offered, number of children served, SRF contribution for each service, and average cost per child for these services receiving needed support.

Program	Number Served	SRF Contribution	Average Cost per Child/Year
Therapy, Individual	9	\$ 6,650	\$ 739
Therapy, Group	32	\$20,350 **	\$ 636
Parent Education*	*		
<b>TOTAL</b>	<b>41</b>	<b>\$ 23, 000 + \$ 4,000**</b>	<b>\$ 659</b>

\*Parents of all children enrolled in the Child Learning Center (CLC) toddler and preschool programs receive parent education services and engage in workshops and parent nights with parent resource consultant and team as part of their parent program. \*\* Total includes four children funded by a \$ 4,000 matching grant from the SRF.

**PROGRAM DESCRIPTION**

The SLHC offers a variety of individual and specialized group services through the CLC serving 388 children and families in '09-'10, with other Center programs for both children and adults. Evidence-based, family centered and culturally competent practices are central to the clinical education opportunities that are available to over 60 graduate students currently enrolled in the Masters' degree speech-language pathology (SLP) program. The Speech Language Hearing Sciences (SLHS) Department educates hundreds of students enrolled in both undergraduate and graduate degree programs of audiology and speech-language pathology each year.

We are especially proud of our graduate students who were awarded *Dwight A. Hamilton Scottish Rite Foundation Graduate Scholarships in Speech-Language Pathology* as well as our two students who received *Sam and Millie Hillburn Scholarships* from The Supreme Council. We continue to strive towards excellence in research, teaching, and service as we prepare future leaders for the profession to serve young children with communication challenges and their families.

Program expansion this past year has been marked by continued development of the CLC Outreach Program including collaboration with the Boulder County Head Start programs providing community



services and professional development to area preschool teachers and families. This has been possible given continued collaborative grants and matching funding from SRF, the Rose Foundation of Denver, the Temple Buell Foundation, and The Community Foundation of Boulder County. We have also been awarded funding to continue to serve preschool age children in inner city Denver Public Schools through Project Learn, a federally funded early reading first grant.

### **ACCOUNTABILITY**

The CLC and the SLHC are actively engaged in documenting child outcomes through the Child Development Inventory project specifically for SRF as well as individualized measures for each child. Data is also routinely collected from families regarding satisfaction and perception of their children's programs to both inform and document children's growth and progress.

### **LEADERSHIP**

In 2010, the CLC Outreach Team provided community workshops to colleagues in early care and education and family members focused on early language and literacy development. Full-time faculty, clinical faculty, and graduate students collaborated on numerous presentations at national professional conventions and meetings.

### **ACKNOWLEDGEMENT**

As the downturn in our economy continues to impact families, the support of the Scottish Rite Foundation of Colorado is increasingly important. We are so very appreciative of this support.

Respectfully Submitted:

Susan M. Moore, JD, MA, CCC-SLP  
RiteCare Program Director





Memorial Hospital for Children

**SCOTTISH RITE FOUNDATION OF COLORADO  
2010 ANNUAL REPORT**

**STATISTICAL SUMMARY**

In 2010, the Scottish Rite Foundation (SRF) helped 38 children receive speech-language therapy at Memorial Hospital for Children. The table below summarizes the type of services offered, number of children served, SRF contribution for each service, and average cost per child for these services.

Program	Number Served	SRF contribution	Average Cost per Child
Therapy, Individual	32	\$ 68,763	\$ 2,148
Therapy, Group	6	\$ 3,044	\$ 507
<b>TOTAL</b>	<b>38</b>	<b>\$ 71,808</b>	<b>\$ 1,889</b>

**PROGRAM DESCRIPTION**

Memorial Hospital for Children serves both inpatient and outpatient pediatric needs for the city of Colorado Springs. The pediatric outpatient clinic provides speech-language therapy services to children ranging in age from birth to 21. Our facility is committed to serving children in locations convenient to families. Currently, we are providing services at the main facility, Printer’s Park Medical Plaza, located in central Colorado Springs, at the Powers clinic, located in east Colorado Springs, and at the Briargate clinic, located near the North Hospital campus.

Sixteen speech-language pathologists, 12 physical therapists, 18 occupational therapists, and two audiologists staff the facility. An outpatient manager supervises the staff with two coordinators providing support for management. In addition, two developmental pediatric physicians participate in multiple specialty clinics, including Autism and Developmental Disorders Clinic, Infant Developmental Assessment Clinic, Cleft Lip and Palate Clinic, Feeding Clinic, and, in collaboration with The Children’s Hospital (TCH), Rehabilitation Clinic.

**ACCOUNTABILITY**

Memorial Hospital for Children is actively engaged in documenting outcomes through the Child Development Inventory project, specifically for SRF, as well as individualized outcome measures for each child. Annual re-evaluations are also completed to measure the patient’s clinical outcomes.

Memorial Pediatric Rehabilitation is also currently considering the potential for working in conjunction with kinesiotope expert, Kim Rock Stockheimer, to contribute to research regarding the effects of kinesiotope on rehabilitating swallow function in the adult and pediatric populations.



## **LEADERSHIP**

Memorial Hospital for Children pediatric staff have initiated online learning events provided via Webex regarding infant development and treatment. These learning events have been and will continue to be provided by Memorial Hospital physicians and therapists for communities across Colorado.

Carin Rowan, one of the outpatient coordinators, has been nominated for and will receive the Hope Award in February 2011 from the Cerebral Palsy Association of Colorado Springs. This award is the highest tribute for individuals and businesses that provide exceptional services and assistance to individuals who have cerebral palsy and their families.

Memorial Pediatric Rehabilitation continues to be one of the only facilities in the Colorado Springs area which provides skilled pediatric modified barium swallow studies to evaluate swallow structure and function.

Memorial is also continues to offer bi-annual speech-language and hearing screenings, which are available at no cost to the Colorado Springs community. Following these screenings, referrals are made to families to appropriate professionals.

## **ACKNOWLEDGEMENT**

With the ever-changing economy and job market, the Scottish Rite Foundation of Colorado has been an important support system for families in the Colorado Springs area. Families have experienced changes in insurances, coverage, deductibles and family budgets. Throughout those changes, the Scottish Rite Foundation has remained a consistent option for continued speech-language therapy that may not have otherwise been available to these families. We appreciate the steadfast, caring support provided by the Scottish Rite Foundation of Colorado for our patients and families.

Respectfully submitted:

Ericka Wendorf, MA, CCC-SLP  
RiteCare Program Co-Director

Laura Moody, MA, CCC-SLP  
RiteCare Program Co-Director

**SCOTTISH RITE FOUNDATION OF COLORADO  
2010 ANNUAL REPORT**

**STATISTICAL SUMMARY**

In 2010, the Scottish Rite Foundation (SRF) helped 51 children receive therapy at Mountain View Therapy–Pediatrics @ Montrose Memorial Hospital (MVTP). We have been very frugal with the funding this year, seeing many of our children in small group settings to help stretch our dollars.

In addition, MVTP has not raised the charges for speech therapy since 2006. This decision was based on the value that MVTP places on our partnership with the SRF. There will not be a rate increase for 2011.

Program	Number Served	SRF contribution	Average Cost per Child
Therapy, Individual	33	\$50,260	\$1523
Therapy , Group	42	\$30,379	\$723
<b>TOTAL CHILDREN</b>	<b>51</b>	<b>\$80,639</b>	<b>\$1,581</b>

**PROGRAM DESCRIPTION**

MVTP provides therapy in a five county area with clinics in Montrose and Delta. In June we moved into a newly remodeled building where pediatric Speech-Language-Hearing Therapy and Literacy, Occupational Therapy and Physical Therapy services are provided. Our families enjoy having all pediatric therapy services in one location.

The summer focus included speech and language groups for students whose primary language is Spanish, therapy programs for school aged children and ongoing therapy for toddlers and preschoolers. Our Delta site summer program consisted of two, 3-week blocks of intensive speech and language therapy. All children who consistently attended made significant improvement in their communication and social skills. The families and school personnel continue to comment on the success of these children in their community and classrooms. We are looking forward to continuing with this model of intensive speech and language therapy for the summer of 2011.

**ACCOUNTABILITY**

MVTP participates in the individualized measurement of children's outcomes using the Child Development Inventory Profile for the SRF. We have a monthly appraisal meeting with our RiteCare Masonic committee. We also ensure that our services are consistent with community expectations by relying on:

1. accountability to the administration and physicians of Montrose Memorial Hospital through electronic medical records;

SCOTTISH RITE FOUNDATION OF COLORADO  
2010 ANNUAL REPORT  
MONTROSE MEMORIAL HOSPITAL

2. standardized testing, family home programs, and meetings with families;
3. collaboration with agencies that serve the pediatric population including meetings with school district personnel; the community center staff for individuals with special needs; monthly meetings with personnel from the pediatrician's office and monthly meetings with the pediatric therapy team.

## **LEADERSHIP**

MVTP RiteCare co-directors were able to attend the biannual RiteCare Director's Meeting in New Orleans. The information presented at the poster session from Montrose was informative and well received. It was beneficial to network with Masons and directors from programs across the country. Colorado continues to be the benchmark for RiteCare programs as noted by SRF support and program development.

We were pleased to host Dr. Tracy Kovach, The Children's Hospital (TCH), who provided outreach to children with augmentative communication systems, their families and school personnel. We also sponsored a two day outreach with assistance from the Cochlear Implant team from TCH. This provided information and education to therapists, parents and school district personnel.

Partnering with University of Northern Colorado's Speech-Language Department, our families were able to participate in a research program. Students from UNC were able to document parental perception of their child's needs and services that are delivered.

## **ACKNOWLEDGEMENT**

Montrose County's unemployment rate accelerated to 10.5% by March and continued at that level through the end of 2010. This rate is higher than the average for surrounding counties, our state and the nation (reported in Daily Press January 2011).

As the downturn in our economy continues to impact families, the support of the SRF is increasingly important. Certainly, individual effects of unemployment are devastating, but reductions in health insurance benefits for the employed also impact a family's ability to access therapy for their child. Our families are grateful, as are we, for the continued commitment of the SRF to make sure that children with speech and language deficits receive the therapy that they need. These services provide each child and family with the groundwork for establishing communication that will last for a life time. Thank you for your partnership with us.

Respectfully submitted:

R. Jeneine Stevenson, MS, CCC-SLP  
RiteCare Program Co-Director

Patti Anderson, CCC-SLP  
RiteCare Program Co-Director



## SCOTTISH RITE FOUNDATION OF COLORADO 2010 ANNUAL REPORT

### STATISTICAL SUMMARY

In 2010, the Scottish Rite Foundation (SRF) helped 188 children and their families access the Treasure Chest Program through the Pinon Project – Cortez. For August-December 2010 the total number of children served was 120. The table below summarizes the location of services and number of children served at each location. Totals are provided for the end of the 2009-2010 school year (August 2009 - June 2010) and for the first half of the current school year (August 2010 - December 2010). The SRF contributed \$52,000 for this program resulting in an average program cost of \$277 per child served, based on the number served in school year 2009 – 2010 (N=188).

Treasure Chest Program Sites	Number Served	
	Dec '10	Jun '10
Cortez Library	9	26
Tree House/ PinonProject	36	44
High Desert Early Head Start	7	--
Por Dia	7	--
Children's Kiva	14	--
Trinity Lutheran	5	--
Mancos Head Start	7	12
Dolores/Teddy Bear	23	30
Dolores Library	8	--
Dove Creek/Dove's Nest	4	22
Ute Mountain Utes	--	54
<b>TOTAL</b>	<b>120</b>	<b>188</b>

### PROGRAM DESCRIPTION

The Treasure Chest Program now serves ten sites listed in the table above. Five sites, including Dolores Public Library, are new to the program. The Ute Mountain Ute Head Start and 0-3 programs were unable to participate for the 2010-2011 school year due to their need to focus on their current program demands. Another Cortez preschool is being added in late January 2011. By the end of the school year we expect the number of children served to equal or surpass the 2009-2010 school year total (188).

We were fortunate to receive a \$500 grant from Kiwanis Club of Mesa Verde which was matched by the Scottish Rite Foundation. With this funding, we will purchase new books and materials to develop new theme chests as well as update and expand existing theme chests. It is clear that we have many program participants who will continue with the program as new themes or expanded versions of existing themes are provided. We want to continue to provide materials that promote parent engagement and family use. Another goal is to continue to identify which materials complement other services the children and families receive, including children with special needs.



SCOTTISH RITE FOUNDATION OF COLORADO  
2010 ANNUAL REPORT  
THE PINON PROJECT – TREASURE CHEST PROGRAM

We are finding that the materials complement parenting classes, parents as teachers programs and preschool social-emotional and developmental curricula, providing parents with concrete tools for practicing parenting skills and reinforcing at home what the children are learning at school.

**ACCOUNTABILITY**

A new developmental assessment program being implemented by area preschools this year, Teaching Strategies Gold, will be used as the assessment tool for Treasure Chest for the 2010 - 2011 school year. We will compare initial and end of term assessment data for Treasure Chest participants and non-participants at the Tree House site. The results of the 2009 - 2010 assessments, referenced in the End of Year Report for SRF dated June 30, 2010, did not demonstrate a correlation that was previously and consistently shown between Treasure Chest participation and higher developmental gains. The anecdotal evidence provided by parent surveys, however, continued to evidence significant relevant benefits to the children and families and a high degree of parent satisfaction with the program. We will continue with parent surveys as part of the program measurement process to maintain our responsiveness to parent feedback and as a means to track parent engagement through this program.

**LEADERSHIP**

Kathi Sutton moved to Boulder to attend graduate school in mid-August, passing the program coordinator torch to Karen Winchester. Diana Buza remains as Executive Director of the Pinon Project and Kellie Willis is the new Program Director for Pinon.

**ACKNOWLEDGEMENT**

It is a great privilege to be involved with this wonderful program as the new program coordinator. This program owes its existence and quality development over the past decade to the Scottish Rite Foundation of Colorado. It is a unique and well-established element of the communities we serve.

Respectfully submitted:

Karen Winchester, JD  
Treasure Chest Program Coordinator, Cortez



## SCOTTISH RITE FOUNDATION OF COLORADO 2010 ANNUAL REPORT

### STATISTICAL SUMMARY

In 2010, the Scottish Rite Foundation (SRF) helped 40 families access the Treasure Chest Program through Rocky Mountain SER Head Start. The table below summarizes the number of children served, age range and number of families on the waiting list. SRF contributed \$25,000 for this program as well as contributing an additional \$2,000 matching grant. Based on the original grant of \$25,000 from the Scottish Rite Foundation, the average program cost per child served was \$390.

Age Range (years)	Children Served	Families Waiting for Availability
0 – 2.5	22	
3 – 5	42	
<b>Total</b>	<b>64</b>	<b>54</b>

### PROGRAM DESCRIPTION

With support from the Scottish Rite Foundation, the Treasure Chest Program provides education and training for children and their families (siblings and parents) in a home based environment. The Treasure Chest Program provides early identification and intervention for children with possible developmental delays. The child’s development is screened and reviewed with parents. Additionally, school readiness is supported through early learning within the home.

The Treasure Chest Tubs are composed of developmentally appropriate materials that help strengthen every child’s growth and development. Each tub contains activities that are based on common themes.

Participation by the parents is an essential component of this program. The Early Literacy Coordinator reviews the materials with parents once a month during their scheduled home visits. The parents then guide their children through these activities.

### ACCOUNTABILITY

Each child receives a developmental screening upon entering preschool. Results of that screening are compared to follow-up screening at the end of the preschool program, typically in May of the following year. Data from the children enrolled in the Treasure

Chest program show consistent growth in language and readiness as measured by the DIAL 3 (Developmental Indicators for the Assessment of Learning).

The results for the 2010/2011 Dial 3 pre assessment for the thirty one children who do not have I.E.P.’s are shown below. The children who do have I.E.P.’s are being assessed by St. Mary’s Life Center



SCOTTISH RITE FOUNDATION OF COLORADO  
 2010 ANNUAL REPORT  
 ROCKY MOUNTAIN SER HEAD START – TREASURE CHEST PROGRAM

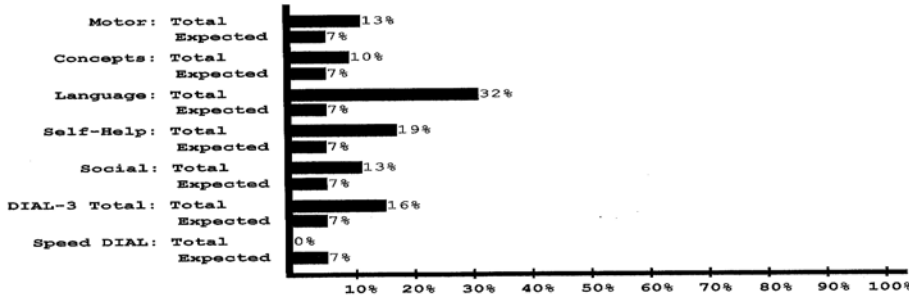
Speech Language Department and the Mesa County School District #51 Child Find. Of the forty two children currently enrolled, eleven already have I.E.P.'s

12/16/2010

**DIAL-3 ASSIST**  
 Developmental Indicators for the Assessment of Learning-Third Edition

**Group Summary**  
 7% Cutoff

	Motor	Concepts	Language	Self Help	Social	DIAL-3 Total	Speed DIAL
Total Number Tested:	31	31	31	31	31	31	0
Total Potential Delay:	4	3	10	6	4	5	0
Total Percent Potential Delay:	13%	10%	32%	19%	13%	16%	0%



COPYRIGHT 1998, AMERICAN GUIDANCE SERVICE, INC., CIRCLE PINES, MN 55014-1796

**LEADERSHIP**

Rose Owens, Disabilities and Mental Health Manager, has been working diligently with School District #51 and St. Mary’s Life Center qualifying more children so they can receive services for speech and language delays.

The Treasure Chest Program encourages our families who have children with speech and language delays to visit with Amy Brophy-Neilsen, M.S., CCC-SLP with St. Mary’s Life Center, to receive additional speech services.

**ACKNOWLEDGEMENT**

The success of the Treasure Chest Program is due to the continued interest, funding and support of the Scottish Rite Foundation.

Respectfully submitted:

Carmen Marsh, BA  
 Treasure Chest Program Coordinator, Grand Junction

