

**SCOTTISH RITE FOUNDATION OF COLORADO
2011 ANNUAL REPORT**

STATISTICAL SUMMARY

In 2011, the Scottish Rite Foundation (SRF) helped 345 children receive speech, language, learning, and/or parent education services at Children's Hospital Colorado (Children's Colorado; metropolitan area and Pueblo Therapy Center). The table below shows the contributions by Scottish Rite Foundation and *Rollie R. Kelley Family Foundation* to evaluation, therapy, camp, and parent education programs in 2011. The overall average cost per child for services at Children's Colorado in 2011 was \$ 1,601, a remarkably small investment for a lifetime of communication and learning.

Program (# Children)	Scottish Rite Foundation or <i>Rollie R. Kelley Family Foundation</i> contribution	Average Cost per Child
Individual Therapy (177)	\$ 393,992	\$ 2,226
Group Therapy (44)	\$ 51,463	\$ 1,170
Individual and Group Therapy (21)	\$ 41,200	\$ 1,962
Cleft Palate Clinic (63)	\$ 6,472	\$ 103
Talking with Technology (TWT) Camp (26*)	\$ 49,518	\$ 1,905
First Steps Camp (14**) <i>Rollie R. Kelley Family Foundation</i>	\$ 9,745	\$ 696
TOTAL (345)	\$ 552,390	\$ 1,601

*Does not include \$18,682 donation from the *Rollie R. Kelley Family Foundation* to support sibling, trainer, and personal care attendant programs at TWT Camp.

**Includes support for five siblings and ten parents who attended these weekend programs.

PROGRAM DESCRIPTION

The department offers a wide variety of programs to meet the diverse needs of children with speech, language, learning, and communication disorders. Services are provided in locations convenient to the families' homes at Children's Hospital Colorado Main Campus (Aurora) and community-based Network of Care Centers (Westminster, Littleton, Parker, and Pueblo). Youngsters who receive services at Children's Colorado include children with autism spectrum disorder, childhood apraxia of speech, augmentative/alternative communication needs, cleft lip and palate, developmental delay, dysfluency, head injury and stroke, learning disabilities, sensory dysfunction such as deafness, and voice disorders. Currently, more than 75 speech-language pathologists, 20 audiologists, 10 learning disabilities specialists, a clinical social worker, a deaf educator, and a family consultant provide care to children and their families through the Department of Audiology, Speech Pathology, and Learning Services at Children's Colorado.

ACCOUNTABILITY

Children's Hospital Colorado is committed to documenting the effectiveness of treatment through validated, standardized clinical measures, and parent assessment.

We contribute to the statewide database of outcomes on the Child Development Inventory (CDI), a 360-item questionnaire probing developmental domains of social interaction, language comprehension, expressive language, fine and gross motor, and general development, that parent's complete upon their child's entry to therapy and at six months intervals thereafter. Results from the CDI demonstrate robust progress in social communication and slower but steady progress in expressive and receptive language skills of children enrolled in therapy. This database also provides a comparative tool to assess effectiveness of different models of therapy.

LEADERSHIP

In 2011, the department developed a pilot project, "tele-audiology," using internet-based communication technology to provide infant diagnostic hearing evaluations to babies in Guam. This unique service allowed infants in Guam to receive the same high-technology diagnostic hearing evaluation that they would have received on-site at Children's Colorado. This project lays the groundwork for providing parent support and coaching to conduct speech-language intervention over the internet. The department is planning on initiating "tele-intervention" in second quarter 2012 and comparing effectiveness of internet-based therapy to conventional face-to-face treatment using the Child Development Inventory and other validated measures of children's progress.

ACKNOWLEDGEMENT

Although the economic forecast for our nation brightened in 2011, many families continue to struggle with job loss, insurance premium price hikes, and lost savings. For parents, ensuring that their children receive the care they need for optimum development is one of their greatest anxieties. We are grateful to the committed guidance of the Scottish Rite Foundation Board of Trustees for sustaining our care of children in these difficult times.

Respectfully submitted,

Deborah Hayes, Ph.D.

Kelley Family/Schlessman Family
Scottish Rite Masons Chair in Childhood Language Disorders
Children's Hospital Colorado

Professor
Physical Medicine and Rehabilitation
University of Colorado School of Medicine

**SCOTTISH RITE FOUNDATION OF COLORADO
2011 ANNUAL REPORT**

STATISTICAL SUMMARY

In 2011, the Scottish Rite Foundation of Colorado (SRF) provided financial support to 55 children at Children's Hospital Colorado Therapy Care, Pueblo. The table below summarizes the type of services offered, number of children served, SRF contribution for each service, and average cost per child for these services.

Program	Number Served	SRF contribution	Average Cost per Child
Therapy, Individual	48	\$118,724	\$ 2,473
Therapy, Group	6	\$ 24,990	\$ 4,165
Parent Education	1	\$ 2,322	\$ 2,322
TOTAL	55	\$146,036	\$ 2,655

PROGRAM DESCRIPTION

Children's Hospital Colorado Therapy Care, Pueblo celebrated 10 years of service to children in 2011. The clinic opened in April of 2001. It started with two full time speech-language pathologists and has grown to a staff of three fulltime, two part-time and four "as needed" speech-language pathologists. We have more than doubled our space and currently see more than 100 children per week.

Video technology came to Pueblo in 2011. We now have the ability to video link to meetings and conferences which has reduced travel time and improved training and communication with therapists in Denver and throughout the state.

Kathryn Duren attended trainings on a variety of speech generating devices in 2011. We hope to have her functioning as an augmentative communication specialist in the next year or two. She also attended a new Hanen© parent training program, *Talkability*, which is designed to help children with social language impairments learn how to play and communicate with peers.

Our feeding and swallowing program has grown significantly. Valerie Rosen and Jaclyn Mutz have expended a great deal of time and energy to meet the needs of this population.

The children in southern Colorado were once again treated to a picnic at the Pueblo Zoo in September and a Christmas party in December sponsored by the Scottish Rite Masons.

ACCOUNTABILITY

Children's Hospital Colorado Therapy Care, Pueblo has several accountability measures in place. The Child Development Inventory measures clinical outcomes; Pueblo contributed data on 38 children to this data base in 2011. Professional Research Consultants measure customer satisfaction; Pueblo achieved a score of 88% excellent which is well above the expected target of 73.5% excellent for the department as a whole.



An additional clinical outcome measure, National Outcomes Measurement System for Speech-Language Pathology developed by the American Speech-Language-Hearing Association, is being trialed at the Pueblo clinic. I will share more on this measure as results become available.

LEADERSHIP

I continue to serve on the board for the Soaring Eagles Center for Autism helping with their annual fundraiser, a comedy night and auction, in October. I will manage the Speech-Language Pathology staff at the new Children's Hospital Colorado Network of Care in Colorado Springs set to open in June of 2012. Interviewing, planning therapy spaces and materials and connecting with other professionals involved in the project have been my focus the past few months.

ACKNOWLEDGEMENT

We could not do our work as well or service as many children without the support of the Scottish Rite Foundation. Thank you for all you do! In 2012, my goal is to integrate the services provided at the new Network of Care in Colorado Springs with the Scottish Rite Masons. Together we can make this a successful program for children and families.

Respectfully Submitted,

Martha Drake, MA, CCC-SLP
RiteCare Program Director



**SCOTTISH RITE FOUNDATION OF COLORADO
2011 ANNUAL REPORT**

STATISTICAL SUMMARY

In 2011 the Scottish Rite Foundation benefitted 171 children who receive services through the Children’s Speech and Reading Center (CSRC), Fort Collins. The Table below summarizes the type of services offered, number of children served, SRF contribution for each service, and average cost per child for these services.

Program	Number Served	SRF Contribution	Average Cost per Child
Therapy, Individual	44	\$65,505.00	\$1488.75
Therapy, Group	8	\$5,080.00	\$635.00
Early Literacy (off-site sessions in area preschools)	122	\$37,647.50	\$308.58
Total	171* *3 children received both individual and group therapy, so they are not counted twice in this total	\$108,232.50	\$632.94

A \$4,000 matching grant from the Scottish Rite Foundation assisted CSRC continued to provide free speech, language and reading screenings throughout 2011. CSRC completed 132 free screenings in 2011.

PROGRAM DESCRIPTIONS

CSRC presented eight social skills groups for children with autism and added another for children with motor speech disorders in addition to its existing individual, group and early literacy programs. A pilot outreach backpack project was implemented with three area preschools.

ACCOUNTABILITY

CSRC continues to participate in the Scottish Rite Foundation’s accountability project for child outcomes by administering the Child Development Inventory. Individual assessments of each child’s progress toward treatment plan goals and objectives, including standardized measures, were used at six month intervals during the child’s services. Parents responded to the Center’s satisfaction survey by rating of quality of service and their child’s progress. In 2011, results of the survey indicated a 94.55% overall approval rating.

LEADERSHIP

Children’s Speech and Reading Center staff and/or Board gave more than ten community presentations in 2011, including: the Masonic Lodges in Fort Collins, local Sertoma club, United Way, Avago, Woodward Fort Collins, Woodward Loveland and CSU Slice (Student Volunteers) Fair.





Also the CSRC Director presented at several local conferences. These presentations focused on how CSRC is serving needs of children with communication disorders in the Northern Colorado region and how the Scottish Rite Foundation of Colorado supports this mission. Additional activities included: May, 2011, CSRC Open House for families, community professionals and local educators to provide information about its programs; Training for staff and area professionals in “Introduction to Prompts for Restructuring Oral Muscular Phonetic Targets” (PROMPT) for childhood apraxia of speech and autism; Center Staff attended *Diagnosis of Childhood Apraxia of Speech* workshop.

ACKNOWLEDGEMENT

CSRC’s Board of Directors, the staff and families are grateful for the Scottish Rite Foundation of Colorado’s financial support. The Center has a unique role as the only free-standing, nonprofit agency serving children who present communication disorders in this Northern Colorado area. CSRC’s leadership strives to build and sustain a high-quality community resource through fundraising, donations, and grants. Most significantly, the Scottish Rite Foundation of Colorado’s philanthropy is unmatched in its focus and commitment to this effort. The annual funding and matching grant program from the Foundation has enabled the Center to provide affordable services to many children and, in turn, to promote the importance of diagnosis and treatment for childhood communication disorders.

Sincerely,

Kathy Mason
Executive Director
and

Sarah Markel, MA, CCC-SLP
Scottish Rite Foundation Program Manager

**SCOTTISH RITE FOUNDATION OF COLORADO
2011 ANNUAL REPORT**

STATISTICAL SUMMARY

In 2011, the Scottish Rite Foundation (SRF) helped 41 children receive therapy at the University of Colorado Boulder. The table below summarizes the type of services offered, number of children served, SRF contribution for each service, and average cost per child for these services.

Program	Number Served	SRF contribution	Average Cost per Child
Therapy, Individual	9	\$ 6,979	\$ 775
Therapy , Group	23	\$ 15,501	\$ 674
Perspectives, Group *	9	\$ 4,000	\$ 444
Parent Education	0	\$ 0	\$ 0
TOTAL (41)	41	\$ 23,000 *\$ 4,000	\$ 659

*\$4,000 Matching Grant from SRF applied to Perspective Group (description below).

PROGRAM DESCRIPTION

Innovations to our program were made possible this year given receipt of “matching grant” funding through the SRF matching grant process. Given this funding, a cooperative program was developed with the Temple Grandin School in Boulder County that serves school age children with ASD. The newly developed program, “Perspectives,” serving nine students has continued through fall semester. Yearly funding allocation from the SRF continues to support ongoing programs serving young children with communication challenges such as Story of Friendship, and enrollment in the Child Learning Center (CLC) toddler and preschool programs as well as individual and small group intervention.

ACCOUNTABILITY

The Rite Care Partnership at the University of Colorado is actively engaged in documenting child outcomes through the Child Development Inventory project specifically for the Scottish Rite Foundation of Colorado in addition to individualized measures for each child in our CLC programs. Portfolio documentation is shared with family members each semester the child is in our program, which includes formal and informal pre-and post assessment. Semester reports for all children in individual and group sessions are written and sent to family members with updated progress information and current assessment data included and explained.

LEADERSHIP

Faculty in SLHS continues to participate actively in local, regional, national, and international conferences and are recognized leaders of seminal research contributing to the knowledge base in speech language pathology and audiology. The SLHS programs at CU Boulder are currently ranked as 25th in the nation out of close to 400 programs. The department has also successfully addressed state personnel challenges by significantly increasing census of graduate students graduating from our programs.

In 2011, the CLC Outreach program provided ongoing consultation and coaching services to Head Start programs in Boulder County and area preschools and child care centers, thus increasing the impact of personnel preparation at the in-service level. The CLC Outreach faculty developed and implemented an outreach series of classes for Head Start teachers upon request in early language and literacy development and strategies for the classroom. Collaborative funding from Temple Hoyne Buell and The Rose Foundations supported these initiatives.

ACKNOWLEDGEMENT

The generous support of the Scottish Rite Foundation of Colorado is increasingly important. We are extremely grateful to the SRF as they provide a vital resource for families, enabling them to access services and supports for their children with communication challenges at the University of Colorado, Boulder. Also of incredible importance is the continuation of the SRF Scholarship Program which has financially supported two additional graduate students completing their studies this year. Our department in Boulder is very thankful for this resource for qualified candidates as it ensures the future of high quality services to young children and families in our state.

Respectfully Submitted,

Susan Moore, JD, MA, CCC-SLP
RiteCare Program Director



**THE SCOTTISH RITE FOUNDATION OF COLORADO
2011 ANNUAL REPORT**

The University of Northern Colorado (UNC) Speech-Language Pathology and Audiology Clinic provides educational opportunities to undergraduate and graduate students and offers diagnostic and intervention services across the age span to individuals with communication needs. Preschool children in Northern Colorado, who have speech, language, and hearing disorders receive intervention services through the generous support of the Scottish Rite Foundation (SRF) of Colorado.

STATISTICAL SUMMARY

Number of children served: 12

SRF dollars spent for service: \$7,645

Location of services: UNC Audiology and Speech Language Pathology Clinic

Program	# of Children	SRF Contribution	Average Cost Per Child
Individual Therapy	11	\$ 6,110	\$ 555
Group Therapy	2*	\$ 1,535	\$ 768
Parent Education		0	0
Total	12	\$ 7,645	\$ 637

*One child received both group and individual therapy and is only counted once.

PROGRAM DESCRIPTION

The Talking and Listening for Preschoolers (TALP) program has been ongoing since 2007. In order to meet the needs of the children being referred into this program, the coordinator/supervisor, in consultation with the faculty, modified the emphasis. The program primarily focuses on speech production (articulation and phonology) with a secondary language-literacy focus (development of vocabulary and concepts, oral and written sound and word awareness, comprehension and expression of narratives and stories). Children are in the program for 1 ½ hours twice weekly. The parents meet with our speech-language pathologist and graduate student clinicians to share information and learn about language development strategies.

The Speaking and Signing Stories (SASS) is offered in the summer and is designed for children who are deaf or hard of hearing. It is a literature-based program that targets all components of language through the use of both speech and American Sign Language.

Individual intervention services are available to children and their families.

ACCOUNTABILITY

The UNC Speech Language Pathology and Audiology Clinic professionals and their students monitor the progress of each child receiving speech-language intervention services. Prior to each semester (12-14 week sessions, 3 times per year), each child receives a pre-therapy file review, assessments as needed, and new goals and objectives are developed in consultation with the child’s family.





Progress is monitored and documented routinely and a detailed progress report is shared with the family at the conclusion of each semester. We document child outcomes through the Child Development Inventory project.

Professional relationships were maintained in 2011 with Weld School District 6, Thompson Valley R2J, the Centennial BOCES, the Poudre R1 School District, and Windsor School District RE-4. These collaborative efforts help to promote the availability of Scottish Rite Foundation funding in our community

The participation of graduate students to provide services to children enables these future professionals to develop skills necessary to become leaders in their own communities.

LEADERSHIP

- Two graduate students in speech-language pathology received scholarships from the Colorado Masons Benevolent Fund Association in 2011: Adrienne Zachary and Kate Finkenstadt. The students and their families attended the annual dinner and presentation of the awards. Their awards were also announced in the RiteView newsletter.
- Two graduate students each completed a thesis based on a qualitative study of the perceptions of parents and speech-language pathologist regarding early intervention.
- Findings and implications of the study were presented by Kathleen Fahey and Kathy Boada at the Intermountain Area Speech-Language and Hearing Conference (Salt Lake City) and the Metro Speech-Language Symposium (Denver).
- Drs. Julie Hanks and Tina Stoodly received a Scottish Rite Foundation matching grant for a grant received from Daniels Fund to further their work in providing services to children with cochlear implants.
- Kathleen Fahey, Ph.D. received the Scottish Rite Foundation Distinguished Service Award.

ACKNOWLEDGEMENT

The Scottish Rite Foundation of Colorado has significantly improved opportunities for many children and their families in Northern Colorado. It is so very important that clinics extend language intervention services to children who do not have the financial access to such services.

Program Goals for 2012:

1. Continue to offer services to children in communities in the northeastern area through advertisement
2. Increase the number of children served through SRF funding within the limits of our budget.
3. Follow up with community contacts to continue to build collaborative relationships.

Respectfully Submitted,

Kathleen Fahey, Ph.D.
RiteCare Program Director



SCOTTISH RITE FOUNDATION OF COLORADO 2011 ANNUAL REPORT

STATISTICAL SUMMARY

In 2011, the Scottish Rite Foundation (SRF) helped 38 children receive therapy at Memorial Hospital for Children. The table below summarizes the type of services offered, number of children served, SRF contribution for each service, and average cost per child for these services.

Program	Number Served	SRF contribution	Average Cost per Child
Therapy, Individual	35	\$48,756.20	\$1,393.03
Therapy, Group	6*	\$2,931.00	\$488.50
Parent Education	0	\$0	\$0
TOTAL	38	\$51,687.20	\$1,360.19

*Three children transferred from individual to group therapy; they are counted only once.

PROGRAM DESCRIPTION

Memorial Hospital for Children serves both inpatient and outpatient pediatric needs for the city of Colorado Springs. The pediatric outpatient clinic provides speech-language therapy services to children ranging in age from birth to 21 with a variety of diagnoses. Our facility is committed to serving children in locations convenient to families served. Currently, we provide services at outpatient clinics located in central and east Colorado Springs, as well as north Colorado Springs near the north hospital campus. Patients also have access to hippo therapy services with licensed therapists in cooperation with Pikes Peak Therapeutic Riding Center.

Our rehab staff consists of 17 speech-language pathologists, 15 physical therapists, 19 occupational therapists, and two audiologists. An outpatient manager oversees the staff, with two supervisors providing support for management. In addition, two developmental pediatric physicians participate in multiple specialty clinics, including Rehabilitation Clinic (in cooperation with Children's Hospital Colorado), Autism and Developmental Disorders Clinic, Infant Developmental Assessment Clinic, Cleft Lip and Palate Clinic, and Feeding Clinic. Patients also have access to modified barium swallow studies completed by a team including a speech-language pathologist, an occupational therapist, and a radiologist to address swallow safety.

ACCOUNTABILITY

Memorial Hospital for Children is actively engaged in documenting outcomes through the Child Development Inventory project, specifically for the Scottish Rite Foundation of Colorado, as well as individualized outcome measures for each child. Annual re-evaluations are also completed to measure the patient's clinical outcomes in a given time frame and to monitor progress. Memorial Pediatric Rehabilitation will implement the use of a Focus on Therapeutic Outcomes, Inc. (FOTO) outcome measurement to track therapeutic outcomes in all disciplines including occupational therapy, physical therapy, and speech-language therapy starting the second quarter of 2012.





LEADERSHIP

Memorial Pediatric Rehabilitation continues to bring courses to the Colorado Springs community for the education of therapists both within the Memorial Hospital for Children system and other professionals within the community. Courses and in-services offered this year to increase community cooperation and education include neurodevelopment training, seating and mobility education, gastroenterology and food allergy in-service, and augmentative communication trainings.

Memorial Pediatric Rehabilitation continues to offer specialized pediatric evaluation options not offered by many other local therapy sources including modified barium swallow studies to evaluate swallow structure and function, Autism and Developmental Disorders Clinic, Infant Developmental Assessment Clinic, and Cleft Lip and Palate Clinic.

Memorial also offers annual speech-language and hearing screenings, which are available at no cost to the Colorado Springs community. Following these screenings, referrals are made to families to appropriate medical, educational, or rehabilitation professionals.

ACKNOWLEDGEMENT

With the continued economic uncertainty experienced within our community, the Scottish Rite Foundation of Colorado remains an important resource for families in the Colorado Springs area to ensure that their children receive the services necessary for appropriate growth and development. Each year, families experience changes in insurance coverage, deductibles, and family budgets. Throughout those changes, the Scottish Rite Foundation has remained a consistent resource for continued speech-language therapy services that may not have otherwise been available to these patients. Although this rehabilitation facility and our patients did not require the full amount of the grant provided this year, we anticipate using a larger percentage of the grant in this upcoming year, due to the observed increases in deductible and co-pay amounts, as well as plans for initiating parent education programs to better serve our community.

We appreciate the unwavering support provided by the Scottish Rite Foundation of Colorado for our patients and families.

Respectfully submitted,

Ericka Wendorf, M.S., CCC-SLP
Deborah Camp, M.S., CCC-SLP
RiteCare Program Co-Directors

SCOTTISH RITE FOUNDATION OF COLORADO 2011 ANNUAL REPORT

STATISTICAL SUMMARY

In 2011, the Scottish Rite Foundation of Colorado (SRF) helped children receive therapy at Mountain View Therapy-Pediatrics at Montrose Memorial Hospital (MVTP). We have been frugal again this year with our funding, seeing many of our children in small group settings to help stretch our dollars. Although we have served fewer children this year, those seen were admitted earlier in the year into the RiteCare program. In addition, MVTP has not raised the charges for speech therapy since 2006. Since we place a high value on our partnership with the SRF there will not be a rate increase in 2012.

Program	Number Served	SRF contribution	Average Cost per Child
Therapy, Individual	42	\$62,323	\$1,484
Therapy , Group*	34	\$21,205	\$ 623
TOTAL	42	\$83,528	\$1,989

*Many children received both group and individual therapy; these children were only counted once in the total count of children served.

PROGRAM DESCRIPTION

MVTP provides speech–language therapy for a five county area with clinics in Montrose and Delta. The Montrose clinic is opened daily and now has limited services on Saturday. Delta clinic is opened four afternoons. We provided a 12-week summer speech-language-pragmatic program for school-aged children, preschoolers and toddlers. Social skill groups, led by a speech-language pathologist and occupational therapist, focused on community based activities and peer relationships. Summer program for the Delta site consisted of intensive speech-language therapy of four sessions per week for five weeks.

Thanks to the planning and forethought of the SRF and our program directors, MVTP was able to celebrate reaching the one million dollar mark in contributions this summer. Six hundred, thirty-five children have received assistance from the SRF since 1998 in our service area. We celebrated with a huge “Thanks a Million!” party, inviting all Masons in our service area, the hospital administration, Scottish Rite personnel from throughout the state and families of children who have received speech-language services since the program’s inception.

ACCOUNTABILITY

MVTP continues to participate in the statistical collection of data provided in the Child Development Inventory project for the SRF. We ensure that our services are consistent with community expectations by relying on:

- 1) accountability to the administration and physicians of MMH through electronic medical records.
- 2) standardized testing and retesting, observations and family home programs.
- 3) collaborative monthly meetings with the pediatrician’s office; monthly speech-language pathology, occupational therapy, and physical therapy team meetings; contact with other community resources that provide services to children.

LEADERSHIP

MVTP and the RiteCare program were recognized within our five county service area by a special color-printed leaflet mailed county wide, featuring three of our programs. The leaflet quoted parents and therapists including co-director Patti Anderson. The final feature article focused on the RiteCare program. It educated the community about the beginning of RiteCare in CO, speech-language deficits in children and local services.

We are a teleconference host site for Children's Hospital Colorado and the Colorado Speech-Language-Hearing Association. This provides continuing education opportunities for speech-language pathologists from our service area and Durango.

ACKNOWLEDGEMENT

Since the economy continues to impact families the support of the SRF is increasingly important. Certainly, individual effects of unemployment are devastating, but reductions in health insurance benefits for the employed also impact a family's ability to access therapy for their child. The majority of our children are on Medicaid, which provides limited dollars for therapy. Our families are grateful, as are we, for the continued commitment of the SRF to ensure that children with speech-language deficits receive needed therapy. These services provide each child and family with the groundwork for establishing communication that will last for a life time. In recognition of the wonderful commitment and partnership we have with the SRF we are again foregoing a rate increase for 2012.

Thank you for making a difference in the lives of children.

Respectfully submitted,

R. Jeneine Stevenson, MS, CCC-SLP
Patti Anderson, CCC-SLP
RiteCare Program Co-Directors



Banner Health

Sterling Regional[®]
MedCenter

SCOTTISH RITE FOUNDATION OF COLORADO 2011 ANNUAL REPORT

STATISTICAL SUMMARY

In 2011, the Scottish Rite Foundation (SRF) helped one child receive therapy at Sterling Regional MedCenter. The table below summarizes the type of services offered, number of children served, SRF contribution for each service, and average cost per child for these services.

Program	Number Served	SRF contribution	Average Cost per Child
Therapy, Individual	1	\$ 712.00	\$ 712.00
TOTAL	1	\$ 712.00	\$ 712.00

PROGRAM DESCRIPTION

Sterling Regional MedCenter, located in Northeast Colorado, offers acute care and out-patient rehabilitation services for adult and pediatric patients. Services are inclusive for Speech/Language Pathology, Occupational Therapy and Physical Therapy. Speech/Language services are provided on an individual basis and emphasize parent involvement and education during the sessions to achieve maximum carry-over of skills into the child's daily routines.

ACCOUNTABILITY

Speech Therapy goals are jointly established following identification of speech/language needs and use of baseline measurement procedures inclusive for use of the Child Development Inventory. Progress towards each child's developed goals is documented through the use of formal norm-referenced testing, informal observations and documented accomplishments during therapy sessions.

LEADERSHIP

Sterling Regional MedCenter employs one part-time speech-language pathologist who provides services throughout the community. Contact is well maintained between various agencies and service providers throughout the community to ensure optimal goal attainment, parental involvement and ease of transitions between agencies. The speech-language pathologist also attends continuing education workshops on an on-going basis to ensure therapy utilizes best practice methodologies.

ACKNOWLEDGEMENT

Sterling Regional MedCenter is grateful to the Scottish Rite foundation for their continued support in providing funding to families in Northeast Colorado. Although the Scottish Rite caseload is small, the foundation's funding remains an important resource to families in this community.

Respectfully Submitted,

Meryl Stern, MA, CCC-SLP
RiteCare Program Director



**SCOTTISH RITE FOUNDATION OF COLORADO
2011 ANNUAL REPORT**

STATISTICAL SUMMARY

In 2011, the Scottish Rite Foundation provided financial support for 88 children, to receive speech and language services in the Grand Junction areas, as well as Colbran, Parachute, Mesa and Paonia, Colorado. The table below summarizes the type of services provided, number of children served, the number of visits per service model, and the average cost per child for these services.

Program	Number Served	Scottish Rite Foundation Contributions	Average Cost per child
Individual or Group Therapy	88	\$153,256	\$ 1,742

PROGRAM DESCRIPTION

The St. Mary's Life Center RiteCare Speech Language and Literacy Program provided services, throughout the year, to children from 2 years to 7 years of age, and summer therapy services were provided to children up to 13 years of age. Children receiving services at St. Mary's are children with autism, developmental delays, hearing loss, dysfluency, voice disorders, apraxia, other oral motor disabilities, cleft palate, learning disabilities and those children needing augmentative communication. Therapy programs are designed to meet each individual's specific needs, delivered through individual therapy sessions and/or group therapy sessions. Services are provided by seven certified speech language pathologists.

ACCOUNTABILITY

The St. Mary's Speech and Language department is dedicated to ensuring children receive quality therapy programs. Our program participated in the statewide accountability project. Through this project parents are requested to complete a developmental inventory assessing the child's skill levels in the areas of: social interaction, language comprehension, expressive language, and fine and gross motor and general development. Parents complete this inventory upon entry into the program and every 6 months thereafter. The results of this inventory and results from other standardized tests are reviewed with families to confirm ongoing skill development as well as to develop therapy goals, home programs and provide parent education.

St. Mary's Hospital also participates in the Hospital Consumer Assessment of Healthcare Providers and Systems for Improving Care which reported the Speech and Language department patient satisfaction for 2011 to be at 90.39 percent.

LEADERSHIP

The St. Mary's Speech and Language Department staff not only contribute to our department and our hospital, many are involved in local and state wide organizations, including: Special Needs Advisory Committee, Interagency Counsel for the Child, The Diagnostic and Evaluation Clinic, Colorado Discoverability, School District Child Find Assessment Team, Cleft Palate Team of Western Colorado, Head & Neck Cancer Team, Children with Special Needs Task Force, Colorado Home Intervention

Programs Facilitation, Dyslexia Family Support Group, Mesa County Partnership for Children and Families, The Colorado Speech and Hearing Association, and The American Speech-Language Hearing Association.

ACKNOWLEDGEMENT

The Scottish Rite Foundation has provided financial support for children to access speech-language and learning programs in Grand Junction for the past 25 years. Since 1996, The Scottish Rite Foundation has contributed \$2,538,164 for services to 1,955 children in Grand Junction and surrounding areas. The Foundation has also contributed \$56,000 for therapy materials and equipment. Your enduring support over the past 25 years has been remarkable. You have directly enriched the lives of many children and their families and indirectly enriched our community. For this we say "Thank You."

We are looking forward to 2012, with goals to:

- Advance our knowledge and expertise in current technology which supports communication and learning skills.
- Explore methods of funding for parent education programs
- Celebrate our 25 years of partnership with the Scottish Rite Foundation of Colorado

Respectfully Submitted

Amy Brophy-Neilsen, MS, CCC-SLP
RiteCare Program Director



SCOTTISH RITE FOUNDATION OF COLORADO 2011 ANNUAL REPORT

STATISTICAL SUMMARY

In 2011, the Scottish Rite Foundation of Colorado (SRF) helped two families participate in speech-language pathology programs at Arkansas Valley Regional Medical Center (AVRMC). The table below summarizes the services provided:

PROGRAM	NUMBER SERVED	SRF CONTRIBUTION	AVERAGE COST PER CHILD
Individual therapy	2	\$ 5,040	\$ 2,520
TOTAL	2	\$ 5,040	\$ 2,520

PROGRAM DESCRIPTION

The program at AVRMC is part of the outpatient rehabilitation clinic. Our clinic is small with only one full-time speech-language pathologist on staff and one part-time speech-language pathologist working four to six hours per week. Over the past year, our clinic has continued to have an increase in the number of children referred and receiving speech-language pathology services. The program in our area that previously provided speech-language services for infants and preschool children no longer has a speech-language pathologist on staff. Our clinic is currently the only source for referral and treatment of these children.

ACCOUNTABILITY

The rehabilitation department at AVRMC participates in on-going departmental evaluations for quality assurance with focus on customer satisfaction, quality of treatment and use of evidence-based treatment techniques. We use patient surveys to assess the patient's (or parent's) satisfaction with the program. We also utilize the Global Rating of Change (GROC), which is a patient's (or parent's) assessment of progress, upon discharge.

LEADERSHIP

In the community, our full-time therapist also serves as a volunteer consultant for the Arkansas Valley Hospice Association, providing speech, language or swallowing evaluations and treatment as needed at no charge.

ACKNOWLEDGEMENT

At Arkansas Valley Regional Medical Center, it is a privilege to participate with the Scottish Rite Foundation of Colorado and the scholarship program. We are thankful that the SRF scholarships are available to provide assistance for families with limited resources. Our number of participants in the Scottish Rite Foundation scholarship program is small when compared to other programs, but the opportunity to provide treatment to children who have no other source of funding is greatly appreciated.



Our goal for 2012 continues to focus on increasing community awareness of the Scottish Rite Foundation's scholarship program and continuing to expand the services we are able to provide for the children in our area.

Thank you for continuing to include Arkansas Valley Regional Medical Center as part of the Scottish Rite Foundation of Colorado programs. We are grateful for your continued support.

Respectfully Submitted,

Carol L. McEntyre, MS, CCC-SLP
RiteCare Program Director



SCOTTISH RITE FOUNDATION OF COLORADO 2011 ANNUAL REPORT

STATISTICAL SUMMARY

In 2011, (from August 15, 2010 to August 31, 2011) the Scottish Rite Foundation (SRF) helped 150 children access the Treasure Chest Program through The Piñon Project – Cortez. The table below summarizes the location of services and number of children served at each location. The SRF contributed \$53,520 for this program resulting in an average program cost of \$ 356.80 per child served.

Program	Number Served
Treasure Chest – Cortez	
Cortez Library	11
Children’s Kiva	15
Trinity Lutheran Preschool	5
Por Dia Preschool	11
Pinon Project-TreeHouse	30
Pinon - PAT/Even Start	13
Pinon – Other	7
Treasure Chest – Dolores	
Teddy Bear Preschool	24
Dolores Library	12
Treasure Chest- Mancos	
Mancos Head Start	7
Treas.Chest Dove Creek	
Seventh St. Preschool	8
Doves Nest	7
TOTAL	150

PROGRAM DESCRIPTION

With support from the Scottish Rite Foundation, during the 2010-2011 school year, the Treasure Chest program expanded to several new sites: Dolores Library, Trinity Lutheran Preschool, Por Dia Preschool, Children’s Kiva and the summer reading program at Dove Creek’s children’s library which is part of the elementary school. At the beginning of the 2011/2012 school year, a parent education class using treasure chests was presented to kindergarten parents at Kemper Elementary School in Cortez. The theme chests were also being used in trainings with preschool teachers at the Ute Mountain Ute Tribe in Towaoc, CO by the school readiness coordinator with the local Early Childhood Education Council.

ACCOUNTABILITY

The largest number of children served by the Treasure Chest program is enrolled in local preschool programs. The preschool programs provide developmental screening upon entry to preschool and at the end of the school year. The Tree House Child Development Center at The Piñon Project in Cortez uses Teaching Strategies Gold, from Creative Curriculum.





This evaluation tool is being used by most other area programs and school districts for follow up evaluation into early elementary school. Children participating in the Treasure Chest Program and enrolled at Tree House for the 2010/2011 school year showed consistent growth in areas of language and literacy. Teacher and parent observations provided positive confirmation of the benefits of the children's participation in the program. In one example, a child in the Head Start classroom who started the year with significant language delays had reached levels of language and literacy skills of his peers and for his age level by the end of the school year. The use of Treasure Chest theme tubs complemented the services this child received at school in the classroom and from other sources (speech therapy). The lead teacher for this Head Start classroom is enthusiastic about the benefits to students with individualized educational plans (IEP) that use of the treasure chests may offer. We hope to observe similar positive gains shown by her students who have IEPs and are using the theme chests this 2011/2012 school year.

LEADERSHIP

Karen Winchester continues as the Treasure Chest Program Coordinator. Kellie Willis is the Program Coordinator and Diana Buza is the Executive Director of The Piñon Project. As of September 2011, Karen Winchester has been working with The Piñon Project's Even Start and Parents As Teachers Program Coordinator Lynn Soukup, to provide more individual parent instruction with Treasure Chest theme tubs through home visits and other contacts with parents participating in these programs. These groups serve parents of children ages 0-3 primarily, but also can include expectant mothers. This connection allows us to more easily introduce the use of the theme chests to parents of infants from the very beginning, including prenatally.

ACKNOWLEDGEMENT

The Treasure Chest Program in Cortez owes its existence historically, currently and in the future to the Scottish Rite Foundation's generous annual donations and matching grants. SRF has been and still is the primary funding source for the Treasure Chest Program. The generous funding has allowed us to not only continue the program but to add new resources and replace worn or unusable materials. We have been able to add several new themes with new materials to the theme chests offered. Being able to deliver the program in Cortez as well as bring it to other sites, has allowed us to reach children and their families in a variety of ways, due to the variety of programs and connections for parents at The Piñon Project. In this way, Treasure Chest theme tubs are used to promote family literacy, parent-child engagement and school readiness as well as connecting parents and children to other vital services for families (developmental screenings, assistance with access to health services, financial literacy, preschool and child care, supervised visitation, referrals to other community programs and services).

We are truly grateful to the Scottish Rite Foundation to be able to offer the Treasure Chest program to our community through The Piñon Project.

Respectfully Submitted,

Karen Winchester
Treasure Chest Program Coordinator



SCOTTISH RITE FOUNDATION OF COLORADO 2011 ANNUAL REPORT

STATISTICAL SUMMARY

In 2011, the Scottish Rite Foundation (SRF) helped 39 families, 64 children, access the Treasure Chest Program through Rocky Mountain SER Head Start Program. The table below summarizes the number of children served, age range and number of families on the waiting list. The SRF contributed \$25,000 for this program as well as contributing an additional \$2,000 to match a grant from Target. The SRF contributed a total of \$27,000 resulting in an average program cost of \$422.00 per child served.

Age Range (years)	Children Served	Families Waiting for Availability
0 – 2.5	23	
3 – 5	41	
Total	64	88

PROGRAM DESCRIPTION

With support from the Scottish Rite Foundation, the Treasure Chest Program provides education and training for children and their families (siblings and parents) in a home based environment. The Treasure Chest Program provides early identification and intervention for children with possible developmental delays. The child's development is screened and reviewed with parents. Additionally, school readiness is supported through early learning within the home.

The Treasure Chest Tubs are composed of developmentally appropriate materials that help strengthen every child's growth and development. Each tub contains activities that are based on common themes.

Participation by the parents is an essential component of this program. The Early Literacy Coordinator will review the materials with the parents once a month, during their scheduled home visits. The parents then guide their children through these activities.

ACCOUNTABILITY

Each child 3-5 years old receives a developmental screening upon entering preschool. Results of that screening are compared to a follow-up screening at the end of the program year. Data from these assessments are compiled to show consistent growth in language and school readiness as measured by the DIAL 3 (Developmental Indicators for the Assessment of Learning).

The results for the 2011/2012 Dial 3 pre-assessment for the twenty nine children who do not have individualized educational plans (IEP) are shown in the graph on page two. The children who do have an IEP are being assessed by St. Mary's Life Center Speech and Language Department and the Mesa County School District #51 Child Find. Of the 41 children currently enrolled and assessed, 12 children have been identified and have received an IEP.



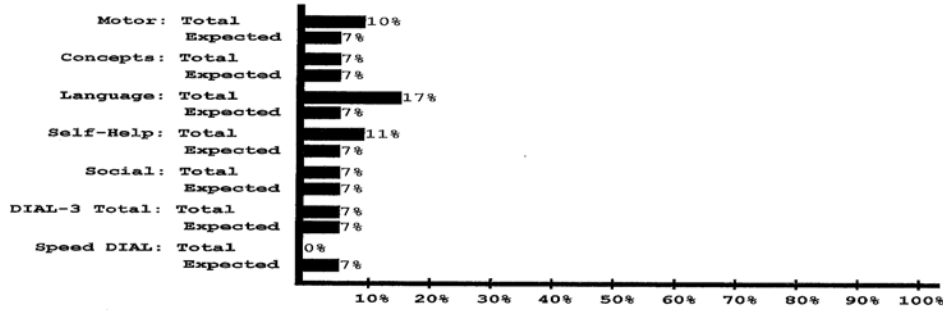
02/06/2012

DIAL-3 ASSIST *pre Assessment*

Developmental Indicators for the Assessment of Learning-Third Edition

Group Summary 7% Cutoff

	Motor	Concepts	Language	Self Help	Social	DIAL-3 Total	Speed DIAL
Total Number Tested:	29	29	29	28	28	29	0
Total Potential Delay:	3	2	5	3	2	2	0
Total Percent Potential Delay:	10%	7%	17%	11%	7%	7%	0%



COPYRIGHT 1998, AMERICAN GUIDANCE SERVICE, INC., CIRCLE PINES, MN 55014-1796

LEADERSHIP

Rose Owens, Disabilities and Mental Health Coordinator, has been working diligently with School District #51 and St. Mary's Life Center to identify more children that need services for speech and language delays.

The Treasure Chest Program encourages our families who have children with speech and language delays to visit with Amy Brophy-Neilsen, MS, CCC-SLP with St. Mary's Life Center, to inquiry about additional speech services.

ACKNOWLEDGEMENT

The success of the Treasure Chest Program is due to the continued interest, funding and support of the Scottish Rite Foundation of Colorado.

Respectfully Submitted,

Carmen Marsh
Treasure Chest Program Coordinator