

Helping Children Communicate!



2011 State of the Foundation Report

Scottish Rite Foundation of Colorado
a 501(c)(3) public charity
www.scottishritefoundation.org



**Message from the
Sovereign Grand Inspector General
in Colorado, Grand Chancellor for the
Supreme Council – Southern Jurisdiction
of the Scottish Rite, and President of the
Scottish Rite Foundation of Colorado**

**The Honorable
Stephen M. Munsinger, 33^o**

I am pleased to present the 2011 State of the Foundation Report for the Scottish Rite Foundation of Colorado – commonly referred to as Colorado RiteCare. This report summarizes our work with childhood language disorders giving special focus on the performance of our eleven speech-language partners in Colorado. The Foundation's work is an important way in which Masons help the community through the Masonic teaching of charity.

At the end of 2011 our net assets totaled \$20.5 million. During the year we distributed \$1.1 million in grants to our RiteCare partners – monies which helped make it possible for children to receive speech-language care.

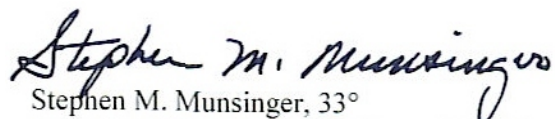
Three significant items regarding our work in 2011 are worthy of special mention.

- ✓ Colorado RiteCare enabled 954 children to receive speech-language services in 20 communities.
- ✓ Colorado RiteCare and the Masonic Fraternity awarded \$20,000 in scholarships – four \$5,000 scholarships for graduate work in speech-language pathology.
- ✓ Colorado RiteCare's overhead rate for the period 2009-2011 is 5.6%.

This report provides information about this remarkable program of service to Colorado families. As you review these pages please keep in mind that about 10 percent of all children are at-risk for some type of speech-language disorder. Whether it be delayed speech development, autism, dyslexia, or many of the other speech-language disorders, Colorado RiteCare remains faithful to its mission and vision of striving to provide every child in Colorado with speech-language disorders the opportunity to receive treatment and care.

On behalf of our Trustees, we are honored to be committed to this work and to be associated with our outstanding partners who deliver the speech-language services. We all thank our many supporters and friends for helping make this work possible – now and in the future.

Sincerely,



Stephen M. Munsinger, 33^o
Sovereign Grand Inspector General in Colorado



WHAT WE DID IN 2011

Scottish Rite Foundation of Colorado

1370 Grant Street

Denver, Colorado 80203-2347

303-861-2410

www.scottishritefoundation.org

RiteCare Service Profile

- ▶ \$32.7 million spent on speech-language services between 1953 and 2011 - \$1.1 million in 2011
- ▶ 20 Colorado communities served by 11 RiteCare partners with our financial support
- ▶ 16,243 children served to date



CHILDREN
SERVED IN 2011

954 children

Denver and
North/Northeast
515 children

Colorado Springs and
South/Southeast
95 children

Grand Junction and
West/Southwest
344 children

Our Donors Make This Work Possible

- ▶ 2011 donor gifts totaled \$1,132,630
- ▶ More than \$793,000 raised towards meeting the Architects of Care Fundraising campaign's goal of \$1 million - **helping the Foundation advance speech therapy and related services in Colorado**

The Scottish Rite Foundation of Colorado completed 58 years of service in 2011

Overhead Rate of 5.6% for 2009-2011

The Scottish Rite Foundation of Colorado is a 501(c)(3) public charity, managed by a 7-member Board of Trustees. The Sovereign Grand Inspector General in Colorado - Honorable Stephen M. Munsinger, 33° - serves as its President and Chief Executive Officer.

Table of Contents

	<u>Page</u>
Introduction	1
Scottish Rite Foundation of Colorado Governance and Management	2
Scottish Rite Foundation of Colorado Mission	3
Scottish Rite Foundation of Colorado Vision	3
Rite Care Partners	4
Clinical Therapy Programs	4
Early Language Development Programs	4
Highlights of the Year 2011	5
Children Served	6
Grants and Expenditures in Support of Colorado RiteCare	6
Financial Trends	7
Net Assets Chart (2000-2011)	8
Grant Distributions as a Percent of Net Assets Chart (2000-2011)	8
Grants Budget Chart (2000-2012)	9
Grant Distributions Chart (2000-2011)	9
Fundraising Accomplishments in 2011	10
Recognition of Special Friends of the Foundation	10
Special Award Recipients	11
Graduate Student Speech-Language Pathology Scholarship Recipients	13
RiteCare Society Members	15
Foundation Fellows	16
Exhibits	17
Exhibit A – Audited Statement of Financial Position	18
Exhibit B – Audited Statement of Activities	19
Exhibit C – Comparison of Recent Three-Year Financial Trends	20
Exhibit D – Recap of RiteCare Children Served in Colorado	21
Exhibit E – Outcomes Evaluation of Children’s Developmental Progress	22
Exhibit F – Selected Highlights from Individual Partner Programs	24
Children’s Hospital Colorado – Aurora	24
Children’s Hospital Colorado Therapy Center – Pueblo	25
St. Mary’s Life Center – Grand Junction	26
Memorial Hospital for Children – Colorado Springs	27
Montrose Memorial Hospital – Montrose	27
University of Northern Colorado – Greeley	28

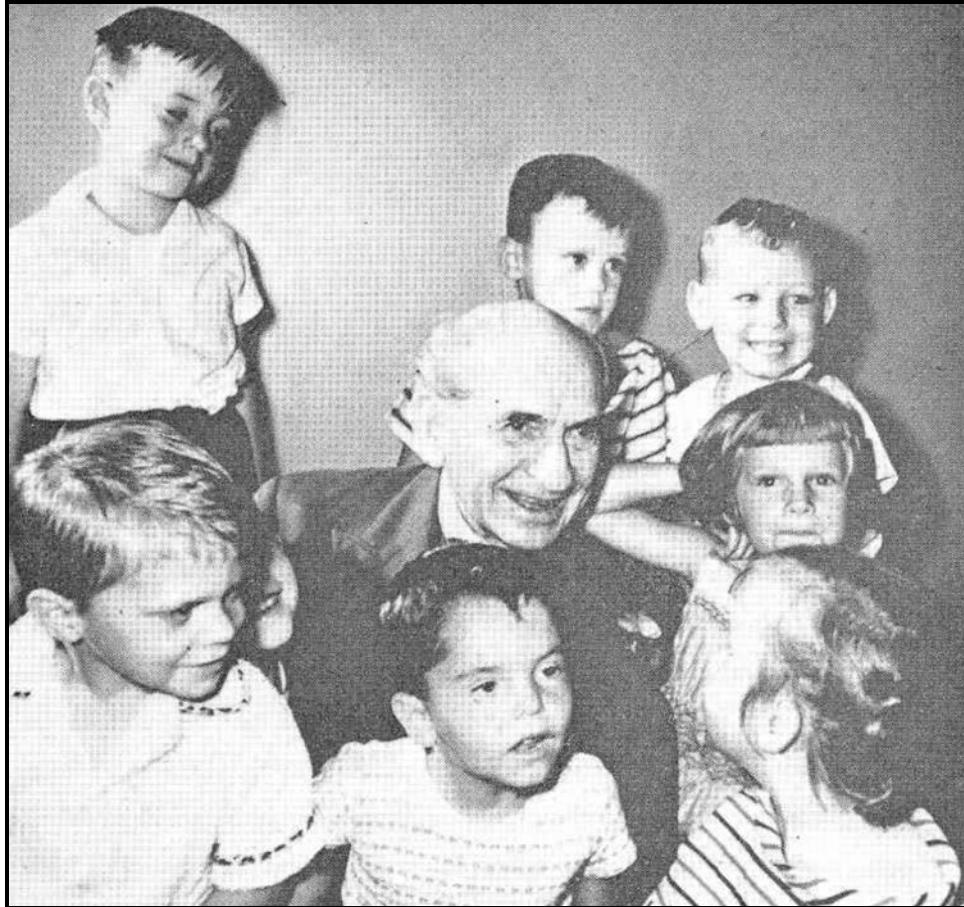
Table of Contents (continued)

	<u>Page</u>
University of Colorado – Boulder	29
Children’s Speech and Reading Center – Fort Collins	30
Sterling Regional MedCenter – Sterling	30
Arkansas Valley Regional Medical Center – La Junta	30
The Piñon Project – Cortez	31
Western Slope Head Start – Grand Junction	31
Exhibit G – Scottish Rite Foundation and RiteCare Partner Contacts	32

**Home and Birthplace
of the Scottish Rite Foundation of Colorado**



**Denver Consistory
Ancient and Accepted Scottish Rite of Freemasonry
1370 Grant Street
Denver, Colorado**



**Judge Haslett P. Burke and RiteCare Children
ca 1953
The Children's Hospital**

Judge Burke was then-Sovereign Grand Inspector General in Colorado and the first president of the Scottish Rite Foundation of Colorado. At the time the Judge served on the Colorado Supreme Court, having been a former Chief Justice on several occasions.

2011 State of the Foundation Report

Introduction

The Scottish Rite Foundation of Colorado (Foundation) was established in 1953 by Scottish Rite Masons in Denver, Colorado as a not-for-profit corporation. The Foundation is approved by the Internal Revenue Service as a IRS Code Section 501(c)(3) public charity. The IRS approval letter, issued in 1954, was reissued in August 2006.

The Foundation was established to provide financial assistance to help families of children with language disorders receive clinical therapy treatment. This is now known nationally and in Colorado as the RiteCare Childhood Language Program. The Colorado RiteCare Program is the first program of its kind in the United States. Since 1953, all States in the Southern Jurisdiction of the Scottish Rite – to which Colorado belongs and which includes 35 States and the District of Columbia – have each organized a RiteCare Childhood Language Program. The Scottish Rite Foundation of Colorado is also a leader in the field by being one of the first organizations in the United States to promote speech and language therapy for preschool-age children.

The Foundation employs no professional caregivers and has no clinical infrastructure. All therapy and related services are provided by professionally qualified and certified speech-language pathologists and learning specialists. The Foundation provides grants to partner organizations to defray the costs that would otherwise be charged to families. The partners are community-based organizations most of which are not-for-profit hospitals.



**Founding Father
William G. Schweigert, 33°**

Financial assistance applications are made directly to the partner clinic by the applying family and are jointly reviewed by the clinic director and a Foundation committee appointed specifically for this purpose by the President of the Foundation's Board of Trustees. The Foundation's appraisal philosophy affirms the importance of family participation by financially contributing to the care of their child, even though the family's contribution may be minimal. The determination of the amount of the Foundation's financial assistance is based on a graduated scale related to family income and

need. In addition, the assistance is provided after all other sources of financial support are exhausted.

The Foundation's operational characteristics include:

1. Comprehensive speech-language therapy services
2. Community-based partners
3. Statewide coverage
4. Professionally certified speech pathologists employed by partnering organizations
5. Focus on preschool-age children
6. Professionally managed RiteCare clinics, centers, and Foundation operations
7. Overhead cost efficiency

Speech therapy and related services are delivered by nationally certified speech-language pathologists, learning specialists, and related professionals. Certification requires a graduate college degree in the specialty field. More than 100 speech pathologists and learning specialists are employed by the Foundation's partners in Colorado. Each partnering organization has established credentialing requirements for its professional staff of caregivers.

Service is typically provided to children with disabilities – without regard to race, color, religion, gender, or national origin. Disabilities may include language delay, hearing loss, cleft lip and palate, autism spectrum disorder, Down syndrome, brain injury, dyslexia, voice disorders, fluency dysfunction and other disorders of speech and language development.

Scottish Rite Foundation of Colorado Governance and Management



L to R: Vern Ingraham, Lee Schlessman, Steve Munsinger, Karl Hinkle, Rick Frohlick, Deborah Hayes, Gerry Ford, John Groves, Tom Magnuson

The Foundation is governed by a seven-member Board of Trustees which establishes policy and overall guidance for Foundation operations. The Board receives no compensation for time spent and services provided. At December 31, 2011, the Board consisted of the following individuals.

- Stephen M. Munsinger, President (Denver)
- John W. Groves, Vice President (Grand Junction)
- Lee E. Schlessman, Treasurer (Denver)
- Gerald A. Ford (Arvada)
- Richard G. Frohlick (Denver)
- Thomas R. Magnuson (a Longmont resident currently managing a bank in Kansas)
- Karl J. Hinkle (Colorado Springs)

The day-to-day operations of the Foundation are the responsibility of the Executive Secretary, Vernon B. Ingraham (Denver).

The Foundation's flagship partner is Children's Hospital Colorado (Children's Colorado). Since 1953 grants to Children's Colorado totaled \$24.5 million (75 percent of all grants awarded by the Foundation). Deborah Hayes, Ph.D., chairs the Department of Audiology, Speech Pathology, and Learning Services at Children's Colorado. Since 1983 she has occupied this position and, as such, serves as an ex officio member of the Foundation's Board of Trustees. In 2003 the Foundation completed a \$2 million fundraising campaign to establish the *Kelley Family/Schlessman Family Scottish Rite Masons Chair in Childhood Language Disorders* at Children's Hospital Colorado. Dr. Hayes occupies this distinguished chair and as such has responsibility for coordinating all Foundation-supported RiteCare operations in Colorado.



**RiteCare Child
Memorial Hospital
Colorado Springs**

In addition, the Board has two standing committees to provide support for Foundation operations. These are the Finance Committee and the Long Range Planning Committee. The Finance Committee, comprised of three Trustees and one adhoc member (Executive Secretary), meets quarterly with the Foundation's investment portfolio managers. The Long Range Planning Committee, consisting of three Trustees and two adhoc members (Dr. Hayes and the Executive Secretary), meets at least annually to review and recommend strategic planning initiatives for the Board of Trustees' consideration. In 2011 the Foundation's administrative overhead rate was 6.6 percent (after adjustment – see Exhibit C), a direct reflection of the Board's stewardship and the operational efficiency of the RiteCare Childhood Language Program.

Scottish Rite Foundation of Colorado Mission

The mission of the Scottish Rite Foundation of Colorado, as officially endorsed by the Board of Trustees, is to “enhance the quality of life for Colorado’s children and their families by supporting high quality, collaborative programs for the prevention and treatment of childhood language disorders.” The Foundation accomplishes this by:

1. Providing sustaining support to children, families, and communities for the prevention and treatment of childhood language disorders.
2. Helping partner-programs provide speech, language, and learning therapy for children; parent education; and family and community language enrichment programs.
3. Supporting student and professional education and training.

Scottish Rite Foundation of Colorado Vision

The vision of the Scottish Rite Foundation of Colorado, as officially endorsed by the Board of Trustees, is to “ensure that all Colorado children with language disorders have the opportunity to receive treatment and care.”

RiteCare Partners

In 2011 the Scottish Rite Foundation of Colorado provided grants to 11 organizations providing either clinical therapy programs or early childhood language development programs. See Exhibit D for children served by each organization and Exhibit G for a list of Scottish Rite Foundation and RiteCare partner addresses and phone numbers. The partners who delivered services in 2011 include the following organizations.

Clinical Therapy Programs (listed in order by organization type and length of partnership)

Six hospital-based programs

- 1) Children's Hospital Colorado – Aurora, Denver Metro Area, & Pueblo
- 2) St. Mary's Life Center – Grand Junction
- 3) Memorial Hospital for Children – Colorado Springs
- 4) Montrose Memorial Hospital – Montrose
- 5) Sterling Regional MedCenter – Sterling
- 6) Arkansas Valley Regional Medical Center – La Junta

Two university-based programs

- 1) University of Northern Colorado – Greeley
- 2) University of Colorado – Boulder

One not-for-profit agency – Children's Speech and Reading Center – Fort Collins

Early Language Development Programs (listed in order by length of partnership)

Two not-for-profit preschool programs

- 1) The Piñon Project – Cortez
- 2) Western Slope Head Start – Grand Junction



RiteCare Partner Main Office Locations



RiteCare Child
RiteCare Director Amy Brophy-Neilsen
St. Mary's Life Center, Grand Junction



RiteCare Child
Speech-Language Pathology Graduate Student
University of Northern Colorado

The 2011 clinical therapy programs were offered at partnership locations including satellite clinics of certain partners – totaling 16 communities: Aurora, Boulder, Colorado Springs, Delta, Fort Collins, Grand Junction, Greeley, La Junta, Littleton, Loveland, Montrose, Parker, Pueblo, Ridgway, Sterling, and Westminster.

The 2011 early (preschool-age) language development programs were offered at partnership locations including associated preschool programs in outlying locations – totaling five communities: Cortez, Dolores, Dove Creek, Grand Junction, and Mancos.

Highlights of the Year 2011

The year 2011 was highly successful with regard to the work of the Scottish Rite Foundation of Colorado and its RiteCare Childhood Language Program. See Exhibit F for a summary of partner annual report highlights. Foundation highlights for the year include:

1. Providing services to 954 children with financial support from the Scottish Rite Foundation of Colorado including speech therapy and/or related services for 740 children and early language and literacy services (Treasure Chest Program) for 214 children.
2. Awarding four scholarships of \$5,000 each to second-year graduate students at the University of Colorado – Boulder and the University of Northern Colorado. Scholarships funded by the Foundation are awarded in the name of Dwight A. Hamilton, former Sovereign Grand Inspector General in Colorado and former President of the Foundation. Scholarships funded by the Colorado Masons' Benevolent Fund Association are given in the name of the Association. This is the main charitable arm of the Masonic Grand Lodge of Colorado which has partnered with the Foundation in this work since 2003.
3. Conducting outreach programs in partnership with the following RiteCare clinics: Children's Hospital Colorado in Aurora, St. Mary's Life Center in Grand Junction, UNC in Greeley, and CU in Boulder. This included discussions with speech-language pathology graduate students at both universities as well as presentations to Scottish Rite Reunion Classes in Denver, Colorado Springs, and Grand Junction.

4. Participating in special fundraisers for the Foundation such as the Pints Pub Scotch Tasting fundraiser – the fifth year this fundraiser has been generously hosted by Pints Pub in Denver.

Children Served

Since the Foundation's beginning in 1953, 16,243 children have been served through its RiteCare partners. For the 12 months ended December 31, 2011, the Foundation served 954 children in Colorado. See Exhibit D for more details.

	<u>2011</u>	<u>2002 - 2011</u>	<u>1953 - 2011</u>
Denver and North/Northeast Colorado	515	4,013	11,582
Grand Junction and West/Southwest Colorado	344	2,620	3,339
Colorado Springs and South/Southeast Colorado	<u>95</u>	<u>812</u>	<u>1,322</u>
Total Children Served	<u>954</u>	<u>7,445</u>	<u>16,243</u>

The RiteCare program directors evaluate children's progress throughout Colorado by means of the Child Development Inventory. Based on an inventory of progress of 1,072 RiteCare children since the evaluation's inception in 2002, the most robust developmental gains are noted in the area of social-communicative behaviors. See Exhibit E for details.

Grants and Expenditures in Support of Colorado RiteCare

In 2011 grants to the RiteCare clinics/centers totaled \$1,070,646 representing 3.3 percent of total grants since 1953 and 5.2 percent of net assets as of December 31, 2011 (see Exhibit A).

	<u>2011</u>	<u>Inception - 2011</u>
Children's Hospital Colorado – Aurora	\$ 398,058	\$ 23,231,179
Children's Hospital Colorado Therapy Center – Pueblo	146,036	1,231,092
Parkview Hospital – Pueblo	-0-	970,644
St. Mary's Life Center – Grand Junction	153,687	2,579,011
Memorial Hospital for Children – Colorado Springs	51,687	1,471,313
Montrose Memorial Hospital – Montrose	83,528	1,059,749
Sterling Regional MedCenter – Sterling	713	13,276
Arkansas Valley Regional Medical Center – La Junta	5,040	29,996
University of Northern Colorado – Greeley	11,645	192,365
University of Colorado – Boulder	27,000	119,141
Children's Speech & Reading Center – Fort Collins	112,233	1,224,600
The Piñon Project – Cortez	54,020	409,420
Western Slope Head Start – Grand Junction	27,000	187,000
Let's Talk! Speech Therapy – Canon City	-0-	588
Total Program Support	<u>\$ 1,070,646</u>	<u>\$ 32,719,373</u>

In 2011 the statewide average annual cost-per-child for therapy-related services was \$1,332 – a strong investment with substantial returns in language and communication development. Through our investment in their future, many children with disabilities such as language delay,

hearing loss, cleft lip and palate, autism spectrum disorder, Down syndrome, brain injury, dyslexia, voice disorders, fluency dysfunction, and other disorders of speech and language development received help that might not otherwise have been available.

Financial Trends

Total program expenditures in support of the Colorado RiteCare Childhood Language Program include, in addition to speech therapy and related services, the following: (1) Endowed Chair at Children’s Hospital Colorado, (2) Capital Improvements such as the Early Language Intervention Room at the University of Northern Colorado and the Speech Therapy Group Room at Children’s Hospital Colorado, (3) Equipment purchases for various clinics, and (4) the Graduate Scholarship awards. These expenditures are summarized as follows.

	<u>2011</u>	<u>2002 - 2011</u>	<u>Inception - 2011</u>
Speech Therapy and Related Services	\$1,070,646	\$ 13,343,243	\$ 29,793,258
Kelley Family/Schlessman Family Scottish Rite Masons Chair in Childhood Language Disorders	-	2,000,000	2,000,000
Group Therapy Room Special Projects		255,948	255,948
Equipment for Clinic Therapy Programs	-	100,000	670,167
Graduate Scholarships in Speech Pathology	<u>20,000</u>	<u>110,000</u>	<u>110,000</u>
Total Program Expenditures	<u>\$1,090,646</u>	<u>\$ 15,809,191</u>	<u>\$ 32,829,373</u>

The Program Grants expenditures in the audited financial statements total \$1,090,993. Included in this category, but not shown listed above, are expenditures for selected clinics in sponsoring holiday receptions for clinicians, RiteCare children, and parents including the gift of age-appropriate books to the children. Total support for this function in 2011 was \$347.

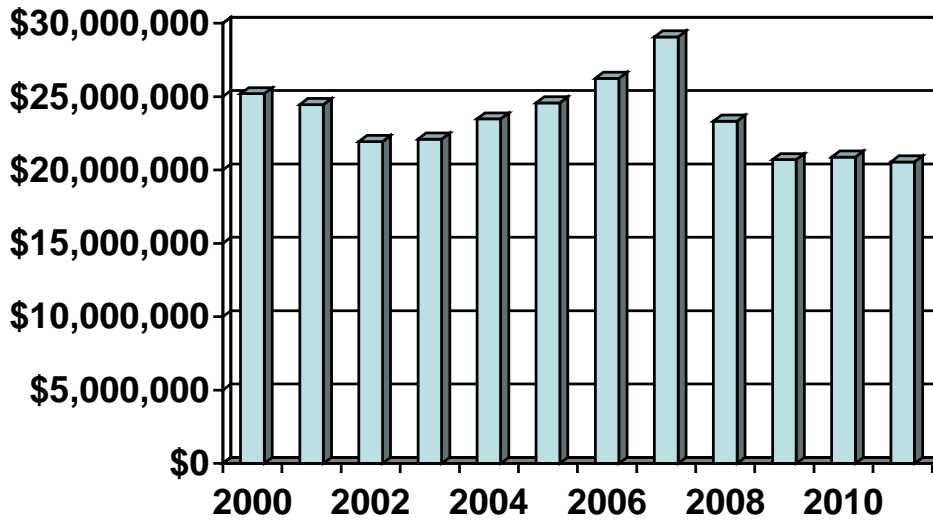
During 2001-2011, the Foundation’s net assets ranged from a low of \$20.5 million at the end of 2011 to a record high of \$29.1 million at the end of 2007. See Exhibits A and B for the 2011 audited financial statements.



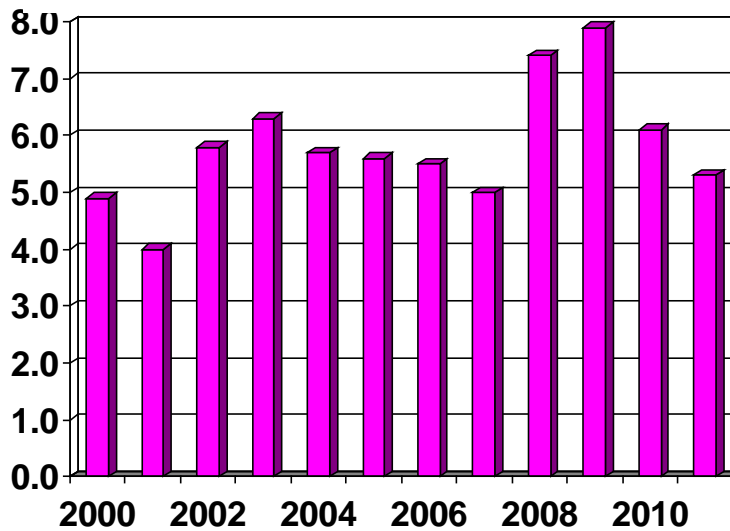
**RiteCare Child in technology session
Talking with Technology Camp**

The following charts present trends since 2000 for grant budgets, grant distributions, and the end-of-year net asset base. They illustrate the Board of Trustees' dedication to sustaining support for Colorado RiteCare.

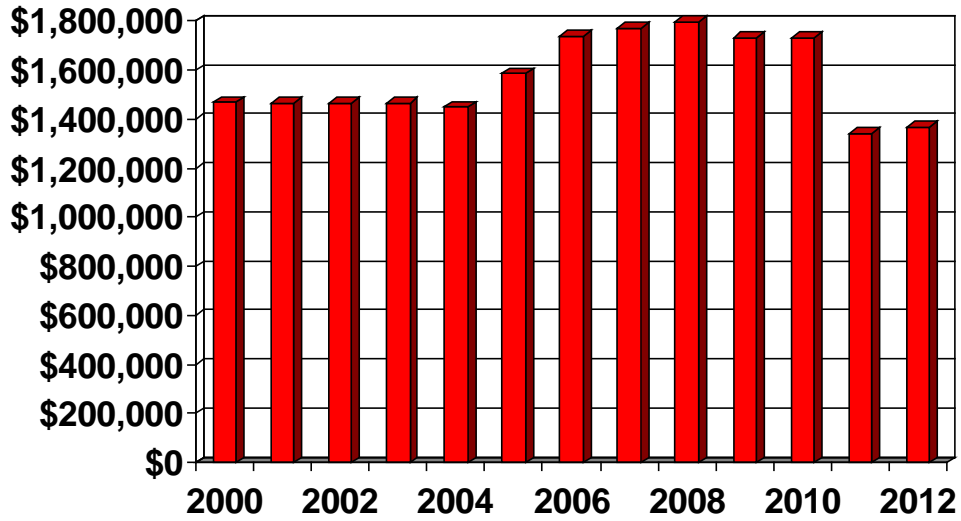
Net Assets 2000-2011



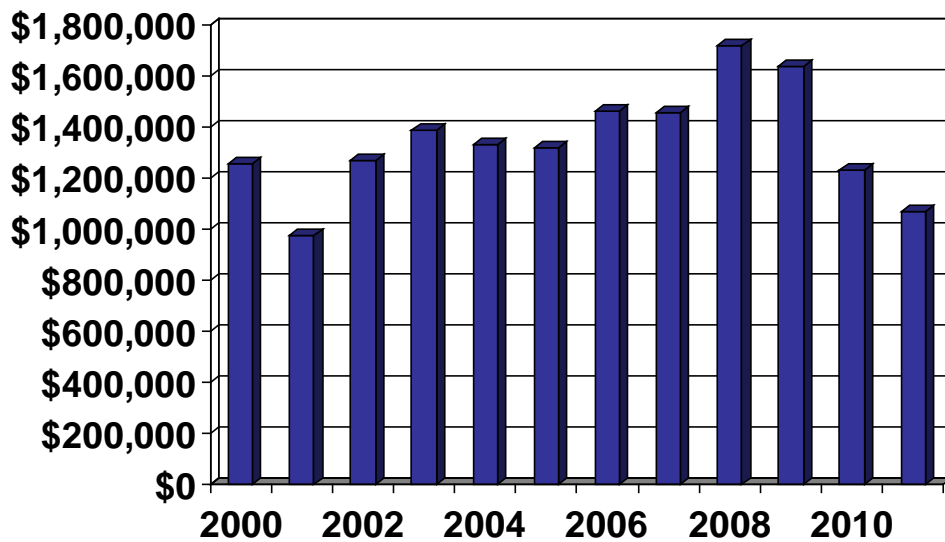
Grant Distributions as a Percent of Net Assets 2000-2011



Grants Budget 2000-2012



Grant Distributions (based on actual billings) 2000-2011



Fundraising Accomplishments in 2011

In 2011 the Foundation received cash gifts and donations totaling \$1,132,630. The amount below (\$410,036) in the Temporarily Restricted Gifts column in the Estates and Trusts category is the appraised value of land received through an estate. This is further discussed in note b on Exhibit A.

	<u>Total Gifts</u>	Temporarily Restricted Gifts	Unrestricted Gifts
Estates and Trusts	\$ 993,675	\$ 410,036	\$ 583,639
Individual Donations	114,705	24,377	90,328
Non-Masonic Organizations	<u>24,250</u>	<u>0</u>	<u>24,250</u>
	<u>\$ 1,132,630</u>	<u>\$ 434,413</u>	<u>\$ 698,217</u>

Temporary restrictions typically pertain to several purposes including certain gifts designated for the Architects of Care fundraising campaign; gifts designated for the Talking with Technology Camp and the First Steps Camp; and gifts for the Early Language Intervention Program (Treasure Chest Program).

The 2011 annual appeal drive generated a high participation rate and a record drive with \$83,000 being received. In addition, at the end of 2011 the Architects of Campaign fundraising campaign had generated \$793,000 in gifts since the campaign began in the summer of 2008 just before the market crash. Shortly thereafter the campaign was suspended and not reactivated until early 2011. The Foundation is working on successfully completing the campaign by the end of 2013, meeting the campaign goal of \$1.0 million.

Recognition of Special Friends of the Foundation

The Scottish Rite Foundation of Colorado is deeply grateful to its many friends for their support in helping children with language disorders. Between January 2000 and December 2011 more than 3,900 financial gifts were made to the Foundation. Hundreds of donors are annually helping to make the Foundation's mission and vision become a reality for thousands of children in the future.

Several categories of the Foundation's friends are worthy of special mention. These individuals include:

- Honors of the Foundation Award Recipients
- Distinguished Service Award Recipients
- Graduate Student Speech-Language Pathology Scholarship Recipients
- RiteCare Society Members
- Foundation Fellows

Special Award Recipients

The Scottish Rite Foundation of Colorado presents two major awards in recognition of individuals and/or organizations that have helped to make a difference.

The highest award is the “Honors of the Foundation.” Its purpose is to recognize individuals whose contributions have significantly enhanced the work of the Foundation. The award is presented to either Masons or non-Masons whose personal philanthropy, dedicated leadership, and/or sustaining support have enabled the Foundation to achieve its mission and vision. A suitable trophy is presented to the recipient.

The second highest award is the “Distinguished Service Award.” Its purpose is to recognize individuals or groups who contribute time or talents to improving services in RiteCare programs. The award is presented to either Masons or non-Masons whose contributions in time and/or talents have significantly improved the operations of the Foundation or care of children in the RiteCare programs.

Honors of the Foundation

2004	John I. Ladd, 33°
2005	Dwight A. Hamilton, 33°
2006	William D. Hewit, 33°
2007	Bruce A. Kelley The Rollie R. Kelley Family Foundation Kathryn Kelley Huwaldt The Rollie R. Kelley Family Foundation Barbara J. Kelley The Rollie R. Kelley Family Foundation
2008	George, 32° KCCH, & Neva Frohlick Deborah Hayes, Ph.D. Kelley Family/Schlessman Family Scottish Rite Masons Chair in Childhood Language Disorders, Children’s Hospital Colorado
2009	Ben M. Crossno, 33°
2010	Lee E. Schlessman, 33°, Grand Cross

Distinguished Service Award

2004	Denver Consistory Ladies
2005	John S. Russell, 33°
2006	Ashley S. Buss, 32° KCCH
2007	Sandra D. Morrison Vice President, Children's Hospital Colorado Foundation
	Valerie Hernandez Special Assistant to Deborah Hayes, Ph.D. Children's Hospital Colorado
2008	Norman L., 33°, & Juanita Hoff James L. Nunn, 33°
2009	Virginia Howey Director, The Piñon Project
	Otsie Stowell, 32° KCCH
2010	James L. Martin III, Ph.D. Foundation Webmaster
2011	Kathleen Fahey, Ph.D. UNC RiteCare Director
	Southern Colorado Scottish Rite Masons

Graduate Student Speech-Language Pathology Scholarship Recipients

The graduate scholarship program assists second-year graduate students in speech-language pathology complete their education. It also encourages (but cannot require) them to seek employment in Colorado. Through 2011, 32 scholarships totaling \$160,000 have been awarded.

In 2003 the Colorado Masons' Benevolent Fund Association, in collaboration with the Foundation, initiated a graduate scholarship in speech-language pathology. The Association is the main charitable arm for the Most Worshipful Grand Lodge of Ancient Free and Accepted Masons of Colorado. Between 2003 and 2011 the Association awarded 18 scholarships totaling \$90,000.

In 2005 the Scottish Rite Foundation of Colorado initiated a graduate scholarship in speech-language pathology. This scholarship is named in honor of former Sovereign Grand Inspector General and President of the Foundation, Dwight A. Hamilton. Between 2005 and 2011 the Foundation awarded 14 scholarships totaling \$70,000.

In addition, a national scholarship in speech-language pathology was awarded to four Colorado graduate students by the *Supreme Council* of the Ancient and Accepted Scottish Rite of Freemasonry for the Southern Jurisdiction. This scholarship is known as the Sam and Millie Hilburn Scholarship in the field of Childhood Language Disorders. A total of \$25,000 has been awarded.

Sam and Millie Hilburn Scholarship (Supreme Council) in the field of Childhood Language Disorders

2001	Vindi Wells	University of Northern Colorado
2005	Marybeth Ames	Ph.D. Candidate & Speech Pathologist at Children's Speech & Reading Center in Fort Collins
2010	Rebecca L. McNeil	University of Colorado
2010	Christina D. Wilkins	University of Colorado

Dwight A. Hamilton Scottish Rite Foundation Graduate Scholarship in Speech-Language Pathology

2005	Joni M. Oldroyd	University of Colorado
2005	Rachael E. Glustrom	University of Colorado
2006	Amy M. Mulligan	University of Colorado
2006	Laura M. Wilson	University of Colorado
2007	Danielle K. Cavallaro	University of Colorado
2007	Amanda Vargo	University of Colorado
2008	Laura K. Jordan	University of Northern Colorado
2008	Jennifer M. Leggette	University of Colorado
2009	Kimberly A. Turner	University of Colorado
2009	Meghan K. Fitzgerald	University of Colorado
2010	Rebecca L. McNeil	University of Colorado
2010	Hannah L. Shippey	University of Colorado
2011	Jocelyn R. Essler	University of Colorado

2011

Loriann Schwartz

University of Colorado

**Colorado Masons' Benevolent Fund Association
Graduate Scholarship in Speech-Language Pathology**

2003	Kyle R. Weber	University of Northern Colorado
2003	Mandy J. Hansen	University of Northern Colorado
2004	Brianne Lay	University of Northern Colorado
2004	Marie R. Pechous	University of Northern Colorado
2005	Jill Emeson	University of Northern Colorado
2005	Sara E. Rode	University of Northern Colorado
2006	Kristine D. Leedy	University of Northern Colorado
2006	Rachel K. Moore	University of Northern Colorado
2007	Lindsey Greer	University of Northern Colorado
2007	Adrianna Ackerman	University of Northern Colorado
2008	Jennifer Wiedmeier	University of Northern Colorado
2008	Sara N. Robinson	University of Northern Colorado
2009	Kristin M. Michie	University of Northern Colorado
2009	Alyssa J. Winbourne	University of Northern Colorado
2010	Natasha Maria	University of Northern Colorado
2010	Elisabeth A. Robertson	University of Northern Colorado
2011	Catherine C. Finkenstaedt	University of Northern Colorado
2011	Adriane N. Zachary	University of Northern Colorado



**Audiology, Speech Pathology and Learning Service Management Team
at Children's Hospital Colorado**

RiteCare Society Members

The RiteCare Society was established by the Scottish Rite Foundation of Colorado in 2007 as an association of former and current volunteers who support the work of the Foundation. Society membership is earned by volunteering the equivalent of 30 hours in service to the Foundation. Current Society members are listed below according to Scottish Rite's organizational structure in Colorado.

RiteCare Society Members

Valley of Denver

Fran Adams
Kay Applegate
Robert W. Applegate, 33°
Virginia Arner
Wayne G. Arner, 33°
Esther M. Bartholic
Robert L. Bartholic, 33°
Carol Bowser
Rosie Anderson Brandel
Milton Brandwein, 33°
Ashley S. Buss, 32° KCCH
Phyllis Campbell
Marie Cox
G. Robert Dinkel, 32° KCCH
Lula Ellsworth
Donald L. Emarine, 33°
Glenita Emarine
Gerald A. Ford, 33°
Richard G. Frohlick, 33°
Donna Glasscock
James W. Glasscock, 33°
Robert W. Gregory, 33°
Tiz Hamilton
Ruth Harlan
Deborah Hayes, Ph.D.
Judi Hessel
Michael E. Hessel, 33°
Valerie Hernandez
Juanita Hoff
Norman L. Hoff, 33°
Vernon B. Ingraham, 33°, Grand Cross
Charles G. Johnson, 33°
Judi Lehman
Thomas R. Magnuson, 33°
June McMullen
Stephen M. Munsinger, 33°, SGIG

Robert F. "Trey" Perrin, 32° KCCH
Claudene Preston
John S. Russell, 33°
Lee E. Schlessman, 33°, Grand Cross
Richard W. Schmidt, 33°
Donald F. Schultz, 33°
Jack M. Shepard, 32° KCCH
David D. Swift, 33°
JoAnn VanTrump

Valley of Colorado Springs/Pueblo

David K. Ashley, 32°
Robert M. Burr, 33°
William W. Chinn, 33°
David L. Coberly, 33°
Gordon R. Cooper, 33°
Ben M. Crossno, 33°
Kennard D. Henry, 33°
Kate Leyda
J. R. "Jack" McConnell, 33°
Michael L. McMillan, 33°
Donald A. Noffsinger, 32°
James L. Nunn, 33°
Donald C. Phillips, 33°
James A. Stivers, 33°
Gerome Walton, 32°
Elizabeth Woodman
Jack A. Woodman, 33°

Valley of Grand Junction

Richard S. Carnett, 32° KCCH
Thomas J. Cox, 33°
John W. Groves, 33°
Donald A. Hobbs, 33°
Rodney W. Johnson, 33°
James L. Smith, 33°

Eileen Naiman
Alice Norris

Rex Swanson, 32°

Foundation Fellows

A Foundation Fellow is a distinguished designation for an individual who makes a monetary contribution to the Scottish Rite Foundation of Colorado of \$10,000 or more. It is open to all donors regardless of Masonic membership or affiliation.

Foundation Fellows

Robert L. Bartholic, 33°
Esther M. Bartholic
Richard S. Carnett, 32° KCCH
James E. Duncan, 33°
Susan M. Duncan
George A. Frohlick, 32° KCCH
Neva C. Frohlick
Robert W. Gregory, 33°
Deborah Hayes, Ph.D.
James L. Martin, III, Ph.D.
John R. Hendrickson, 33°
William D. Hewit, 33°
Betty Ruth Hewit
Vernon B. Ingraham, 33°, Grand Cross
Bruce A. Kelley
Barbara J. Kelley
Kathryn Kelley Huwaldt
Thomas L. Redditt, Sr., 33°
Elinor P. Redditt
Leon C. Rittenhouse, 32°
Lee E. Schlessman, 33°, Grand Cross
Dolores J. Schlessman
Irving O. Shuel, 32° KCCH
Betty L. Shuel
Roger A. Wainwright, 32°
Ernest O. West, 32°



Dolores and Lee Schlessman with Deborah Hayes (center)

Exhibits

The following Exhibits provide additional information on Foundation activities in 2011.

Exhibit A – Audited Statement of Financial Position

Exhibit B – Audited Statement of Activities

Exhibit C – Comparison of Recent Three-Year Financial Trends

Exhibit D – Recap of RiteCare Children Served in Colorado

Exhibit E – Outcomes Evaluation of Children’s Developmental Progress during Therapy

Exhibit F – Selected Highlights from Individual Partner Programs 2011 Annual Reports

Exhibit G – Scottish Rite Foundation and RiteCare Partner Addresses & Phone Numbers

EXHIBIT A

Audited Consolidated Statement of Financial Position

Scottish Rite Foundation of Colorado

December 31, 2011

Assets

Cash and cash equivalents:			
Unrestricted	\$	1,313,213	
Temporarily restricted		<u>15,022</u>	\$ 1,328,235
Interest receivable			65,658
Pledges receivable			5,000
Accounts receivable			13,082
Investments			18,350,429
Fixed assets, net			4,931
Land held for investment			410,036
Beneficial interest in split-interest agreements			<u>858,196</u>
 Total Assets			 <u>\$ 21,035,567</u>

Liabilities and Net Assets

Accounts payable and accrued liabilities	\$	169	
Grants payable		<u>490,478</u>	
 Total liabilities			 \$ 490,647
 Net assets:			
Unrestricted	\$	19,137,219	
Temporarily restricted		<u>1,407,701</u>	
 Total net assets			 <u>20,544,920</u>
 Total liabilities and net assets			 <u>\$ 21,035,567</u>

Note a: The Scottish Rite Foundation of Colorado requires its annual financial statements to be audited by an independent certified public accountant. An annual IRS form 990 is also prepared. The auditing firm in 2011 was Marrs, Sevier & Company, LLC. The auditors expressed a clean opinion on the 2011 financial statements in their letter to the Board of Trustees dated July 27, 2012. The auditors' report including the audited financial statements and the IRS form 990 are permanently on file in the Foundation office. These documents are available for public review upon request.

Note b: The consolidated financial statements include the financial statements of the Foundation and its wholly owned subsidiary RiteCare LLC, a sole member limited liability company, which holds the Foundation's land held for investment. All transactions and balances between the entities have been eliminated in consolidation. During 2011 the final steps were completed in receiving a parcel of land bequeathed to the Foundation. The land, consisting of 1,569 acres of dry agricultural land located in Cheyenne County, Colorado, is subject to a life estate lease which will remain in effect until the death of the current tenant.

EXHIBIT B

Audited Consolidated Statement of Activities

Scottish Rite Foundation of Colorado

Year ended December 31, 2011

	Unrestricted	Temporarily Restricted	Permanently Restricted	Total
Support and revenue:				
Investment income:				
Interest and dividends	\$ 441,433			\$ 441,433
Other investment income	8,491			8,491
Realized gains	267,443			267,443
Unrealized losses	(1,492,099)			(1,492,099)
Donations and memberships	698,217	\$ 434,413		1,132,630
Change in split interest agreements		37,132		37,132
Donations released from restrictions	<u>171,885</u>	<u>(171,885)</u>		
Total support and revenue	553,669	299,660	-	853,329
Expenses:				
Program grants - Annual	1,090,993			1,090,993
Management and general	89,149			89,149
Fundraising	<u>5,369</u>			<u>5,369</u>
Total expenses	1,185,511	-	-	1,185,511
Change in net assets	(631,842)	299,660		(332,182)
Net assets at beginning of year	<u>19,769,061</u>	<u>1,108,041</u>	<u>-</u>	<u>20,877,102</u>
Net assets at end of year	<u>\$ 19,137,219</u>	<u>\$ 1,407,701</u>	<u>\$ -</u>	<u>\$ 20,544,920</u>

Note a: See Note a in Exhibit A.

Note b: See Note b in Exhibit A.

EXHIBIT C

Comparison of Recent Three-Year Financial Trends

The average administrative overhead rate for the three-year period 2009-2011 was 5.6%. The 2011 administrative overhead rate was 7.5% due to one-time expenditures pertaining to acquisition of land bequeathed to the Foundation and being held for investment. The 2011 administrative overhead rate, excluding this expense, was 6.6%. The overhead rate is calculated by dividing the total general and administrative overhead expense by the total expense which includes grants and fundraising costs.

Scottish Rite Foundation Financial Recap (based on audited financial statements) 2011

Grants to Partners	\$1.1 million
Donations Received	\$1.1 million
Children Served	954
Overhead Rate (adjusted)	6.6%

Scottish Rite Foundation Financial Recap (based on audited financial statements) 2009-2011

Grants to Partners	\$4.0 million
Donations Received	\$1.5 million
Children Served	3,223
Overhead Rate	5.6%



RiteCare Children - Montrose Memorial Hospital

EXHIBIT D

Recap of RiteCare Children Served in Colorado				
Partner	Geographic Area of Colorado	First Year of Active Partnership	Children Served Since Partnership Inception	Children Served in 2011
Clinic Programs – Service Area: Denver Metro, North, and Northeast Colorado				
Children’s Hospital Colorado – Aurora	Denver Metro Area	1953	10,411	290
Children’s Speech & Reading Center – Fort Collins	North	1998	821	171
University of Northern Colorado – Greeley	North	2001	121	12
Sterling Regional MedCenter – Sterling	Northeast	2006	18	1
University of Colorado – Boulder	North	2007	211	41
Total Children Served in Service Area			11,582	515
Clinic Programs – Service Area: South and Southeast Colorado				
Children’s Hospital Colorado Therapy Center – Pueblo (clinic operation assumed by Children’s Hospital Colorado in 2001)	South	1987	832	55
Memorial Hospital – Colorado Springs	South	1997	470	38
Arkansas Valley Regional Medical Center – La Junta	Southeast	2006	19	2
Let’s Talk! Speech Therapy – Cañon City	South	2006 (discontinued in 2007)	1	0
Total Children Served in Service Area			1,322	95
Clinic Programs – Service Area: West and Southwest Colorado				
St. Mary’s Life Center – Grand Junction	West	1986	1,226	88
Montrose Memorial Hospital	West	1998	406	42
Total Children Served in Service Area			1,632	130
TOTAL CLINIC PROGRAM CHILDREN SERVED			14,536	740
Early Language Development Programs – Service Area: West and Southwest Colorado				
The Piñon Project – Cortez	Southwest	2000	1,316	150
Western Slope Head Start – Grand Junction	West	2005	391	64
Total Early Language Development Program Served			1,707	214
TOTAL RITECARE CHILDREN SERVED			16,243	954

EXHIBIT E

Outcomes Evaluation of Children's Developmental Progress during Therapy

The Outcomes Evaluation was implemented statewide in 2002 to measure a RiteCare child's development in a variety of areas including social skills, expressive language and language comprehension. It was initiated by Dr. Deborah Hayes and Martha Drake, Manager, Children's Hospital Colorado Therapy Center – Pueblo, a satellite clinic of Children's Hospital Colorado. As of December 31, 2011, the inventory database includes 1,072 children.

The evaluation is based on parental assessment of a child's development by standardized questionnaire, *Child Development Inventory*. Parents know their child best. A parent's perspective and priorities are invaluable to planning therapy. Thus, this input is critical to assessing a child's progress during therapy.

Measures include comparing children's developmental age in each domain (e.g., expressive language, language comprehension, social skills, etc.) with their chronological age. If the child's developmental age is equivalent to his/her chronological age, his/her developmental quotient is 100. Typically developing children have developmental quotients in all domains ranging from 85 to 115.

On the average, children enrolled in the Foundation's clinical program show developmental delay, most pronounced in the language domains of expressive language, language comprehension, and social skills. The most robust developmental gains for children enrolled in therapy are in the area of social skills. Most social skills items in the inventory relate to social-communicative behaviors (e.g., "asks for help" . . . "understands 'wait a minute'" . . . "talks about how to do" . . . "makes excuses" . . .).

Children who enter Foundation clinical programs with less significant delays in the language domains show progress within six to 12 months of therapy. These youngsters are typically discharged from therapy when they approach the normal range of developmental quotients.

Children who enter Foundation clinical programs with the more significant delays in the language domains make slow, steady progress and may remain in therapy for up to two years.

The following chart summarizes outcome results for social skills development for the children who have been discharged from therapy divided into "short term" versus "long term" patients. Short term patients typically need 12 months or less of therapy to make significant gains. Long term patients typically require up to two years of treatment to "catch up" to their typically developing peers. The chart shows that short term patients make rapid gains in social skills and approach the range of normal development (85 to 115) within one year of therapy. Long term patients make slower gains but also approach the range of normal development within two years of therapy.



Photo courtesy of RiteCare Program: Memorial Hospital Pediatric Rehabilitation Services – Colorado Springs ©2012

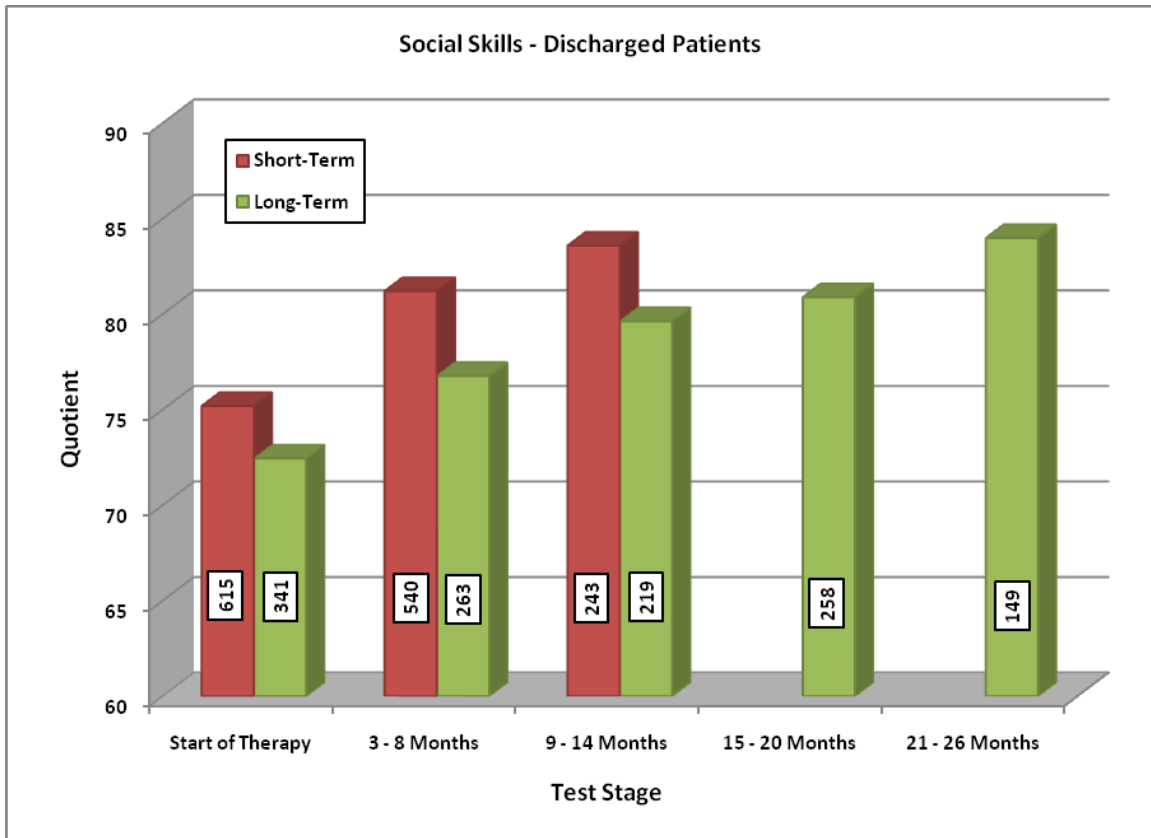


EXHIBIT F

Selected Highlights from Individual Partner Programs 2011 Annual Reports

Children's Hospital Colorado Aurora & Denver Area Network of Care



Children's Hospital Colorado at Anschutz Medical Campus, Aurora, Colorado
(Source: Children's Hospital Colorado)

1. Two hundred ninety (290) children received speech therapy and treatment at Children's Hospital Colorado and its Denver Metro Area clinics with Scottish Rite Foundation financial assistance. These children ranged in age from less than one year through school age, with the majority of children in the age range of three through six years.
2. Sixty-three (63) children received multidisciplinary cleft palate clinic evaluations.
3. Twenty-six (26) children and siblings attended the *Talking with Technology Camp* – a week-long mountain camp program for children and young people who use computerized communication devices. In addition to the Scottish Rite Foundation of Colorado, the *Rollie R. Kelley Family Foundation* provided generous financial support for this camp. The 2011 camp was the 25th consecutive year for the camp which is held annually near Empire, Colorado.
4. Fourteen (14) children, five siblings, and ten parents participated in a family-centered, parent-education group to enhance communication skill development in their young child. This special program, *First Steps*, is a weekend learning experience for families considering assistive communication technology for their young child. The *Rollie R. Kelley Family Foundation* provided generous financial support for this program.



**The Rollie Kelley Children – Kathryn, Barbara, and Bruce
The Rollie R. Kelley Family Foundation members**



**Boy and Trainer
Talking with Technology Camp**

**Children’s Hospital Colorado Therapy Center – Pueblo
(a Network of Care clinic of Children’s Hospital Colorado)**

1. Fifty-five (55) children received speech therapy and treatment with financial assistance from the Scottish Rite Foundation. Children from the local Pueblo area as well as children living as far away as Creede and Monte Vista received services at the Pueblo clinic.
2. The clinic has a speech therapist in training to be an augmentative-alternative communication specialist and consultant working with children requiring an electronic communication device.
3. Clinic staff provided consultation and parent education services to the *Soaring Eagles Center for Autism*. The RiteCare clinic director, Martha Drake, serves on the Center’s Board of Directors.

St. Mary's Life Center – Grand Junction



St. Mary's Life Center

1. Eighty-eight (88) children received speech-language services with financial assistance from the Scottish Rite Foundation. Children served throughout the year were between the ages of 2 to 7 years. Children up to 13 years of age were served in the summer programs. Children were from the following communities: Grand Junction, Colbran, Parachute, Mesa and Paonia.
2. Children receiving services at St. Mary's are children with autism, developmental delays, hearing loss, dysfluency, voice disorders, apraxia, other oral motor disabilities, cleft palate, learning disabilities and those children needing augmentative communication.
3. St. Mary's Speech and Language Department staff, in addition to serving children at the Life Center and Hospital, are involved in several local and statewide organizations including: Special Needs Advisory Committee, Interagency Counsel for the Child, The Diagnostic and Evaluation Clinic, Colorado Discoverability, School District Child Find Assessment Team, Cleft Palate Team of Western Colorado, Head & Neck Cancer Team, Children with Special Needs Task Force, Colorado Home Intervention Programs Facilitation, Dyslexia Family Support Group, Mesa County Partnership for Children and Families, The Colorado Speech and Hearing Association, and The American Speech-Language Hearing Association.

Memorial Hospital for Children – Colorado Springs



Memorial Hospital Rehabilitation Clinic at Printer's Park

1. Thirty-eight (38) children received speech-language services with financial assistance from the Scottish Rite Foundation. Services are provided at three locations in Colorado Springs: the main facility at Printer's Park Medical Plaza, the Powers clinic in east Colorado Springs, and the Briargate clinic near the North Hospital campus.
2. Annual speech-language and hearing screenings are offered at no cost to the Colorado Springs community.
3. The program continues to be dedicated to the following specialized services: Autism and Developmental Disorders Clinic, Cleft Lip and Palate Clinic, Feeding Clinic, Infant Development Clinic, and Rehabilitation Clinic

Montrose Memorial Hospital – Montrose



**Clinic Staff with Masons and Dr. Hayes
attending Rehab Clinic open house**

1. Forty-two (42) children were served with financial assistance from the Scottish Rite Foundation. Therapy services were provided in a five county area with clinics in Montrose and Delta.
2. Special summer programs were offered for school age children, preschoolers, and toddlers. The Delta site summer program consisted of intensive speech-language therapy of four sessions per week for five weeks.

University of Northern Colorado – Greeley



Gunter Hall, UNC Campus - Home to the RiteCare Clinic

1. Twelve (12) children were served with financial assistance from the Scottish Rite Foundation of Colorado.
2. UNC's Speech-Language Pathology and Audiology Clinic provides training for graduate students by giving services under supervision during their entire academic program.
3. The *Talking and Listening for Preschoolers* program, on-going since the summer 2007 with support from the *Daniels Fund* and Scottish Rite Foundation which collaborated in helping develop this program. The program focuses on speech production (articulation and phonology) with a secondary language-literacy focus (development of vocabulary and concepts, oral and written sound and word awareness, comprehension and expression of narratives and stories). Children are in the program for 1½ hours twice weekly. The parents meet with the speech-language pathologist and graduate student clinicians to share information and learn about language development strategies.
4. The *Speaking and Signing Stories* program, which also began in the summer of 2007 as a result of the *Daniels Fund*/Scottish Rite Foundation collaboration, provides therapy for children who are deaf or hard-of-hearing. It is a literature-based program that targets all components of language through the use of both speech and American Sign Language.

University of Colorado – Boulder



Speech-Language Hearing Center - CU-Boulder Campus

1. Forty-one (41) children were served with financial assistance from the Scottish Rite Foundation.
2. CU's Speech Language and Hearing Center on the Boulder campus provides training for graduate students by giving services under supervision of certified clinical faculty during their entire academic program.
3. The Center's focus is to identify and serve young children and their families in Boulder County and surrounding areas who may not otherwise receive speech and language therapy due to a lack of funding for therapeutic services.
4. The *Story of Friendship* program focuses on specific communication and language learning needs of children with autism spectrum disorder (ASD) in the natural context of their school environment and incorporates peers as friends. It is a community-based program housed at Creekside Elementary School in the Boulder Valley School District.
5. The Space Camp and Space Exploration programs offer special services for children identified with Asperger's Syndrome and their friends – focusing on the specific language, communication, and language learning needs of children identified with ASD.
6. A new program, *Perspectives*, was initiated in 2011 with a “matching grant” from the Scottish Rite Foundation of Colorado. This is a cooperative program with the Temple Grandin School in Boulder County that serves school age children with ASD. In 2011 nine children participated in the program.

Children's Speech and Reading Center – Fort Collins



Two Children at the CSRC Clinic

1. One hundred seventy-one (171) children were served with financial assistance from the Scottish Rite Foundation. Forty-nine (49) children received speech-therapy services and 122 children received early literacy services in area preschools.
2. Free speech-language and reading screens were offered on an on-going basis with families coming from the communities such as Fort Collins, Loveland, Greeley, Estes Park, Johnstown, Berthoud, Windsor, and Wellington.
3. The Center provided a variety of individual and small group programs for early childhood communication and reading readiness.

Sterling Regional MedCenter – Sterling

1. One child was served with financial assistance from the Scottish Rite Foundation.
2. Speech/Languages services are provided on an individual basis and emphasize parent involvement and education during the sessions to achieve maximum carry-over of skills into the child's daily routines. The Scottish Rite Foundation of Colorado remains committed to making its services available for this clinic partner.

Arkansas Valley Regional Medical Center – La Junta

1. Two children were served with financial assistance from the Scottish Rite Foundation of Colorado.
2. This center is the only hospital or clinic in the southeastern Colorado area (on the Highway 50 corridor east of Pueblo) that provides speech-language pathology services for children, except in the school setting. The Scottish Rite Foundation of Colorado remains committed to making its services available for this clinic partner.

The Piñon Project – Cortez

1. One hundred fifty (150) children were served with financial assistance provided by the Scottish Rite Foundation.
2. The program funded by the Scottish Rite Foundation is known as the Treasure Chest Program, a preschool-age early language development program. It serves needy and low income children in southwestern Colorado and is in great demand by families of preschoolers.
3. The Treasure Chest Program was conducted at the following locations: Cortez (Cortez Library, Children’s Kiva, Trinity Lutheran Preschool, Por Dia Preschool, and The Pinon Project), Dolores (Teddy Bear Preschool and Dolores Library), Dove Creek (Seventh St. Preschool and Doves Nest), and Mancos (Mancos Head Start).
4. In 2011 the theme chests were also being used in trainings with preschool teachers at Ute Mountain Ute Tribe in Towaoc, CO by the school readiness coordinator with the local Early Childhood Education Council.

Western Slope Head Start (Rocky Mountain SER) – Grand Junction

1. Sixty-four (64) children were served in the Treasure Chest Program with funding provided by the Scottish Rite Foundation of Colorado.
2. This Treasure Chest Program provides education and training for children and their families in a home-based environment.
3. Program staff coordinate with School District 51 and St. Mary’s Life Center to identify children who need services for speech/language delays.



Two Brothers Supporting Each Other

Exhibit G

Scottish Rite Foundation and RiteCare Partner Addresses and Phone Numbers	
<p>Scottish Rite Foundation of Colorado 1370 Grant Street Denver, CO 80203 303-861-2410 (toll free: 866-289-6797) www.scottishritefoundation.org ritecare@scottishritefoundation.org</p>	<p>Children’s Hospital Colorado Department of Audiology, Speech Pathology, and Learning Services 13123 E. 16th Ave., B-030 Aurora, CO 80045 720-777-6800</p>
<p>Arkansas Valley Regional Medical Center Rehabilitation Services 1100 Carson Avenue La Junta, CO 81050 719-383-6456</p>	<p>Children’s Speech and Reading Center 1330 Oakridge Drive Fort Collins, CO 80525 970-419-0486</p>
<p>Children’s Hospital Colorado Therapy Center – Pueblo 704 Fortino Blvd, Suite A Pueblo, CO 81008 719-595-0829</p>	<p>Memorial Hospital for Children Pediatric Rehabilitation Services 175 S. Union Blvd. Colorado Springs, CO 80910 719-365-5422</p>
<p>Montrose Memorial Hospital Mountain View Therapy 800 South Third Street Montrose, CO 81401 970-240-7369</p>	<p>St. Mary’s Life Center Language Development Clinic 1100 Patterson Road Grand Junction, CO 81506 970-298-6158</p>
<p>Sterling Regional MedCenter Rehabilitation Services 615 Fairhurst Street Sterling, CO 80751 970-526-4818</p>	<p>University of Northern Colorado Audiology and Speech Language Sciences Gunter Hall, Campus Box 140 Greeley, CO 80639 970-351-1587</p>
<p>The Piñon Project 300 N. Elm St. P.O. Box 1510 Cortez, CO 81321 970-564-1195</p>	<p>Western Slope Head Start Rocky Mountain SER 235 North 7th Street, Suite A Grand Junction, CO 81591 970-243-9318</p>
<p>University of Colorado – Boulder Speech, Language and Hearing Sciences 2501 Kittredge Loop Road Campus Box 409 Boulder, CO 80309 303-492-5375</p>	