

# Helping Children Communicate!



## 2012 State of the Foundation Report

Scottish Rite Foundation of Colorado  
a 501(c)(3) public charity  
[www.scottishritefoundation.org](http://www.scottishritefoundation.org)



**Message from the  
Sovereign Grand Inspector General  
in Colorado and President of the  
Scottish Rite Foundation of Colorado**

**The Honorable  
Stephen M. Munsinger, 33<sup>o</sup>**

I am pleased to present the 2012 State of the Foundation Report for the Scottish Rite Foundation of Colorado – commonly referred to as Colorado RiteCare. This report summarizes our work with childhood language disorders giving special focus on the performance of our eleven speech-language partners in Colorado. The Foundation's work is an important way in which Masons help the community through the Masonic teaching of charity.

At the end of 2012 our net assets totaled \$21.7 million. During the year we distributed \$1.0 million in grants to our RiteCare partners – monies which helped make it possible for children to receive speech-language care.

Three significant items regarding our work in 2012 are worthy of special mention.

- ✓ Colorado RiteCare enabled 897 children to receive speech-language services in 20 communities.
- ✓ Colorado RiteCare awarded \$20,000 in scholarships – four \$5,000 scholarships for graduate work in speech-language pathology.
- ✓ Colorado RiteCare administered its statewide program with 5.0 percent overhead over the past three years, 2010-2012.

This report provides information about this remarkable program of service to Colorado families. As you review these pages please keep in mind that about 10 percent of all children are at-risk for some type of speech-language disorder. Whether it be delayed speech development, autism, dyslexia, or many of the other speech-language disorders, Colorado RiteCare remains faithful to its mission and vision of striving to provide every child in Colorado with speech-language disorders the opportunity to receive treatment and care.

On behalf of our Trustees, we are honored to be committed to this work and to be associated with our outstanding partners who deliver the speech-language services. We all thank our many supporters and friends for helping make this work possible – now and in the future.

Sincerely,

*Stephen M. Munsinger*

Stephen M. Munsinger, 33<sup>o</sup>  
Sovereign Grand Inspector General in Colorado



## WHAT WE DID IN 2012

### Scottish Rite Foundation of Colorado

1370 Grant Street

Denver, Colorado 80203-2347

303-861-2410

[www.scottishritefoundation.org](http://www.scottishritefoundation.org)

### RiteCare Service Profile

- ▶ \$33 million spent on speech-language services between 1953 and 2012 - \$1 million in 2012
- ▶ 20 Colorado communities served by 11 RiteCare partners with our financial support
- ▶ 16,866 children served to date
- ▶ 36 graduate scholarships totaling \$180,000 awarded to date - four scholarships awarded in 2012



CHILDREN  
SERVED IN 2012

**897 children**

**Denver and  
North/Northeast  
479 children**

**Colorado Springs and  
South/Southeast  
79 children**

**Grand Junction and  
West/Southwest  
339 children**

### Our Donors Make This Work Possible

- ▶ 2012 donor gifts totaled \$632,000
- ▶ Architects of Care fundraising campaign's goal of \$1 million achieved by December 31, 2012, with campaign gifts totaling \$1,012,188 - helping the Foundation advance speech therapy and related services in Colorado

**The Scottish Rite Foundation of Colorado completed 59 years of service in 2012**

**Overhead Rate of 5.0% for 2010-2012**

The Scottish Rite Foundation of Colorado is a 501(c)(3) public charity, managed by a 7-member Board of Trustees. The Sovereign Grand Inspector General in Colorado - Honorable Stephen M. Munsinger, 33° - serves as its President and Chief Executive Officer.

## Table of Contents

	<u>Page</u>
Introduction	1
Scottish Rite Foundation of Colorado Governance and Management	2
Scottish Rite Foundation of Colorado Mission	3
Scottish Rite Foundation of Colorado Vision	3
Rite Care Partners	4
Clinical Therapy Programs	4
Early Language Development Programs	4
Highlights of the Year 2012	5
Children Served	6
Grants and Expenditures in Support of Colorado RiteCare	6
Financial Trends	7
Net Assets Chart (2000-2012)	8
Grant Distributions as a Percent of Net Assets Chart (2000-2012)	8
Grants Budget Chart (2000-2013)	9
Grant Distributions Chart (2000-2012)	9
Fundraising Accomplishments in 2012	10
Recognition of Special Friends of the Foundation	10
Special Award Recipients	11
Graduate Student Speech-Language Pathology Scholarship Recipients	13
RiteCare Society Members	15
Foundation Fellows	16
Exhibits	17
Exhibit A – Audited Statement of Financial Position	18
Exhibit B – Audited Statement of Activities	19
Exhibit C – Comparison of Recent Three-Year Financial Trends	20
Exhibit D – Recap of RiteCare Children Served in Colorado	21
Exhibit E – Outcomes Evaluation of Children’s Developmental Progress	22
Exhibit F – Selected Highlights from Individual Partner Programs	24
Children’s Hospital Colorado – Aurora	24
Children’s Hospital Colorado Therapy Center – Pueblo	25
St. Mary’s Life Center – Grand Junction	26
Memorial Hospital for Children – Colorado Springs	27
Montrose Memorial Hospital – Montrose	27
University of Northern Colorado – Greeley	28

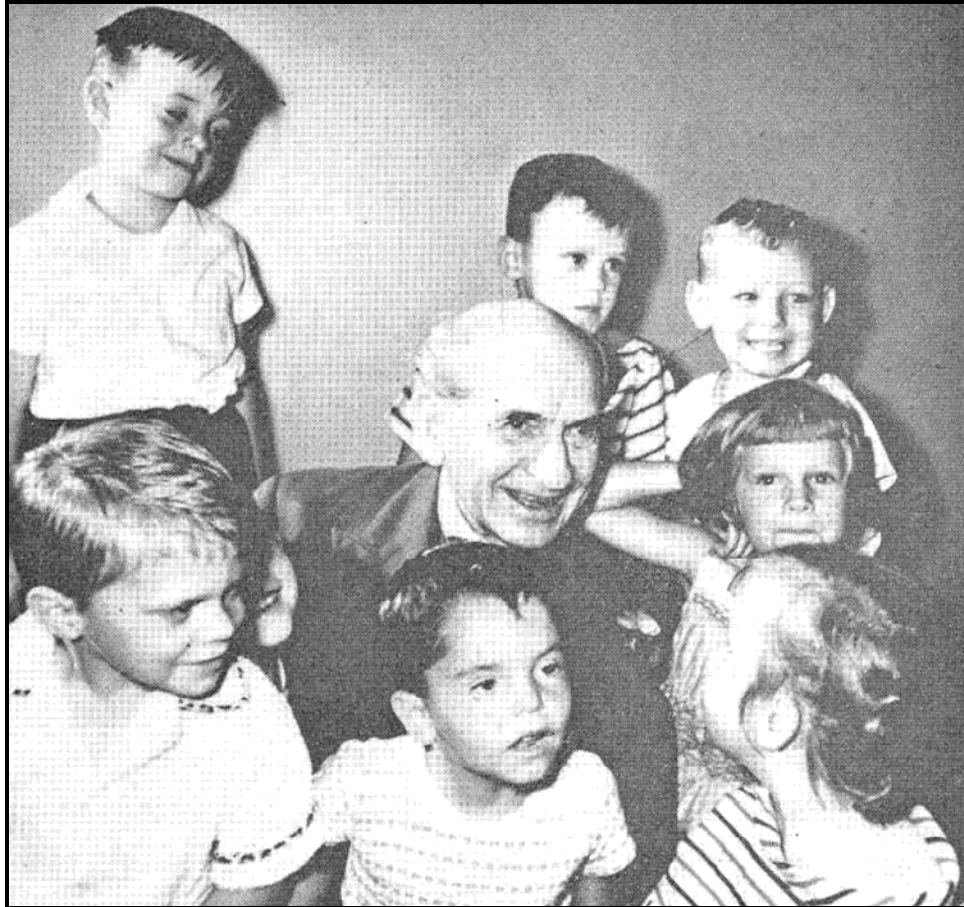
Table of Contents (continued)

	<u>Page</u>
University of Colorado – Boulder	29
Children’s Speech and Reading Center – Fort Collins	30
Sterling Regional MedCenter – Sterling	30
Arkansas Valley Regional Medical Center – La Junta	30
The Piñon Project – Cortez	31
Western Slope Head Start – Grand Junction	31
Exhibit G – Scottish Rite Foundation and RiteCare Partner Contacts	32

**Home and Birthplace  
of the  
Scottish Rite Foundation of Colorado**



**Denver Consistory  
Ancient and Accepted Scottish Rite of Freemasonry  
1370 Grant Street  
Denver, Colorado**



**Judge Haslett P. Burke and RiteCare Children  
ca 1953  
Children's Hospital Colorado**

**Judge Burke was then-Sovereign Grand Inspector General in Colorado and the first president of the Scottish Rite Foundation of Colorado. At the time the Judge served on the Colorado Supreme Court, having been a former Chief Justice on several terms.**

# 2012 State of the Foundation Report

## Introduction

The Scottish Rite Foundation of Colorado (Foundation) was established in 1953 by Scottish Rite Masons in Denver, Colorado as a not-for-profit corporation. The Foundation is approved by the Internal Revenue Service as a IRS Code Section 501(c)(3) public charity. The IRS approval letter, issued in 1954, was reissued in August 2006 by request of the Foundation.

The Foundation was established to provide financial assistance to help families of children with language disorders receive clinical therapy treatment. This is now known nationally and in Colorado as the RiteCare Childhood Language Program. The Colorado RiteCare Program is the first program of its kind in the United States. Since 1953, all States in the Southern Jurisdiction of the Scottish Rite – to which Colorado belongs and which includes 35 States and the District of Columbia – have each organized a RiteCare Childhood Language Program. The Scottish Rite Foundation of Colorado is also a leader in the field by being one of the first organizations in the United States to promote speech and language therapy for preschool-age children.

The Foundation employs no professional caregivers and has no clinical infrastructure. All therapy and related services are provided by professionally qualified and certified speech-language pathologists and learning specialists. The Foundation provides grants to partner organizations to defray the costs that would otherwise be charged to families. The partners are community-based organizations most of which are not-for-profit hospitals.



**Founding Father  
William G. Schweigert, 33°**

Financial assistance applications are made directly to the partner clinic by the applying family and are jointly reviewed by the clinic director and a Foundation committee appointed specifically for this purpose by the President of the Foundation's Board of Trustees. The Foundation's appraisal philosophy affirms the importance of family participation by financially contributing to the care of their child, even though the family's contribution may be minimal. The determination of the amount of the Foundation's financial assistance is based on a graduated scale related to family income and

need. In addition, the assistance is provided after all other sources of financial support are exhausted.

The Foundation's operational characteristics include:

1. Comprehensive speech-language therapy services
2. Community-based partners
3. Statewide coverage
4. Professionally certified speech pathologists employed by partnering organizations
5. Focus on preschool-age children
6. Professionally managed RiteCare clinics, centers, and Foundation operations
7. Overhead cost efficiency

Speech therapy and related services are delivered by nationally certified speech-language pathologists, learning specialists, and related professionals. Certification requires a graduate college degree in the specialty field. More than 200 speech pathologists, audiologists, and learning specialists are employed by the Foundation's partners in Colorado. Each partnering organization has established credentialing requirements for its professional staff of caregivers.

Service is typically provided to children with disabilities – without regard to race, color, religion, gender, or national origin. Disabilities may include language delay, hearing loss, cleft lip and palate, autism spectrum disorder, Down syndrome, brain injury, dyslexia, voice disorders, fluency dysfunction and other disorders of speech and language development.

### **Scottish Rite Foundation of Colorado Governance and Management**



**L to R: Vern Ingraham, Lee Schlessman, Steve Munsinger, Karl Hinkle, Rick Frohlick, Deborah Hayes, Gerry Ford, John Groves, Tom Magnuson**

The Foundation is governed by a seven-member Board of Trustees which establishes policy and overall guidance for Foundation operations. The Board receives no compensation for time spent and services provided. At December 31, 2012, the Board consisted of the following individuals.

Stephen M. Munsinger, President (Denver)  
John W. Groves, Vice President (Grand Junction)  
Lee E. Schlessman, Treasurer (Denver)  
Gerald A. Ford (Arvada)  
Richard G. Frohlick (Denver)  
Thomas R. Magnuson (Kansas, Colorado member)  
Karl J. Hinkle (Colorado Springs)

The day-to-day operations of the Foundation are the responsibility of the Executive Secretary, Vernon B. Ingraham (Denver).



The Foundation's flagship partner is Children's Hospital Colorado (Children's Colorado). Since 1953 grants to Children's Colorado totaled \$24.8 million (75 percent of all grants awarded by the Foundation totaling \$33 million). Deborah Hayes, Ph.D., chairs the Department of Audiology, Speech Pathology, and Learning Services at Children's Colorado. Since 1983 she has occupied this position and, as such, serves as an ex officio member of the Foundation's Board of Trustees. In 2003 the Foundation completed a \$2 million fundraising campaign to establish the *Kelley Family/Schlessman Family Scottish Rite Masons Chair in Childhood Lanaguage Disorders* at Children's Hospital Colorado. Dr. Hayes occupies this distinguished chair and as such has responsibility for coordinating all Foundation-supported RiteCare operations in Colorado.



**RiteCare Child  
CHC Therapy Care Center,  
Pueblo**

In addition, the Board has two standing committees to provide support for Foundation operations. These are the Finance Committee and the Long Range Planning Committee. The Finance Committee, comprised of three Trustees and one adhoc member (Executive Secretary), meets quarterly with the Foundation's investment portfolio managers. The Long Range Planning Committee, consisting of three Trustees and two adhoc members (Dr. Hayes and the Executive Secretary), meets at least annually to review and recommend strategic planning initiatives for the Board of Trustees' consideration. In 2012 the Foundation's administrative overhead rate was 7.4 percent. Administration expenses of \$81,660 in comparison to total expenses of \$1,106,513 reflect well on the Board of Trustees in their management of the Foundation.

### **Scottish Rite Foundation of Colorado Mission**

The mission of the Scottish Rite Foundation of Colorado, as officially endorsed by the Board of Trustees, is to "enhance the quality of life for Colorado's children and their families by supporting high quality, collaborative programs for the prevention and treatment of childhood language disorders." The Foundation accomplishes this by:

1. Providing sustaining support to children, families, and communities for the prevention and treatment of childhood language disorders.
2. Helping partner-programs provide speech, language, and learning therapy for children; parent education; and family and community language enrichment programs.
3. Supporting student and professional education and training.

### **Scottish Rite Foundation of Colorado Vision**

The vision of the Scottish Rite Foundation of Colorado, as officially endorsed by the Board of Trustees, is to "ensure that all Colorado children with language disorders have the opportunity to receive treatment and care."





**RiteCare Children and Therapist  
University of Colorado - Boulder**



**RiteCare Child and Therapist  
Children's Speech & Reading Center,  
Fort Collins**

The 2012 clinical therapy programs were offered at partnership locations including satellite clinics of certain partners – totaling 16 communities: Aurora, Boulder, Colorado Springs, Delta, Fort Collins, Grand Junction, Greeley, La Junta, Littleton, Loveland, Montrose, Parker, Pueblo, Ridgway, Sterling, and Westminster.

The 2012 early (preschool-age) language development programs were offered at partnership locations including associated preschool programs in outlying locations – totaling five communities: Cortez, Dolores, Dove Creek, Grand Junction, and Mancos.

### **Highlights of the Year 2012**

The year 2012 was highly successful with regard to the work of the Scottish Rite Foundation of Colorado and its RiteCare Childhood Language Program. See Exhibit F for a summary of partner annual report highlights. Foundation highlights for the year include:

1. Providing services to 897 children with financial support from the Scottish Rite Foundation of Colorado including speech therapy and/or related services for 683 children and early language and literacy services (Treasure Chest Program) for 214 children.
2. Awarding four scholarships of \$5,000 each to second-year graduate students at the University of Colorado – Boulder and the University of Northern Colorado. Scholarships are awarded in the name of Dwight A. Hamilton, former Sovereign Grand Inspector General in Colorado and former President of the Foundation (1994-2005)
3. Conducting outreach programs in partnership with the following RiteCare clinics: Children's Hospital Colorado in Aurora, St. Mary's Life Center in Grand Junction, UNC in Greeley, and CU in Boulder. This included discussions with speech-language pathology graduate students at both universities as well as presentations to Scottish Rite Reunion Classes in Denver, Colorado Springs, and Grand Junction.

4. Participating in special fundraisers for the Foundation such as the Pints Pub Scotch Tasting fundraiser – the sixth year this fundraiser has been generously hosted by Pints Pub in Denver.

### **Children Served**

Since the Foundation's beginning in 1953, 16,866 children have been served through its RiteCare partners. For the 12 months ended December 31, 2012, the Foundation served 897 children in Colorado. See Exhibit D for more details.

	<u>2012</u>	<u>2003 - 2012</u>	<u>1953 - 2012</u>
Denver and North/Northeast Colorado	479	3,911	11,876
Grand Junction and West/Southwest Colorado	339	2,759	3,626
Colorado Springs and South/Southeast Colorado	<u>79</u>	<u>769</u>	<u>1,364</u>
Total Children Served	<u>897</u>	<u>7,438</u>	<u>16,866</u>

The RiteCare program directors evaluate children's progress throughout Colorado by means of the Child Development Inventory. Based on an inventory of progress of 1,072 RiteCare children since the evaluation's inception in 2002, the most robust developmental gains are noted in the area of social-communicative behaviors. See Exhibit E for details.

### **Grants and Expenditures in Support of Colorado RiteCare**

In 2012 grants to the RiteCare clinics/centers totaled \$997,898 and \$20,000 for graduate student scholarships representing 3.1 percent of total grants since 1953 and 4.7 percent of net assets and 45.8% of fiscal year revenues as of December 31, 2012 (see Exhibit B).

	<u>2012</u>	<u>Inception - 2012</u>
Children's Hospital Colorado – Aurora	\$ 471,745	\$ 23,547,694
Children's Hospital Colorado Therapy Center – Pueblo	59,402	1,290,494
Parkview Hospital – Pueblo	-0-	905,817
St. Mary's Life Center – Grand Junction	113,916	2,692,727
Memorial Hospital for Children – Colorado Springs	49,579	1,520,738
Montrose Memorial Hospital – Montrose	61,132	1,120,821
Sterling Regional MedCenter – Sterling	3,013	16,289
Arkansas Valley Regional Medical Center – La Junta	3,974	33,970
University of Northern Colorado – Greeley	6,558	304,870
University of Colorado – Boulder	29,000	148,141
Children's Speech & Reading Center – Fort Collins	114,059	1,338,658
The Piñon Project – Cortez	53,520	462,940
Western Slope Head Start – Grand Junction	32,000	219,000
Let's Talk! Speech Therapy – Canon City	-0-	588
Graduate Scholarships	<u>20,000</u>	<u>200,000</u>
Total Program Support	<u>\$1,017,898</u>	<u>\$ 33,044,565</u>

In 2012 the statewide average annual cost-per-child for therapy-related services was \$1,665 – a strong investment with substantial returns in language and communication development. Through our investment in their future, many children with disabilities such as language delay,

hearing loss, cleft lip and palate, autism spectrum disorder, Down syndrome, brain injury, dyslexia, voice disorders, fluency dysfunction, and other disorders of speech and language development received help that might not otherwise have been available.

## **Financial Trends**

Total program expenditures in support of the Colorado RiteCare Childhood Language Program include, in addition to speech therapy and related services, the following: (1) Endowed Chair at Children’s Hospital Colorado, (2) Capital Improvements such as the Early Language Intervention Room at the University of Northern Colorado and the Speech Therapy Group Room at Children’s Hospital Colorado, (3) Equipment purchases for various clinics, and (4) the Graduate Scholarship awards. These expenditures are summarized as follows.

	<u>2012</u>	<u>2003 - 2012</u>	<u>Inception - 2012</u>
Speech Therapy and Related Services	\$ 997,898	\$ 14,282,957	\$ 29,918,450
Kelley Family/Schlessman Family Scottish Rite Masons Chair in Childhood Language Disorders	-	2,000,000	2,000,000
Group Therapy Room Special Projects		255,948	255,948
Equipment for Clinic Therapy Programs	-	100,000	670,167
Graduate Scholarships in Speech Pathology	<u>20,000</u>	<u>180,000</u>	<u>200,000</u>
Total Program Expenditures	<u>\$1,017,898</u>	<u>\$ 16,818,905</u>	<u>\$ 33,044,565</u>

The Program Grants expenditures in the audited financial statements total \$1,017,898. Included in this category are expenditures for selected clinics in sponsoring holiday receptions for clinicians, RiteCare children, and parents including the gift of age-appropriate books to the children. Total support for this function in 2012 was \$375.

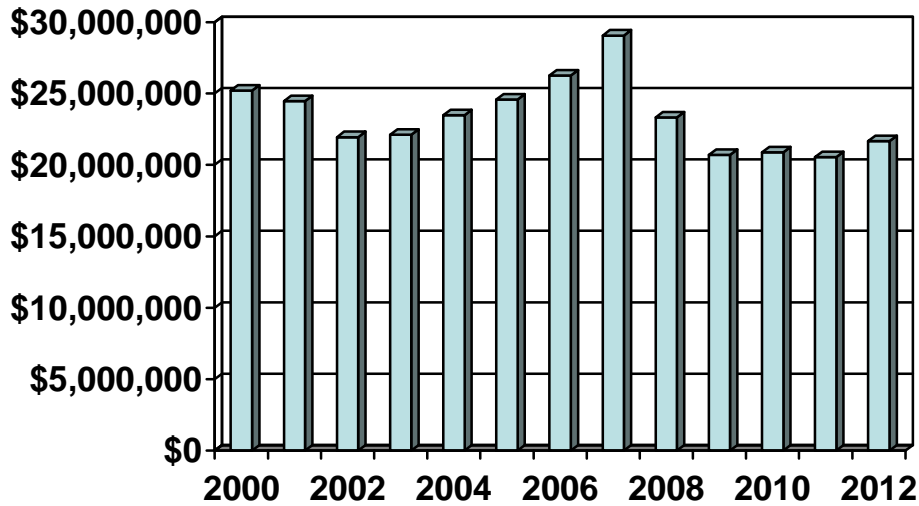
During 2003-2012, the Foundation’s net assets ranged from a low of \$20.5 million at the end of 2011 to a record high of \$29.1 million at the end of 2007. See Exhibits A and B for the 2012 audited financial statements. Net Assets as of 12/31/2012 total \$21,661,990.



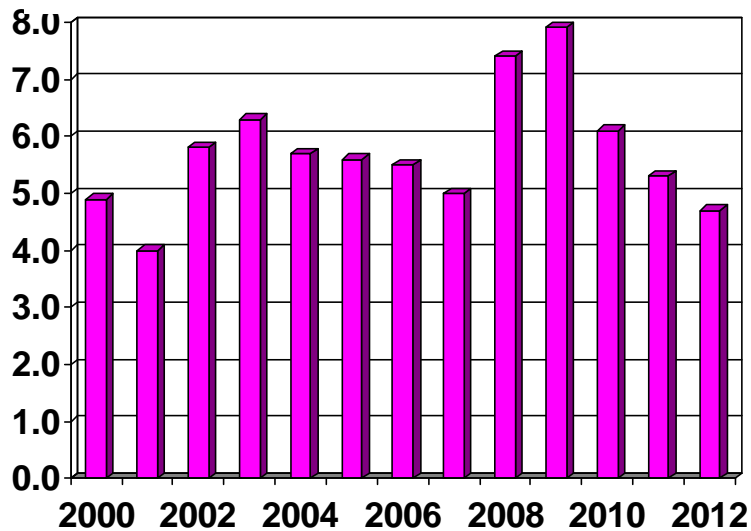
**RiteCare Families at Pueblo Clinic Annual Picnic at the Zoo  
Sponsored by Southern Colorado Scottish Rite Masons**

The following charts present trends since 2000 for grant budgets, grant distributions, and the end-of-year net asset base. They illustrate the Board of Trustees' dedication to sustaining support for Colorado RiteCare.

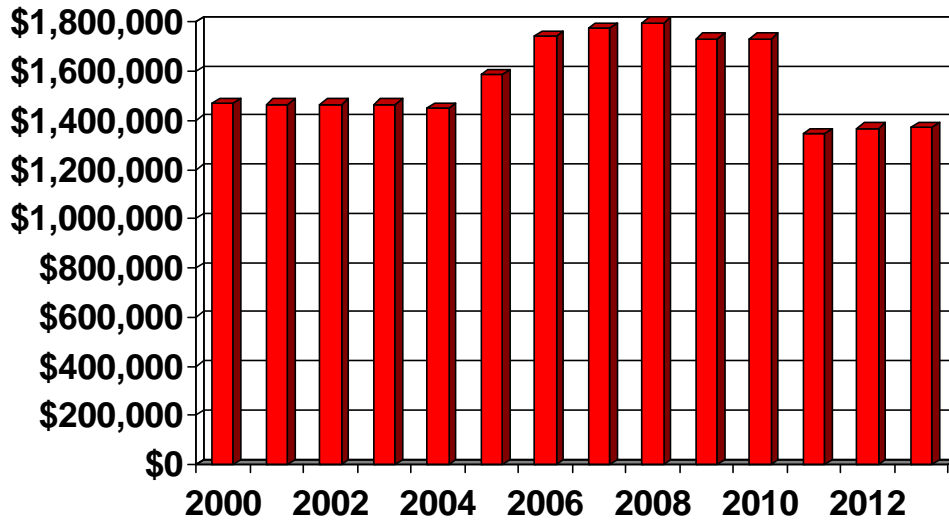
### Net Assets 2000-2012



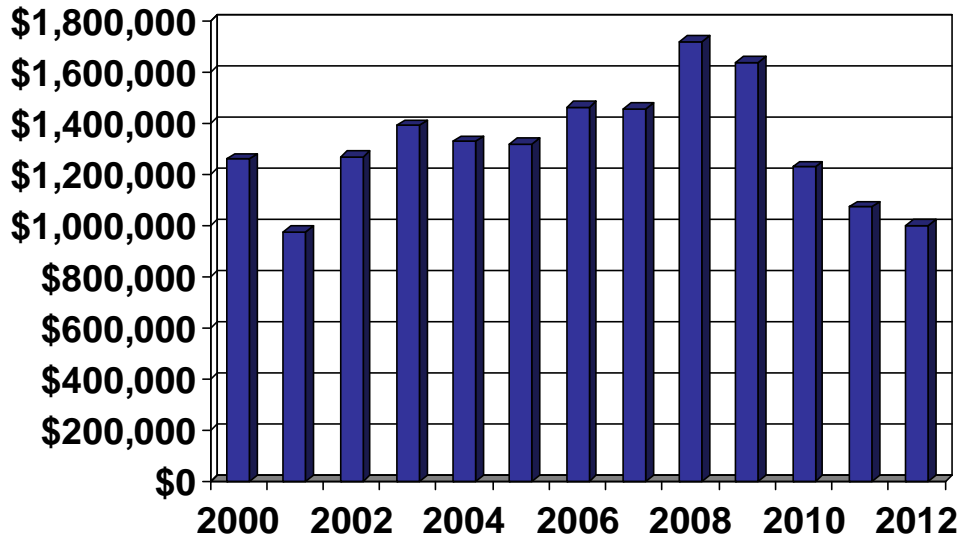
### Grant Distributions as a Percent of Net Assets 2000-2012



## Grants Budget 2000-2013



## Grant Distributions (based on actual billings) 2000-2012



## **Fundraising Accomplishments in 2012**

In 2012 the Foundation received cash gifts and donations totaling \$631,886 detailed as follows.

	<u>Total Gifts</u>	<u>Restricted Gifts</u>	<u>Unrestricted Gifts</u>
Estates and Trusts	\$ 508,496	\$ 404,287	\$ 104,209
Individual Donations	69,790	11,271	58,519
Masonic Organizations	5,000		5,000
Non-Masonic Organizations	<u>48,600</u>	<u>31,000</u>	<u>17,600</u>
	<u>\$ 631,886</u>	<u>\$ 446,558</u>	<u>\$ 185,328</u>

Temporary restrictions typically pertain to several purposes including certain gifts designated for the Architects of Care fundraising campaign; gifts designated for the Talking with Technology Camp and the First Steps Camp; and gifts for the Early Language Intervention Program (Treasure Chest Program). In 2012 a permanently restricted bequest was received totaling \$404,287. The historical dollar value of the gift principal cannot be expended and must be maintained with earnings and value appreciation being available for program support.

The 2012 annual appeal drive generated \$65,000 in donations. In addition, at the end of 2012 the Architects of Campaign fundraising campaign had generated \$1,012,188 in gifts since the campaign began in the summer of 2008 just before the market crash. Shortly thereafter the campaign was suspended and not reactivated until early 2011. The campaign goal of \$1.0 million was achieved one year ahead of schedule.

## **Recognition of Special Friends of the Foundation**

The Scottish Rite Foundation of Colorado is deeply grateful to its many friends for their support in helping children with language disorders. Between January 2000 and December 2012 more than 4,250 financial gifts were made to the Foundation. Hundreds of donors are annually helping to make the Foundation's mission and vision become a reality for thousands of children in the future.

Several categories of the Foundation's friends are worthy of special mention. These individuals include:

- Honors of the Foundation Award Recipients
- Distinguished Service Award Recipients
- Graduate Student Speech-Language Pathology Scholarship Recipients
- RiteCare Society Members
- Foundation Fellows



## **Special Award Recipients**

The Scottish Rite Foundation of Colorado presents two major awards in recognition of individuals and/or organizations that have helped to make a difference.

The highest award is the “Honors of the Foundation.” Its purpose is to recognize individuals whose contributions have significantly enhanced the work of the Foundation. The award is presented to either Masons or non-Masons whose personal philanthropy, dedicated leadership, and/or sustaining support have enabled the Foundation to achieve its mission and vision. A suitable trophy is presented to the recipient.

The second highest award is the “Distinguished Service Award.” Its purpose is to recognize individuals or groups who contribute time or talents to improving services in RiteCare programs. The award is presented to either Masons or non-Masons whose contributions in time and/or talents have significantly improved the operations of the Foundation or care of children in the RiteCare programs.

## **Honors of the Foundation**

2004	<b>John I. Ladd, 33°</b>
2005	<b>Dwight A. Hamilton, 33°</b>
2006	<b>William D. Hewit, 33°</b>
2007	<b>Bruce A. Kelley</b> The Rollie R. Kelley Family Foundation <b>Kathryn Kelley Huwaldt</b> The Rollie R. Kelley Family Foundation <b>Barbara J. Kelley</b> The Rollie R. Kelley Family Foundation
2008	<b>George, 32° KCCH, &amp; Neva Frohlick</b> <b>Deborah Hayes, Ph.D.</b> Kelley Family/Schlessman Family Scottish Rite Masons Chair in Childhood Language Disorders, Children’s Hospital Colorado
2009	<b>Ben M. Crossno, 33°</b>
2010	<b>Lee E. Schlessman, 33°, Grand Cross</b>

## **Distinguished Service Award**

2004	<b>Denver Consistory Ladies</b>
2005	<b>John S. Russell, 33°</b>
2006	<b>Ashley S. Buss, 32° KCCH</b>
2007	<b>Sandra D. Morrison</b> Vice President, Children's Hospital Colorado Foundation
	<b>Valerie Hernandez</b> Special Assistant to Deborah Hayes, Ph.D. Children's Hospital Colorado
2008	<b>Norman L., 33°, &amp; Juanita Hoff</b> <b>James L. Nunn, 33°</b>
2009	<b>Virginia Howey</b> Director, The Piñon Project  <b>Otsie Stowell, 32° KCCH</b>
2010	<b>James L. Martin III, Ph.D.</b> Foundation Webmaster
2011	<b>Kathleen Fahey, Ph.D.</b> UNC RiteCare Director
	<b>Southern Colorado Scottish Rite Masons</b>

## **Graduate Student Speech-Language Pathology Scholarship Recipients**

The graduate scholarship program assists second-year graduate students in speech-language pathology complete their education. It also encourages (but cannot require) them to seek employment in Colorado. Through 2012, 36 scholarships totaling \$180,000 have been awarded.

In 2003 the Colorado Masons' Benevolent Fund Association, in collaboration with the Foundation, initiated a graduate scholarship in speech-language pathology. The Association is the main charitable arm for the Most Worshipful Grand Lodge of AF and AM of Colorado. Between 2003 and 2012 the Association awarded 20 scholarships totaling \$100,000.

In 2005 the Scottish Rite Foundation of Colorado initiated a graduate scholarship in speech-language pathology. This scholarship is named in honor of former Sovereign Grand Inspector General and President of the Foundation, Dwight A. Hamilton. Between 2005 and 2012 the Foundation awarded 16 scholarships totaling \$80,000.

In addition, a national scholarship in speech-language pathology has been awarded to five Colorado graduate students by the *Supreme Council* of the Ancient and Accepted Scottish Rite of Freemasonry for the Southern Jurisdiction. This scholarship is known as the Sam and Millie Hilburn Scholarship in the field of Childhood Language Disorders. A total of \$30,000 has been awarded.

### **Sam and Millie Hilburn Scholarship (Supreme Council) in the field of Childhood Language Disorders**

2001	Vindi Wells	University of Northern Colorado
2005	Marybeth Ames	Ph.D. Candidate & Speech Pathologist at Children's Speech & Reading Center in Fort Collins
2010	Rebecca L. McNeil	University of Colorado
2010	Christina D. Wilkins	University of Colorado
2012	Melissa K. Klaer	University of Colorado

### **Dwight A. Hamilton Scottish Rite Foundation Graduate Scholarship in Speech-Language Pathology**

2005	Joni M. Oldroyd	University of Colorado
2005	Rachael E. Glustrom	University of Colorado
2006	Amy M. Mulligan	University of Colorado
2006	Laura M. Wilson	University of Colorado
2007	Danielle K. Cavallaro	University of Colorado
2007	Amanda Vargo	University of Colorado
2008	Laura K. Jordan	University of Northern Colorado
2008	Jennifer M. Leggette	University of Colorado
2009	Kimberly A. Turner	University of Colorado
2009	Meghan K. Fitzgerald	University of Colorado
2010	Rebecca L. McNeil	University of Colorado
2010	Hannah L. Shippey	University of Colorado
2011	Jocelyn R. Essler	University of Colorado
2011	Loriann Schwartz	University of Colorado
2012	Madison L. Atkins	University of Colorado
2012	Sheryl L. Schaller	University of Colorado

**Colorado Masons' Benevolent Fund Association  
Graduate Scholarship in Speech-Language Pathology**

2003	Kyle R. Weber	University of Northern Colorado
2003	Mandy J. Hansen	University of Northern Colorado
2004	Brianne Lay	University of Northern Colorado
2004	Marie R. Pechous	University of Northern Colorado
2005	Jill Emeson	University of Northern Colorado
2005	Sara E. Rode	University of Northern Colorado
2006	Kristine D. Leedy	University of Northern Colorado
2006	Rachel K. Moore	University of Northern Colorado
2007	Lindsey Greer	University of Northern Colorado
2007	Adrianna Ackerman	University of Northern Colorado
2008	Jennifer Wiedmeier	University of Northern Colorado
2008	Sara N. Robinson	University of Northern Colorado
2009	Kristin M. Michie	University of Northern Colorado
2009	Alyssa J. Winbourne	University of Northern Colorado
2010	Natasha Maria	University of Northern Colorado
2010	Elisabeth A. Robertson	University of Northern Colorado
2011	Catherine C. Finkenstaedt	University of Northern Colorado
2011	Adriane N. Zachary	University of Northern Colorado
2012	Bethany K. Levin	University of Northern Colorado
2012	Carrie M. Arensmeyer	University of Northern Colorado



**Audiology, Speech Pathology and Learning Service Management Team  
at Children's Hospital Colorado**

## **RiteCare Society Members**

The RiteCare Society was established by the Scottish Rite Foundation of Colorado in 2007 as an association of former and current volunteers who support the work of the Foundation. Society membership is earned by volunteering the equivalent of 30 hours in service to the Foundation. Current Society members are listed below according to Scottish Rite's organizational structure in Colorado.

## **RiteCare Society Members**

### **Valley of Denver**

Fran Adams  
Kay Applegate  
Robert W. Applegate, 33°  
Virginia Arner  
Wayne G. Arner, 33°  
Esther M. Bartholic  
Robert L. Bartholic, 33°  
Carol Bowser  
Rosie Anderson Brandel  
Milton Brandwein, 33°  
Ashley S. Buss, 32° KCCH  
Phyllis Campbell  
Marie Cox  
G. Robert Dinkel, 32° KCCH  
Lula Ellsworth  
Donald L. Emarine, 33°  
Glenita Emarine  
Gerald A. Ford, 33°  
Richard G. Frohlick, 33°  
Donna Glasscock  
James W. Glasscock, 33°  
Robert W. Gregory, 33°  
Tiz Hamilton  
Ruth Harlan  
Deborah Hayes, Ph.D.  
Judi Hessel  
Michael E. Hessel, 33°  
Valerie Hernandez  
Juanita Hoff  
Norman L. Hoff, 33°  
Vernon B. Ingraham, 33°, Grand Cross  
Charles G. Johnson, 33°  
Judi Lehman  
Thomas R. Magnuson, 33°  
June McMullen  
Stephen M. Munsinger, 33°, SGIG  
Eileen Naiman  
Alice Norris

Robert F. "Trey" Perrin, 32° KCCH  
Claudene Preston  
John S. Russell, 33°  
Lee E. Schlessman, 33°, Grand Cross  
Richard W. Schmidt, 33°  
Donald F. Schultz, 33°  
Jack M. Shepard, 32° KCCH  
David D. Swift, 33°  
JoAnn VanTrump

### **Valley of Colorado Springs/Pueblo**

David K. Ashley, 32°  
Robert M. Burr, 33°  
William W. Chinn, 33°  
David L. Coberly, 33°  
Gordon R. Cooper, 33°  
Ben M. Crossno, 33°  
Kennard D. Henry, 33°  
Kate Leyda  
J. R. "Jack" McConnell, 33°  
Michael L. McMillan, 33°  
Donald A. Noffsinger, 32°  
James L. Nunn, 33°  
Donald C. Phillips, 33°  
James A. Stivers, 33°  
Gerome Walton, 32°  
Elizabeth Woodman  
Jack A. Woodman, 33°

### **Valley of Grand Junction**

Richard S. Carnett, 32° KCCH  
Thomas J. Cox, 33°  
John W. Groves, 33°  
Donald A. Hobbs, 33°  
Rodney W. Johnson, 33°  
James L. Smith, 33°  
Rex Swanson, 32°

## **Foundation Fellows**

A Foundation Fellow is a distinguished designation for an individual who makes a monetary contribution to the Scottish Rite Foundation of Colorado of \$10,000 or more. It is open to all donors regardless of Masonic membership or affiliation.

### **Foundation Fellows**

Robert L. Bartholic, 33°  
Esther M. Bartholic  
Richard S. Carnett, 32° KCCH  
James E. Duncan, 33°  
Susan M. Duncan  
George A. Frohlick, 32° KCCH  
Neva C. Frohlick  
Robert W. Gregory, 33°  
Deborah Hayes, Ph.D.  
James L. Martin, III, Ph.D.  
John R. Hendrickson, 33°  
William D. Hewit, 33°  
Betty Ruth Hewit  
Vernon B. Ingraham, 33°, Grand Cross  
Bruce A. Kelley  
Barbara J. Kelley  
Kathryn Kelley Huwaldt  
Thomas L. Redditt, Sr., 33°  
Elinor P. Redditt  
Leon C. Rittenhouse, 32°  
Lee E. Schlessman, 33°, Grand Cross  
Dolores J. Schlessman  
Irving O. Shuel, 32° KCCH  
Betty L. Shuel  
Roger A. Wainwright, 32°  
Ernest O. West, 32°



**Dolores and Lee Schlessman with Deborah Hayes (center)**

## **Exhibits**

The following Exhibits provide additional information on Foundation activities in 2012.

**Exhibit A** – Audited Statement of Financial Position

**Exhibit B** – Audited Statement of Activities

**Exhibit C** – Comparison of Recent Three-Year Financial Trends

**Exhibit D** – Recap of RiteCare Children Served in Colorado

**Exhibit E** – Outcomes Evaluation of Children’s Developmental Progress during Therapy

**Exhibit F** – Selected Highlights from Individual Partner Programs 2012 Annual Reports

**Exhibit G** – Scottish Rite Foundation and RiteCare Partner Addresses & Phone Numbers

## EXHIBIT A

### Audited Consolidated Statement of Financial Position

Scottish Rite Foundation of Colorado  
December 31, 2012

#### Assets

Cash and cash equivalents:		
Unrestricted	\$ 1,079,589	
Temporarily restricted	<u>30,680</u>	\$ 1,110,269
Prepaid Expenses		480
Interest receivable		67,102
Investments		19,406,888
Fixed assets, net		5,579
Land held for investment		410,036
Beneficial interest in split-interest agreements		<u>855,870</u>
 Total Assets		 <u>\$ 21,856,225</u>

#### Liabilities and Net Assets

Accounts payable and accrued liabilities	\$ 3,093	
Grants payable	<u>191,142</u>	
 Total liabilities		\$ 194,235
 Net assets:		
Unrestricted	\$ 19,807,731	
Temporarily restricted	1,449,972	
Permanently restricted	<u>404,287</u>	
 Total net assets		 <u>21,661,990</u>
 Total liabilities and net assets		 <u>\$ 21,856,225</u>

Note a: The Scottish Rite Foundation of Colorado requires its annual financial statements to be audited by an independent certified public accountant. An annual IRS form 990 is also prepared. The auditing firm in 2012 was Marrs, Sevier & Company, LLC. The auditors expressed a clean opinion on the 2012 financial statements in their letter to the Board of Trustees dated May 15, 2013. The auditors' report including the audited financial statements and the IRS form 990 are permanently on file in the Foundation office. These documents are available for public review upon request.

Note b: The consolidated financial statements include the financial statements of the Foundation and its wholly owned subsidiary RiteCare LLC, a sole member limited liability company, which holds the Foundation's land held for investment. All transactions and balances between the entities have been eliminated in consolidation. During 2012 the final steps were completed in receiving a parcel of land bequeathed to the Foundation. The land, consisting of 1,569 acres of dry agricultural land located in Cheyenne County, Colorado, is subject to a life estate lease which will remain in effect until the death of the current tenant.



## EXHIBIT B

### Audited Consolidated Statement of Activities

Scottish Rite Foundation of Colorado  
Year ended December 31, 2012

	<u>Unrestricted</u>	<u>Temporarily Restricted</u>	<u>Permanently Restricted</u>	<u>Total</u>
Support and revenue:				
Investment income:				
Interest and dividends	\$ 497,498			\$ 497,498
Other investment income	13,728			13,728
Realized gains	14,871			14,871
Unrealized gains	1,067,925			1,067,925
Donations and memberships	147,430	\$ 80,169	\$ 404,287	631,886
Change in split interest agreements		(2,326)		(2,326)
Donations released from restrictions	<u>35,572</u>	<u>(35,572)</u>		
Total support and revenue	1,777,024	42,271	404,287	2,223,582
Expenses:				
Program grants - Annual	1,017,898			1,010,898
Management and general	81,660			81,660
Fundraising	<u>6,955</u>			<u>6,955</u>
Total expenses	1,106,513	-	-	1,106,513
Change in net assets	670,512	42,271	404,287	1,117,070
Net assets at beginning of year	<u>19,137,219</u>	<u>1,407,701</u>	<u>-</u>	<u>20,544,920</u>
Net assets at end of year	<u>\$ 19,807,731</u>	<u>\$ 1,449,972</u>	<u>\$ 404,287</u>	<u>\$ 21,661,990</u>

Note a: See Note a in Exhibit A.

Note b: See Note b in Exhibit A.

## EXHIBIT C

### Comparison of Recent Three-Year Financial Trends

The administrative overhead rate for the three-year period 2010-2012 was 5.0%. The 2012 administrative overhead rate was 7.4%. The overhead rate is calculated by dividing the total general and administrative (G&A) overhead expense by the total expense which includes grants and fundraising costs. G&A expense for 2012 represents 3.7% of total donations for the year.

**Scottish Rite Foundation Financial Recap  
(based on audited financial statements)  
2012**

Grants to Partners	\$1.0 million
Donations Received	\$0.6 million
Children Served	897
Overhead Rate	7.4%

**Scottish Rite Foundation Financial Recap  
(based on audited financial statements)  
2010-2012**

Grants to Partners	\$3.4 million
Donations Received	\$2.0 million
Children Served	2,859
Overhead Rate	5.0%



RiteCare Children – Montrose Memorial Hospital

## EXHIBIT D

<b>Recap of RiteCare Children Served in Colorado</b>				
<b>Partner</b>	<b>Geographic Area of Colorado</b>	<b>First Year of Active Partnership</b>	<b>Children Served Since Partnership Inception</b>	<b>Children Served in 2012</b>
<b>Clinic Programs – Service Area: Denver Metro, North, and Northeast Colorado</b>				
Children’s Hospital Colorado – Aurora	Denver Metro Area	1953	10,569	274
Children’s Speech & Reading Center – Fort Collins	North	1998	916	164
University of Northern Colorado – Greeley	North	2001	127	6
Sterling Regional MedCenter – Sterling	Northeast	2006	20	2
University of Colorado – Boulder	North	2007	244	33
<b>Total Children Served in Service Area</b>			<b>11,876</b>	<b>479</b>
<b>Clinic Programs – Service Area: South and Southeast Colorado</b>				
Children’s Hospital Colorado Therapy Center – Pueblo (clinic operation assumed by Children’s Hospital Colorado in 2001)	South	1987	851	41
Memorial Hospital – Colorado Springs	South	1997	491	36
Arkansas Valley Regional Medical Center – La Junta	Southeast	2006	21	2
Let’s Talk! Speech Therapy – Cañon City	South	2006 (discontinued in 2007)	1	0
<b>Total Children Served in Service Area</b>			<b>1,364</b>	<b>79</b>
<b>Clinic Programs – Service Area: West and Southwest Colorado</b>				
St. Mary’s Life Center – Grand Junction	West	1986	1,275	84
Montrose Memorial Hospital	West	1998	430	41
<b>Total Children Served in Service Area</b>			<b>1,705</b>	<b>125</b>
<b>TOTAL CLINIC PROGRAM CHILDREN SERVED</b>			<b>14,945</b>	<b>683</b>
<b>Early Language Development Programs – Service Area: West and Southwest Colorado</b>				
The Piñon Project – Cortez	Southwest	2000	1,473	157
Western Slope Head Start – Grand Junction	West	2005	448	57
<b>Total Early Language Development Program Served</b>			<b>1,921</b>	<b>214</b>
<b>TOTAL RITECARE CHILDREN SERVED</b>			<b>16,866</b>	<b>897</b>

## EXHIBIT E

### Outcomes Evaluation of Children's Developmental Progress during Therapy

The Outcomes Evaluation was implemented statewide in 2002 to measure a RiteCare child's development in a variety of areas including social skills, expressive language and language comprehension. It was initiated by Dr. Deborah Hayes and Martha Drake, Manager, Children's Hospital Colorado Therapy Center – Pueblo, a satellite clinic of Children's Hospital Colorado. As of December 31, 2012, the inventory database includes 1,247 children.

The evaluation is based on parental assessment of a child's development by standardized questionnaire, *Child Development Inventory*. Parents know their child best. A parent's perspective and priorities are invaluable to planning therapy. Thus, this input is critical to assessing a child's progress during therapy.

Measures include comparing children's developmental age in each domain (e.g., expressive language, language comprehension, social skills, etc.) with their chronological age. If the child's developmental age is equivalent to his/her chronological age, his/her developmental quotient is 100. Typically developing children have developmental quotients in all domains ranging from 85 to 115.

On the average, children enrolled in the Foundation's clinical program show developmental delay, most pronounced in the language domains of expressive language, language comprehension, and social skills. The most robust developmental gains for children enrolled in therapy are in the area of social skills. Most social skills items in the inventory relate to social-communicative behaviors (e.g., "asks for help" . . . "understands 'wait a minute'" . . . "talks about how to do" . . . "makes excuses" . . .).

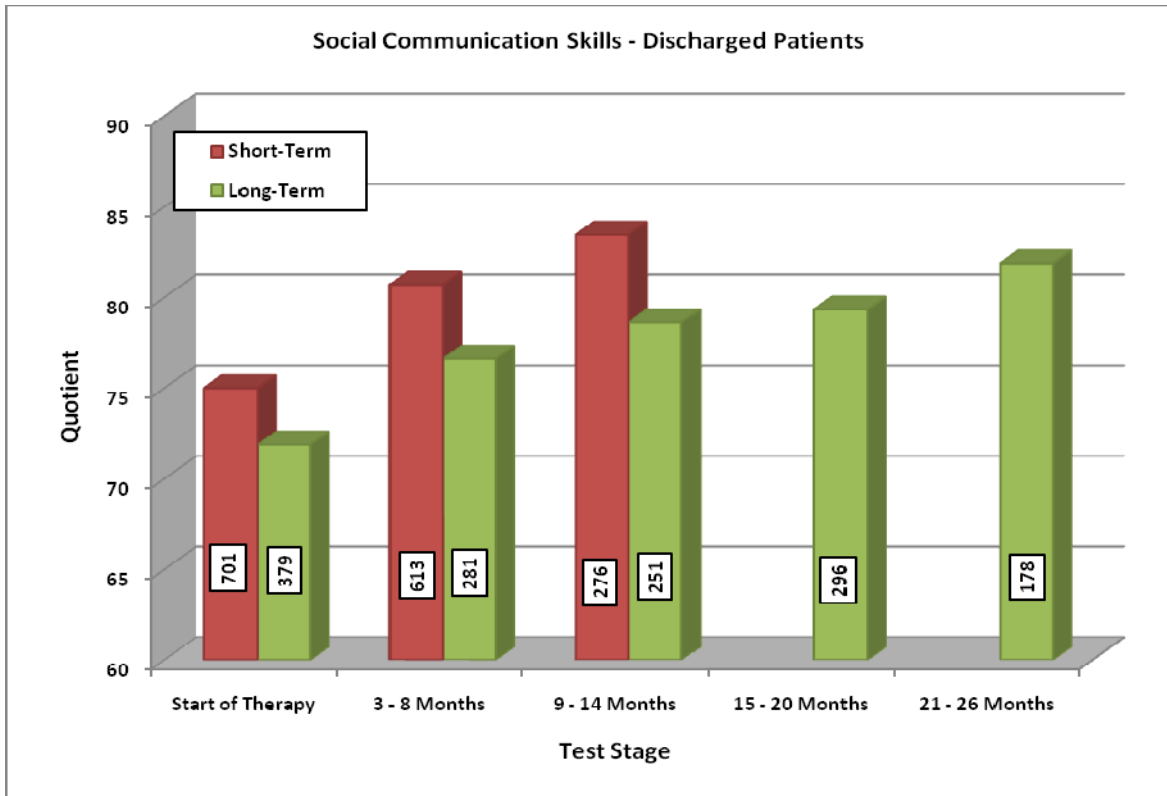
Children who enter Foundation clinical programs with less significant delays in the language domains show progress within six to 12 months of therapy. These youngsters are typically discharged from therapy when they approach the normal range of developmental quotients.

Children who enter Foundation clinical programs with the more significant delays in the language domains make slow, steady progress and may remain in therapy for up to two years.

The following chart summarizes outcome results for social skills development for the children who have been discharged from therapy divided into "short term" versus "long term" patients. Short term patients typically need 12 months or less of therapy to make significant gains. Long term patients typically require up to two years of treatment to "catch up" to their typically developing peers. The chart shows that short term patients make rapid gains in social skills and approach the range of normal development (85 to 115) within one year of therapy. Long term patients make slower gains but also approach the range of normal development within two years of therapy.



Santa Claus is Jim Stivers of the Scottish Rite in Colorado Springs  
 Photo courtesy of RiteCare Program: Memorial Hospital Pediatric Rehabilitation Services – Colorado Springs



## EXHIBIT F

### Selected Highlights from Individual Partner Programs 2012 Annual Reports

#### Children's Hospital Colorado Aurora & Denver Area Network of Care



**Children's Hospital Colorado at Anschutz Medical Campus, Aurora, Colorado**  
(Source: Children's Hospital Colorado)

1. Two hundred seventy-four (274) children received speech therapy and treatment at Children's Hospital Colorado and its Denver Metro Area clinics with Scottish Rite Foundation financial assistance. These children ranged in age from less than one year through school age, with the majority of children in the age range of three through six years.
2. Thirty-seven (37) children received multidisciplinary cleft palate clinic evaluations.
3. Twenty-eight (28) children and siblings attended the *Talking with Technology Camp* – a week-long mountain camp program for children and young people who use computerized communication devices. In addition to the Scottish Rite Foundation of Colorado, the *Rollie R. Kelley Family Foundation* provided generous financial support for this camp. The 2012 camp was the 26th consecutive year for the camp which is held annually near Empire, Colorado.
4. Five (5) children, three siblings, and nine parents participated in a family-centered, parent-education group to enhance communication skill development in their young child. This special program, *First Steps*, is a weekend learning experience for families considering assistive communication technology for their young child. The *Rollie R. Kelley Family Foundation* provided generous financial support for this program.



**The Rollie Kelley Children – Kathryn, Barbara, and Bruce  
The Rollie R. Kelley Family Foundation members**



**Talking with Technology, CHC Therapy Care Center at Printers Park**

**Children’s Hospital Colorado Therapy Center – Pueblo**  
**(a Network of Care clinic of Children’s Hospital Colorado)**

1. Forty-one (41) children received speech therapy and treatment with financial assistance from the Scottish Rite Foundation. Children from the local Pueblo area as well as children living as far away as Creede and Monte Vista received services at the Pueblo clinic.
2. The clinic has a speech therapist in training to be an augmentative-alternative communication specialist and consultant working with children requiring an electronic communication device. In addition, two speech therapists are preparing to participate in the tele-practice initiative.
3. Clinic staff provided consultation and parent education services to the *Soaring Eagles Center for Autism*. The RiteCare clinic director, Martha Drake, serves on the Center’s Board of Directors.

## **St. Mary's Life Center – Grand Junction**



**St. Mary's Life Center**

1. Eighty-four (84) children received speech-language services with financial assistance from the Scottish Rite Foundation. Children served throughout the year were between the ages of 2 to 7 years. Children up to 13 years of age were served in the summer programs. Children were from the following communities: Grand Junction, Parachute, Mesa and Crawford.
2. Children receiving services at St. Mary's are children with autism, developmental delays, hearing loss, dysfluency, voice disorders, apraxia, other oral motor disabilities, cleft palate, learning disabilities and those children needing augmentative communication.
3. St. Mary's Speech and Language Department staff, in addition to serving children at the Life Center and Hospital, are involved in several local and statewide organizations including: Special Needs Advisory Committee, Interagency Counsel for the Child, The Diagnostic and Evaluation Clinic, Colorado Discoverability, School District Child Find Assessment Team, Cleft Palate Team of Western Colorado, Head & Neck Cancer Team, Children with Special Needs Task Force, Colorado Home Intervention Programs Facilitation, Dyslexia Family Support Group, Mesa County Partnership for Children and Families, Early Childhood Leadership Commission, The Colorado Speech and Hearing Association, and The American Speech-Language Hearing Association.
4. St. Mary's Hospital is a teleconference host site for educational opportunities offered through the Colorado Speech and Hearing Association and Children's Hospital Colorado, allowing for local and regional speech and language therapists to come together and share in ongoing education.



## **Memorial Hospital for Children – Colorado Springs**



**Memorial Hospital Rehabilitation Clinic at Printer's Park**

1. Thirty-six (36) children received speech-language services with financial assistance from the Scottish Rite Foundation. Services are provided at three locations in Colorado Springs: the main facility at Printer's Park Medical Plaza, the Powers clinic in east Colorado Springs, and the Briargate clinic near the North Hospital campus.
2. The program continues to be dedicated to the following specialized services: Autism and Developmental Disorders Clinic, Cleft Lip and Palate Clinic, Feeding Clinic, and Infant Developmental Assessment Clinic.
3. In October 2012 Memorial Health System was leased to University of Colorado Health System. Memorial Hospital for Children outpatient pediatric rehabilitation services are fully licensed under Children's Hospital Colorado as of Spring 2013.

## **Montrose Memorial Hospital – Montrose**



**Clinic Staff with Masons and Dr. Hayes  
attending Rehab Clinic open house**

1. Forty-one (41) children were served with financial assistance from the Scottish Rite Foundation in a five county area by clinics in Montrose and Delta.
2. Special summer programs were offered for school age children, preschoolers, and toddlers.

## University of Northern Colorado – Greeley



**Gunter Hall, UNC Campus - Home to the RiteCare Clinic**

1. Six (6) children were served with financial assistance from the Scottish Rite Foundation of Colorado.
2. UNC's Speech-Language Pathology and Audiology Clinic provides training for graduate students by giving services under supervision during their entire academic program.
3. The *Talking and Listening for Preschoolers* program, on-going since the summer 2007 with support from the *Daniels Fund* and Scottish Rite Foundation which collaborated in helping develop this program. The program focuses on speech production (articulation and phonology) with a secondary language-literacy focus (development of vocabulary and concepts, oral and written sound and word awareness, comprehension and expression of narratives and stories). Children are in the program for 1½ hours twice weekly. The parents meet with the speech-language pathologist and graduate student clinicians to share information and learn about language development strategies.
4. The *Speaking and Signing Stories* program, which also began in the summer of 2007 as a result of the *Daniels Fund*/Scottish Rite Foundation collaboration, provides therapy for children who are deaf or hard-of-hearing. It is a literature-based program that targets all components of language through the use of both speech and American Sign Language.

## University of Colorado – Boulder



**Speech-Language Hearing Center - CU-Boulder Campus**

1. Thirty-three (33) children were served with financial assistance from the Scottish Rite Foundation.
2. CU's Speech Language and Hearing Center on the Boulder campus provides training for graduate students by giving services under supervision of certified clinical faculty during their entire academic program.
3. The Center's focus is to identify and serve young children and their families in Boulder County and surrounding areas who may not otherwise receive speech and language therapy due to a lack of funding for therapeutic services.
4. The *Story of Friendship* program focuses on specific communication and language learning needs of children with autism spectrum disorder (ASD) in the natural context of their school environment and incorporates peers as friends. It is a community-based program housed at Creekside Elementary School in the Boulder Valley School District.
5. The Space Camp and Space Exploration programs offer special services for children identified with Asperger's Syndrome and their friends – focusing on the specific language, communication, and language learning needs of children identified with ASD.

## **Children's Speech and Reading Center – Fort Collins**



**Two Children at the CSRC Clinic**

1. One hundred sixty-four (164) children were served with financial assistance from the Scottish Rite Foundation. Forty-eight (48) children received speech-therapy services and 116 children received early literacy services in area preschools.
2. Free speech-language and reading screens were offered on an on-going basis with families coming from the communities such as Fort Collins, Loveland, Greeley, Estes Park, Johnstown, Berthoud, Windsor, and Wellington.
3. The Center provided a variety of individual and small group programs for early childhood communication and reading readiness.

## **Sterling Regional MedCenter – Sterling**

1. Two children were served with financial assistance from the Scottish Rite Foundation.
2. Speech/Languages services are provided on an individual basis and emphasize parent involvement and education during the sessions to achieve maximum carry-over of skills into the child's daily routines. The Scottish Rite Foundation of Colorado remains committed to making its services available for this clinic partner.

## **Arkansas Valley Regional Medical Center – La Junta**

1. Two children were served with financial assistance from the Scottish Rite Foundation of Colorado.
2. This center is the only hospital or clinic in the southeastern Colorado area (on the Highway 50 corridor east of Pueblo) that provides speech-language pathology services for children, except in the school setting.

## **The Piñon Project – Cortez**

1. One hundred fifty-seven (157) children were served with financial assistance provided by the Scottish Rite Foundation.
2. The program funded by the Scottish Rite Foundation is known as the Treasure Chest Program, a preschool-age early language development program. It serves needy and low income children in southwestern Colorado and is in great demand by families of preschoolers.
3. The Treasure Chest Program was conducted at the following locations: Cortez (Cortez Library, Children’s Kiva, Trinity Lutheran Preschool, Por Dia Preschool, and The Pinon Project), Dolores (Teddy Bear Preschool and Dolores Library), Dove Creek (Seventh St. Preschool and Doves Nest), and Mancos (Mancos Head Start).
4. The theme chests were also being used in trainings with preschool teachers at Ute Mountain Ute Tribe in Towaoc, CO by the school readiness coordinator with the local Early Childhood Education Council.


## **Western Slope Head Start (Rocky Mountain SER) – Grand Junction**

1. Fifty-seven (57) children were served in the Treasure Chest Program with funding provided by the Scottish Rite Foundation of Colorado.
2. This Treasure Chest Program provides education and training for children and their families in a home-based environment.
3. Program staff coordinate with School District 51 and St. Mary’s Life Center to identify children who need services for speech/language delays.



**Two Brothers Supporting Each Other - CHC Talking with Technology Camp**

## Exhibit G

<b>Scottish Rite Foundation and RiteCare Partner Addresses and Phone Numbers</b>	
<p><b>Scottish Rite Foundation of Colorado</b> 1370 Grant Street Denver, CO 80203 303-861-2410 (toll free: 866-289-6797) www.scottishritefoundation.org ritecare@scottishritefoundation.org</p>	<p><b>Children’s Hospital Colorado</b> Department of Audiology, Speech Pathology, and Learning Services 13123 E. 16<sup>th</sup> Ave., B-030 Aurora, CO 80045 720-777-6800</p>
<p><b>Arkansas Valley Regional Medical Center</b> Rehabilitation Services 1100 Carson Avenue La Junta, CO 81050 719-383-6456</p>	<p><b>Children’s Speech and Reading Center</b> 1330 Oakridge Drive Fort Collins, CO 80525 970-419-0486</p>
<p><b>Children’s Hospital Colorado Therapy Center – Pueblo</b> 704 Fortino Blvd, Suite A Pueblo, CO 81008 719-595-0829</p>	<p><b>Children’s Hospital Colorado Therapy Care at Printers Park</b> 175 S. Union Blvd., Suite 255 Colorado Springs, CO 80910 719-305-8000</p>
<p><b>Montrose Memorial Hospital</b> Mountain View Therapy 800 South Third Street Montrose, CO 81401 970-240-7369</p>	<p><b>St. Mary’s Life Center Language Development Clinic</b> 1100 Patterson Road Grand Junction, CO 81506 970-298-6158</p>
<p><b>Sterling Regional MedCenter</b> Rehabilitation Services 615 Fairhurst Street Sterling, CO 80751 970-526-4818</p>	<p><b>University of Northern Colorado</b> Audiology and Speech Language Sciences Gunter Hall, Campus Box 140 Greeley, CO 80639 970-351-1587</p>
<p><b>The Piñon Project</b> 300 N. Elm St. P.O. Box 1510 Cortez, CO 81321 970-564-1195</p>	<p><b>Western Slope Head Start</b> Rocky Mountain SER 235 North 7<sup>th</sup> Street, Suite A Grand Junction, CO 81591 970-243-9318</p>
<p><b>University of Colorado – Boulder</b> Speech, Language and Hearing Sciences 2501 Kittredge Loop Road Campus Box 409 Boulder, CO 80309 303-492-5375</p>	 <p style="text-align: center;"> <b>RiteCare</b>          SPEECH          LANGUAGE          AND          LITERACY          Scottish Rite Masons          Helping Children Communicate          Scottish Rite Foundation of Colorado     </p>