

Helping Children Communicate!



2013 State of the Foundation Report

Scottish Rite Foundation of Colorado
a 501(c)(3) public charity
www.scottishritefoundation.org



**Message from the
Sovereign Grand Inspector General
in Colorado and President of the
Scottish Rite Foundation of Colorado**

**The Honorable
Stephen M. Munsinger, 33^o**

I am pleased to present the 2013 State of the Foundation Report for the Scottish Rite Foundation of Colorado – commonly referred to as Colorado RiteCare. This report summarizes our work with childhood language disorders giving special focus on the performance of our eleven speech-language partners in Colorado. The Foundation's work is an important way in which Masons help the community through the Masonic teaching of charity.

At the end of 2013 our net assets totaled \$22.9 million. During the year we distributed \$979 thousand in grants to our RiteCare partners – monies which helped make it possible for children to receive speech-language care – and in graduate student scholarships

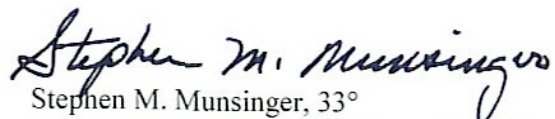
Four significant items regarding our work in 2013 are worthy of special mention.

- ✓ Colorado RiteCare enabled 975 children to receive speech-language services in 20 communities.
- ✓ Colorado RiteCare awarded \$20,000 in scholarships – four \$5,000 scholarships for graduate work in speech-language pathology.
- ✓ Colorado RiteCare administered its statewide program with 3.6 percent overhead in 2013.
- ✓ Colorado RiteCare through Children's Hospital Colorado began expansion of speech-language therapy over the internet (telepractice) to reach Colorado children in rural or underserved areas.

This report provides information about this remarkable program of service to Colorado families. As you review these pages please keep in mind that about 10 percent of all children are at-risk for some type of speech-language disorder. Whether it be delayed speech development, autism, dyslexia, or many of the other speech-language disorders, Colorado RiteCare remains faithful to its mission and vision of striving to provide every child in Colorado with speech-language disorders the opportunity to receive treatment and care.

On behalf of our Trustees, we are honored to be committed to this work and to be associated with our outstanding partners who deliver the speech-language services. We all thank our many supporters and friends for helping make this work possible – now and in the future.

Sincerely,



Stephen M. Munsinger, 33^o
Sovereign Grand Inspector General in Colorado



WHAT WE DID IN 2013

Scottish Rite Foundation of Colorado

1370 Grant Street

Denver, Colorado 80203-2347

303-861-2410

www.scottishritefoundation.org

RiteCare Service Profile

- ▣ \$35 million spent on speech-language services between 1953 and 2013 - \$979 thousand in 2013
- ▣ 20 Colorado communities served by 10 RiteCare partners with our financial support in 2013
- ▣ 17,547 children served to date ~ 975 in 2013
- ▣ 40 graduate scholarships totaling \$200,000 awarded to date - four scholarships awarded in 2013



CHILDREN
SERVED IN 2013

975 children

Denver and
North/Northeast
499 children

Colorado Springs and
South/Southeast
83 children

Grand Junction and
West/Southwest
393 children

Our Donors Make This Work Possible

- ▣ 2013 donor gifts - \$119,379
- ▣ 2013 total revenue and support - \$2.4 million (made possible by prior donations & gifts)

The Scottish Rite Foundation of Colorado completed 60 years of service in 2013

Overhead Rate of 3.6% for 2013

The Scottish Rite Foundation of Colorado is a 501(c)(3) public charity, managed by a 7-member Board of Trustees. The Sovereign Grand Inspector General in Colorado - Honorable Stephen M. Munsinger, 33° - serves as its President and Chief Executive Officer.

Table of Contents

	<u>Page</u>
Introduction	1
Scottish Rite Foundation of Colorado Governance and Management	2
Scottish Rite Foundation of Colorado Mission	3
Scottish Rite Foundation of Colorado Vision	3
Rite Care Partners	4
Clinical Therapy Programs	4
Early Language Development Programs	4
Highlights of the Year 2013	5
Children Served	5
Grants and Scholarships Funded by Colorado RiteCare	6
Financial Trends	6
Net Assets Chart (2000-2013)	8
Grant Distributions as a Percent of Net Assets Chart (2000-2013)	8
Grants Budget Chart (2000-2013)	9
Grant Distributions Chart (2000-2013)	9
Fundraising in 2013	10
Recognition of Special Friends of the Foundation	10
Special Award Recipients	10
Graduate Student Speech-Language Pathology Scholarship Recipients	13
RiteCare Society Members	15
Foundation Fellows	16
Exhibits	17
Exhibit A – Audited Statement of Financial Position	18
Exhibit B – Audited Statement of Activities	19
Exhibit C – Comparison of Recent Three-Year Financial Trends	20
Exhibit D – Recap of RiteCare Children Served in Colorado	21
Exhibit E – Outcomes Evaluation of Children’s Developmental Progress During Therapy	22
Exhibit F – Selected Highlights from Individual Partner Programs	25
Children’s Hospital Colorado – Aurora & Denver Area	25
Children’s Hospital Colorado Therapy Center – Pueblo	26
St. Mary’s Life Center – Grand Junction	27
Children’s Hospital Colorado at Memorial Hospital – Colorado Springs	28

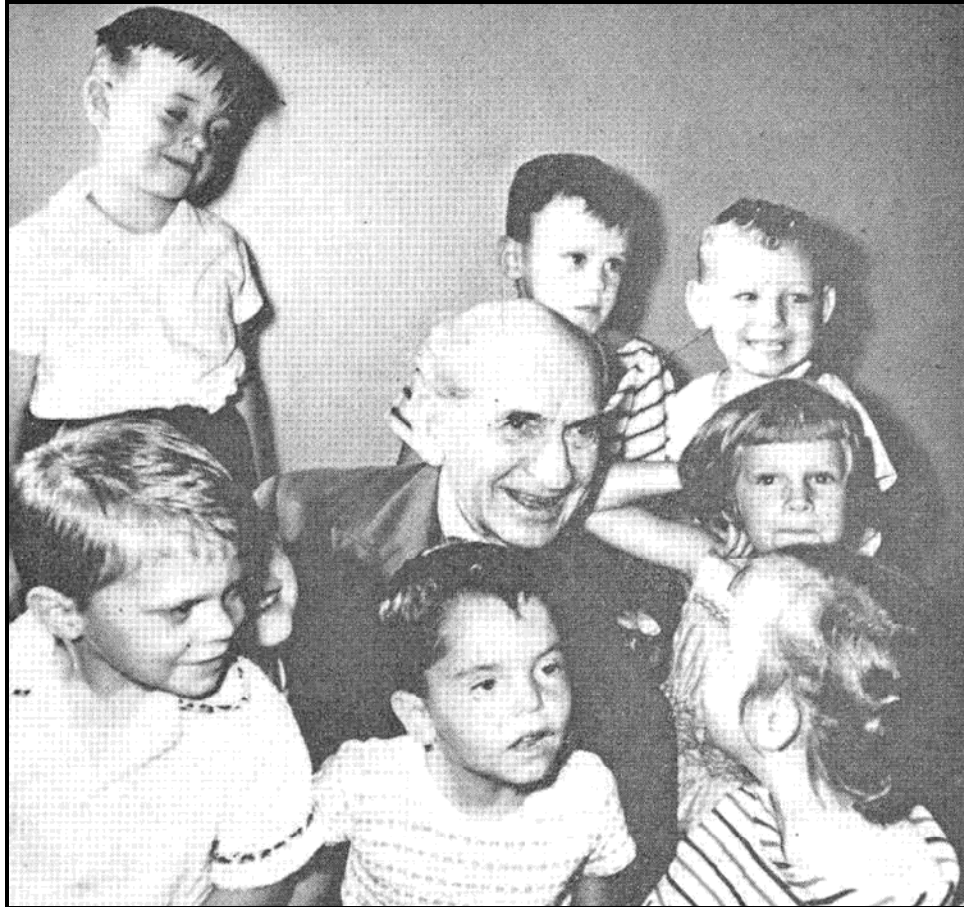
Table of Contents (continued)

	<u>Page</u>
Montrose Memorial Hospital – Montrose	28
University of Northern Colorado – Greeley	29
University of Colorado – Boulder	30
Sterling Regional MedCenter – Sterling	30
Arkansas Valley Regional Medical Center – La Junta	31
Children’s Speech and Reading Center – Fort Collins	31
The Piñon Project – Cortez	31
Western Slope Head Start – Grand Junction	32
Exhibit G – Scottish Rite Foundation and RiteCare Partner Contacts	33

**Home and Birthplace
of the
Scottish Rite Foundation of Colorado**



**Denver Consistory
Ancient and Accepted Scottish Rite of Freemasonry
1370 Grant Street
Denver, Colorado**



**Judge Haslett P. Burke and RiteCare Children
ca 1953
Children's Hospital Colorado**

Judge Burke was then-Sovereign Grand Inspector General in Colorado and the first president of the Scottish Rite Foundation of Colorado. At the time the Judge served on the Colorado Supreme Court, having been a former Chief Justice on several terms.

2013 State of the Foundation Report

Introduction

The Scottish Rite Foundation of Colorado (Foundation) was established in 1953 by Scottish Rite Masons in Denver, Colorado as a not-for-profit corporation. The Foundation is approved by the Internal Revenue Service as a IRS Code Section 501(c)(3) public charity. The IRS approval letter, issued in 1954, was reissued in August 2006 by request of the Foundation.

The Foundation was established to provide financial assistance to help families of children with language disorders receive clinical therapy treatment. This is now known nationally and in Colorado as the RiteCare Childhood Language Program. The Colorado RiteCare Program is the first program of its kind in the United States. Since 1953, all States in the Southern Jurisdiction of the Scottish Rite – to which Colorado belongs and which includes 35 States and the District of Columbia – have each organized a RiteCare Childhood Language Program. The Scottish Rite Foundation of Colorado is also a leader in the field by being one of the first organizations in the United States to promote speech and language therapy for preschool-age children.

The Foundation employs no professional caregivers and has no clinical infrastructure. All therapy and related services are provided by professionally qualified and certified speech-language pathologists and learning specialists. The Foundation provides grants to non-profit partner organizations for defraying the cost that would otherwise be charged to families. The partners are community-based organizations most of which are not-for-profit hospitals.



**Founding Father
William G. Schweigert, 33°**

Financial assistance applications are made directly to the partner clinic by the applying family and are jointly reviewed by the clinic director and a Foundation committee appointed specifically for this purpose by the President of the Foundation's Board of Trustees. The Foundation's appraisal philosophy affirms the importance of family participation by financially contributing to the care of their child, even though the family's contribution may be minimal. The determination of the amount of the Foundation's financial assistance is based on a graduated scale related to family income and

need. In addition, the assistance is provided after all other sources of financial support are exhausted.

The Foundation's operational characteristics include:

1. Comprehensive speech-language therapy services
2. Community-based partners
3. Statewide coverage
4. Professionally certified speech pathologists employed by partnering organizations
5. Focus on preschool-age children
6. Professionally managed RiteCare clinics, centers, and Foundation operations
7. Overhead cost efficiency

Speech therapy and related services are delivered by nationally certified speech-language pathologists, learning specialists, and related professionals. Certification requires a graduate college degree in the specialty field. More than 200 speech pathologists, audiologists, and learning specialists are employed by the Foundation's partners in Colorado. Each partnering organization has established credentialing requirements for its professional staff of caregivers.

Service is typically provided to children with disabilities – without regard to race, color, religion, gender, or national origin. Disabilities may include language delay, hearing loss, cleft lip and palate, autism spectrum disorder, Down syndrome, brain injury, dyslexia, voice disorders, fluency dysfunction and other disorders of speech and language development.

Scottish Rite Foundation of Colorado Governance and Management



L to R: Vern Ingraham, Lee Schlessman, Steve Munsinger, Karl Hinkle, Rick Frohlick, Deborah Hayes, Gerry Ford, John Groves, Tom Magnuson

The Foundation is governed by a seven-member Board of Trustees which establishes policy and overall guidance for Foundation operations. The Board receives no compensation for time spent and services provided. At December 31, 2013, the Board consisted of the following individuals.

Stephen M. Munsinger, President (Denver)
John W. Groves, Vice President (Grand Junction)
Lee E. Schlessman, Treasurer (Denver)
Gerald A. Ford (Arvada)
Richard G. Frohlick (Denver)
Thomas R. Magnuson (Kansas, Colorado member)
Karl J. Hinkle (Colorado Springs)

The day-to-day operations of the Foundation are the responsibility of the Executive Secretary, Vernon B. Ingraham (Denver).

The Foundation's flagship partner is Children's Hospital Colorado (Children's Colorado). Since 1953 grants to Children's Colorado totaled \$25 million (71 percent of all grants awarded by the Foundation totaling \$35 million). Deborah Hayes, Ph.D., chairs the Department of Audiology, Speech Pathology, and Learning Services at Children's Colorado. Since 1983 she has occupied this position and, as such, serves as an ex officio member of the Foundation's Board of Trustees. In 2003 the Foundation completed a \$2 million fundraising campaign to establish the *Kelley Family/Schlessman Family Scottish Rite Masons Chair in Childhood Language Disorders* at Children's Hospital Colorado. Dr. Hayes occupies this distinguished chair and as such has responsibility for coordinating all Foundation-supported RiteCare operations in Colorado.



**RiteCare Child
CHC Therapy Care Center,
Pueblo**

In addition, the Board has two standing committees to provide support for Foundation operations. These are the Finance Committee and the Long Range Planning Committee. The Finance Committee, comprised of three Trustees and one adhoc member (Executive Secretary), meets quarterly with the Foundation's investment portfolio managers. The Long Range Planning Committee, consisting of three Trustees and two adhoc members (Dr. Hayes and the Executive Secretary), meets at least annually to review and recommend strategic planning initiatives for the Board of Trustees' consideration.

In 2013 the Foundation's administrative overhead rate was 3.6 percent, representing less than 5 cents spent for each revenue dollar received. Administration expenses of \$83,633 in comparison to total revenues of \$2,354,321 reflect well on the Board of Trustees in their management of the Foundation.

Scottish Rite Foundation of Colorado Mission

The mission of the Scottish Rite Foundation of Colorado, as officially endorsed by the Board of Trustees, is to "enhance the quality of life for Colorado's children and their families by supporting high quality, collaborative programs for the prevention and treatment of childhood language disorders." The Foundation accomplishes this by:

1. Providing sustaining support to children, families, and communities for the prevention and treatment of childhood language disorders.
2. Helping partner-programs provide speech, language, and learning therapy for children; parent education; and family and community language enrichment programs.
3. Supporting student and professional education and training.

Scottish Rite Foundation of Colorado Vision

The vision of the Scottish Rite Foundation of Colorado, as officially endorsed by the Board of Trustees, is to "ensure that all Colorado children with language disorders have the opportunity to receive treatment and care."

RiteCare Partners

In 2013 the Scottish Rite Foundation of Colorado provided grants to 10 organizations providing either clinical therapy programs or early childhood language development programs. See Exhibit D for children served by each organization and Exhibit G for a list of Scottish Rite Foundation and RiteCare partner addresses and phone numbers. The partners who delivered services in 2013 include the following organizations.

Clinical Therapy Programs

Five hospital-based programs

- 1) Children's Hospital Colorado – Aurora, Littleton, Parker, Broomfield, Pueblo, & Colorado Springs
- 2) Mary's Life Center – Grand Junction
- 3) Montrose Memorial Hospital – Montrose
- 4) Sterling Regional MedCenter – Sterling
- 5) Arkansas Valley Regional Medical Center – La Junta

Two university-based programs

- 1) University of Northern Colorado – Greeley
- 2) University of Colorado – Boulder

One not-for-profit agency – Children's Speech and Reading Center – Fort Collins

Early Language Development (Treasure Chest) Programs

Two not-for-profit preschool programs

- 1) The Piñon Project – Cortez
- 2) Western Slope Head Start – Grand Junction



RiteCare Partner Main Office Locations

The 2013 clinical therapy programs were offered at partnership locations including satellite clinics of certain partners – totaling 16 communities: Aurora, Boulder, Broomfield, Colorado Springs, Delta, Fort Collins, Grand Junction, Greeley, La Junta, Littleton, Loveland, Montrose, Parker, Pueblo, Ridgway, and Sterling.

The 2013 early (preschool-age) language development programs were offered at partnership locations including associated preschool programs in outlying locations – totaling five communities: Cortez, Dolores, Dove Creek, Grand Junction, and Mancos.

Highlights of the Year 2013

The year 2013 was highly successful with regard to the work of the Scottish Rite Foundation of Colorado and its RiteCare Childhood Language Program. See Exhibit F for a summary of partner annual report highlights. Foundation highlights for the year include:

1. Providing services to 975 children with financial support from the Scottish Rite Foundation of Colorado including speech therapy and/or related services for 746 children and early language and literacy services (Treasure Chest Program) for 229 children.
2. Awarding four scholarships of \$5,000 each to second-year graduate students at the University of Colorado – Boulder and the University of Northern Colorado. Scholarships are awarded in the name of Dwight A. Hamilton, former Sovereign Grand Inspector General in Colorado and former President of the Foundation (1994-2005)
3. Conducting outreach programs in partnership with the following RiteCare clinics: Children’s Hospital Colorado in Aurora, St. Mary’s Life Center in Grand Junction, the Children’s Hospital Colorado clinic in Pueblo, UNC in Greeley, and CU in Boulder. This university outreach included discussions with speech-language pathology graduate students. In addition, presentations were made to Scottish Rite Reunion Classes in Denver, Colorado Springs, and Grand Junction.
4. Participating in special fundraisers for the Foundation such as the Pints Pub Scotch Tasting fundraiser – the seventh year this fundraiser has been generously hosted by Pints Pub in Denver.
5. Expansion of speech-language therapy over the internet (telepractice) to reach Colorado children in rural or underserved communities.

Children Served

Since the Foundation’s beginning in 1953, 17,547 children have been served through its RiteCare partners. For the 12 months ended December 31, 2013, the Foundation served 975 children in Colorado. See Exhibit D for more details.

	<u>2013</u>	<u>1953 - 2013</u>
Denver and North/Northeast Colorado	499	12,162
Grand Junction and West/Southwest Colorado	393	3,969
Colorado Springs and South/Southeast Colorado	<u>83</u>	<u>1,416</u>
Total Children Served	<u>975</u>	<u>17,547</u>

The RiteCare program directors evaluate children’s progress throughout Colorado by means of the Child Development Inventory. Based on an inventory of progress of 1,435 RiteCare children since the evaluation’s inception in 2005, the most robust developmental gains are noted in the area of social-communicative behaviors. See Exhibit E for details.

Grants and Scholarships Funded by Colorado RiteCare

In 2013 program support funded by the Foundation totaled \$979,217, representing 4.3 percent of net assets as of December 31, 2013 (see Exhibit B).

	<u>2013</u>	<u>Inception - 2013</u>
Children’s Hospital Colorado – Aurora	\$ 430,288	\$ 23,977,982
Children’s Hospital Colorado Therapy Center – Pueblo	54,419	1,344,913
Children’s Hospital Colorado at Memorial Hospital – Colorado Springs	<u>44,917</u>	<u>44,917</u>
Children’s Hospital Colorado Total	529,624	25,367,812
Parkview Hospital – Pueblo	-0-	905,817
Memorial Hospital for Children – Colorado Springs	-0-	1,520,738
St. Mary’s Life Center – Grand Junction	139,765	2,832,492
Montrose Memorial Hospital – Montrose	61,530	1,182,351
Sterling Regional MedCenter – Sterling	481	16,770
Arkansas Valley Regional Medical Center – La Junta	4,177	38,147
University of Northern Colorado – Greeley	9,122	313,992
University of Colorado – Boulder	27,117	175,258
Children’s Speech & Reading Center – Fort Collins	95,401	1,434,059
The Piñon Project – Cortez	60,000	522,940
Western Slope Head Start – Grand Junction	32,000	251,000
Let’s Talk! Speech Therapy – Canon City	-0-	588
Graduate Scholarships	<u>20,000</u>	<u>200,000</u>
Total Program Support	<u>\$ 979,217</u>	<u>\$ 34,761,964</u>

In 2013 the statewide average annual cost-per-child for therapy-related services was \$1,183 – a modest investment for such substantial returns in language and communication development. Through our investment in their future, many children with speech and language disabilities received help.

Also, in 2013 the average annual cost-per-child for the Treasure Chest programs was \$360, enabling many families to receive learning materials and guidance in how to use them in working with their children.

Financial Trends

Total program expenditures in support of the Colorado RiteCare Childhood Language Program include, in addition to speech therapy and related services, the following.

- (1) Endowed Chair at Children’s Hospital Colorado (Children’s)
- (2) Capital Improvements such as the Early Language Intervention Room at the University of Northern Colorado and the Speech Therapy Group Room at Children’s

- (3) Equipment purchases for various clinics
- (4) Graduate scholarship awards

These expenditures are summarized as follows.

	Current Year <u>2013</u>	Last Ten Years <u>2004 - 2013</u>	Last 60 Years <u>Inception - 2013</u>
Speech Therapy and Related Services	\$ 959,217	\$ 13,751,643	\$ 31,635,849
Kelley Family/Schlessman Family Scottish Rite Masons Chair in Childhood Language Disorders	-	-	2,000,000
Group Therapy Room Special Projects		255,948	255,948
Equipment for Clinic Therapy Programs	-	100,000	670,167
Graduate Scholarships in Speech Pathology	<u>20,000</u>	<u>190,000</u>	<u>200,000</u>
Total Program Expenditures	<u>\$ 979,217</u>	<u>\$ 14,297,591</u>	<u>\$ 34,761,964</u>

The Program Grants expenditures in the 2013 audited financial statements total \$979,217.

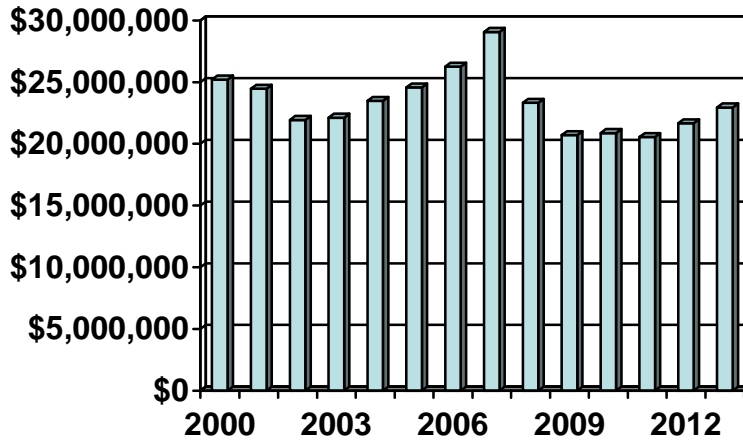
During 2004-2013, the Foundation's net assets ranged from a low of \$20.5 million at the end of 2011 to a record high of \$29.1 million at the end of 2007. Net Assets as of 12/31/2013 total \$22,943,779. See Exhibits A and B for the audited financial statements



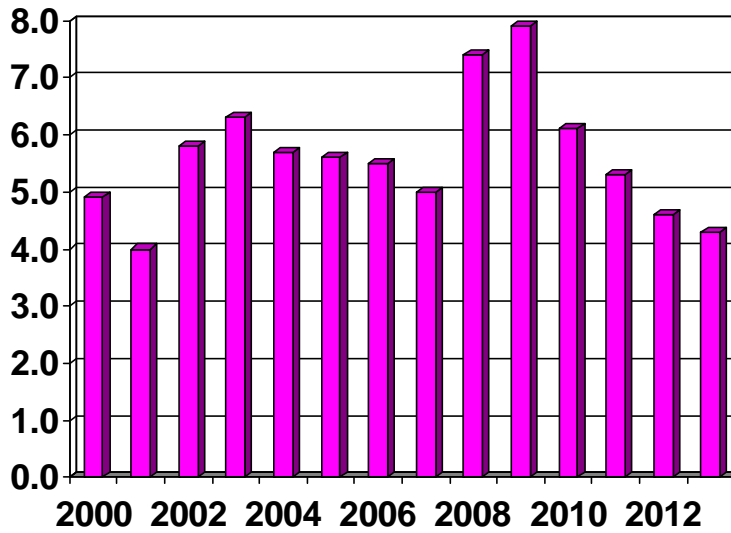
**RiteCare Families at Pueblo Clinic Annual Picnic at the Zoo
Sponsored by Southern Colorado Scottish Rite Masons**

The following charts present trends since 2000 for grant budgets, grant distributions, and the end-of-year net asset base. They illustrate the Board of Trustees' dedication to sustaining support for Colorado RiteCare.

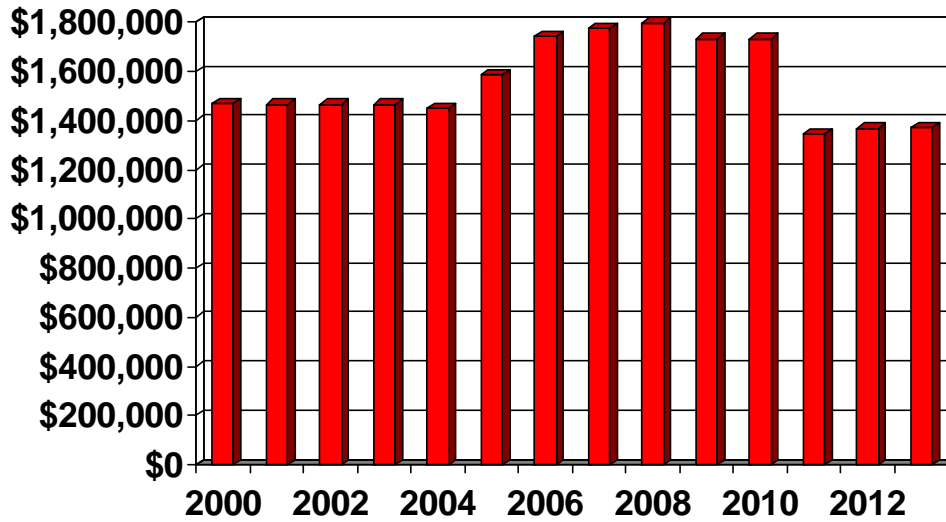
Net Assets 2000-2013



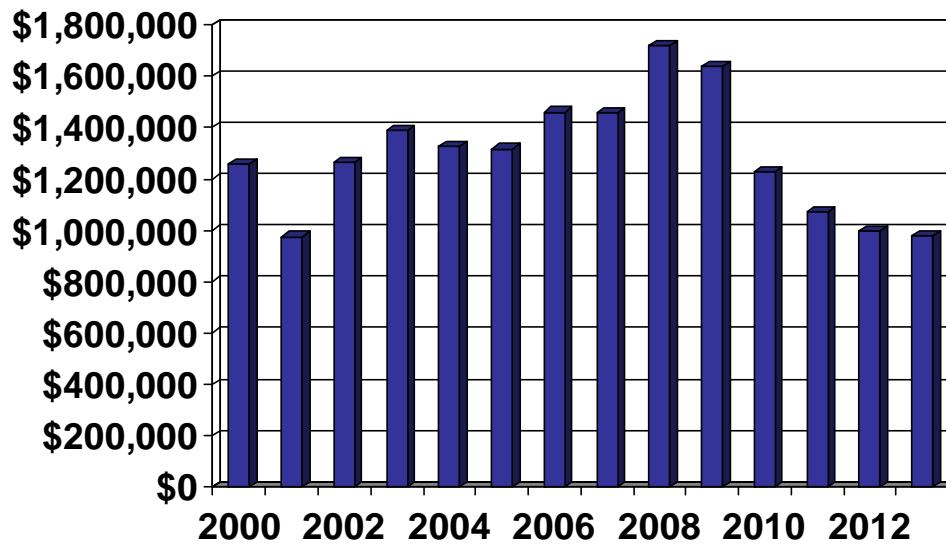
Grant Distributions as a Percent of Net Assets 2000-2013



Grants Budget 2000-2013



Grant Distributions (based on approved billings) 2000-2013



Fundraising in 2013

In 2013 the Foundation received cash gifts and donations totaling \$119,379 detailed as follows.

	<u>Total Gifts</u>	<u>Restricted Gifts</u>	<u>Unrestricted Gifts</u>
Estates and Trusts	\$ 10,000	\$ 0	\$ 10,000
Individual Donations	57,879	20,000	37,879
Masonic Organizations	0	0	0
Non-Masonic Organizations	<u>51,500</u>	<u>0</u>	<u>51,500</u>
	<u>\$ 119,379</u>	<u>\$ 20,000</u>	<u>\$ 99,379</u>

Temporary restrictions typically pertain to several purposes including certain gifts designated for the Talking with Technology Camp and the First Steps Camp which is the \$20,000 gift amount shown as restricted; and gifts for the Early Language Intervention Program (Treasure Chest Program).

The 2013 annual appeal drive generated \$62,297 in donations.

Recognition of Special Friends of the Foundation

The Scottish Rite Foundation of Colorado is deeply grateful to its many friends for their support in helping children with language disorders. Between January 2000 and December 2013 more than 5,020 financial gifts were made to the Foundation. Hundreds of donors are annually helping to make the Foundation's mission and vision become a reality for thousands of children in the future.

Several categories of the Foundation's friends are worthy of special mention. These individuals include:

- Honors of the Foundation Award Recipients
- Distinguished Service Award Recipients
- Graduate Student Speech-Language Pathology Scholarship Recipients
- RiteCare Society Members
- Foundation Fellows

Special Award Recipients

The Scottish Rite Foundation of Colorado presents two major awards in recognition of individuals and/or organizations that have helped to make a difference.

The highest award is the "Honors of the Foundation." Its purpose is to recognize individuals whose contributions have significantly enhanced the work of the Foundation. The award is presented to either Masons or non-Masons whose personal philanthropy, dedicated leadership, and/or sustaining support have enabled the Foundation to achieve its mission and vision. A suitable trophy is presented to the recipient.

The second highest award is the “Distinguished Service Award.” Its purpose is to recognize individuals or groups who contribute time or talents to improving services in RiteCare programs. The award is presented to either Masons or non-Masons whose contributions in time and/or talents have significantly improved the operations of the Foundation or care of children in the RiteCare programs.

Honors of the Foundation

2004	John I. Ladd, 33°
2005	Dwight A. Hamilton, 33°
2006	William D. Hewit, 33°
2007	Bruce A. Kelley The Rollie R. Kelley Family Foundation Kathryn Kelley Huwaldt The Rollie R. Kelley Family Foundation Barbara J. Kelley The Rollie R. Kelley Family Foundation
2008	George, 32° KCCH, & Neva Frohlick Deborah Hayes, Ph.D. Kelley Family/Schlessman Family Scottish Rite Masons Chair in Childhood Language Disorders, Children’s Hospital Colorado
2009	Ben M. Crossno, 33°
2010	Lee E. Schlessman, 33°, Grand Cross
2013	Ronald D. Birely, 33°



**RiteCare Children and Therapist
University of Colorado - Boulder**

Distinguished Service Award

2004	Denver Consistory Ladies
2005	John S. Russell, 33°
2006	Ashley S. Buss, 32° KCCH
2007	Sandra D. Morrison Vice President, Children's Hospital Colorado Foundation
	Valerie Hernandez Special Assistant to Deborah Hayes, Ph.D. Children's Hospital Colorado
2008	Norman L., 33°, & Juanita Hoff
	James L. Nunn, 33°
2009	Virginia Howey Director, The Piñon Project
	Otsie Stowell, 32° KCCH
2010	James L. Martin III, Ph.D. Foundation Webmaster
2011	Kathleen Fahey, Ph.D. UNC RiteCare Director

Southern Colorado Scottish Rite Masons



RiteCare Child and Therapist
Children's Speech & Reading Center,
Fort Collins

Graduate Student Speech-Language Pathology Scholarship Recipients

The graduate scholarship program assists second-year graduate students in speech-language pathology complete their education. It also encourages (but cannot require) them to seek employment in Colorado. Through 2013, 40 scholarships totaling \$200,000 have been awarded.

In 2003 the Colorado Masons' Benevolent Fund Association, in collaboration with the Foundation, initiated a graduate scholarship in speech-language pathology. The Association is the main charitable arm for the Most Worshipful Grand Lodge of AF and AM of Colorado. Between 2003 and 2012 the Association awarded 20 scholarships totaling \$100,000.

In 2005 the Scottish Rite Foundation of Colorado initiated a graduate scholarship in speech-language pathology. This scholarship is named in honor of former Sovereign Grand Inspector General and President of the Foundation, Dwight A. Hamilton. Between 2005 and 2013 the Foundation awarded 20 scholarships totaling \$100,000.

In addition, a national scholarship in speech-language pathology has been awarded to five Colorado graduate students by the *Supreme Council* of the Ancient and Accepted Scottish Rite of Freemasonry for the Southern Jurisdiction. This scholarship is known as the Sam and Millie Hilburn Scholarship in the field of Childhood Language Disorders. A total of \$30,000 has been awarded.

Sam and Millie Hilburn Scholarship (Supreme Council) in the field of Childhood Language Disorders

2001	Vindi Wells	University of Northern Colorado
2005	Marybeth Ames	Ph.D. Candidate & Speech Pathologist at Children's Speech & Reading Center in Fort Collins
2010	Rebecca L. McNeil	University of Colorado
2010	Christina D. Wilkins	University of Colorado
2012	Melissa K. Klaer	University of Colorado

Dwight A. Hamilton Scottish Rite Foundation Graduate Scholarship in Speech-Language Pathology

2005	Joni M. Oldroyd	University of Colorado
2005	Rachael E. Glustrom	University of Colorado
2006	Amy M. Mulligan	University of Colorado
2006	Laura M. Wilson	University of Colorado
2007	Danielle K. Cavallaro	University of Colorado
2007	Amanda Vargo	University of Colorado
2008	Laura K. Jordan	University of Northern Colorado
2008	Jennifer M. Leggette	University of Colorado
2009	Kimberly A. Turner	University of Colorado
2009	Meghan K. Fitzgerald	University of Colorado
2010	Rebecca L. McNeil	University of Colorado
2010	Hannah L. Shippey	University of Colorado
2011	Jocelyn R. Essler	University of Colorado
2011	Loriann Schwartz	University of Colorado
2012	Madison L. Atkins	University of Colorado
2012	Sheryl L. Schaller	University of Colorado

2013	Miranda Alexa Aragon	University of Colorado
2013	Alexandra Bresler	University of Northern Colorado
2013	Sarah E. Gyory	University of Colorado
2013	Noelle Mitchell	University of Colorado

**Colorado Masons' Benevolent Fund Association
Graduate Scholarship in Speech-Language Pathology**

2003	Kyle R. Weber	University of Northern Colorado
2003	Mandy J. Hansen	University of Northern Colorado
2004	Brianne Lay	University of Northern Colorado
2004	Marie R. Pechous	University of Northern Colorado
2005	Jill Emeson	University of Northern Colorado
2005	Sara E. Rode	University of Northern Colorado
2006	Kristine D. Leedy	University of Northern Colorado
2006	Rachel K. Moore	University of Northern Colorado
2007	Lindsey Greer	University of Northern Colorado
2007	Adrianna Ackerman	University of Northern Colorado
2008	Jennifer Wiedmeier	University of Northern Colorado
2008	Sara N. Robinson	University of Northern Colorado
2009	Kristin M. Michie	University of Northern Colorado
2009	Alyssa J. Winbourne	University of Northern Colorado
2010	Natasha Maria	University of Northern Colorado
2010	Elisabeth A. Robertson	University of Northern Colorado
2011	Catherine C. Finkenstaedt	University of Northern Colorado
2011	Adriane N. Zachary	University of Northern Colorado
2012	Bethany K. Levin	University of Northern Colorado
2012	Carrie M. Arensmeyer	University of Northern Colorado



**Audiology, Speech Pathology and Learning Service Management Team
at Children's Hospital Colorado**

RiteCare Society Members

The RiteCare Society was established by the Scottish Rite Foundation of Colorado in 2007 as an association of former and current volunteers who support the work of the Foundation. Society membership is earned by volunteering the equivalent of 30 hours in service to the Foundation. Current Society members are listed below according to Scottish Rite's organizational structure in Colorado.

RiteCare Society Members

Valley of Denver

Fran Adams
Kay Applegate
Robert W. Applegate, 33°
Virginia Arner
Wayne G. Arner, 33°
Esther M. Bartholic
Robert L. Bartholic, 33°
Carol Bowser
Rosie Anderson Brandel
Milton Brandwein, 33°
Ashley S. Buss, 32° KCCH
Phyllis Campbell
Marie Cox
G. Robert Dinkel, 32° KCCH
Lula Ellsworth
Donald L. Emarine, 33°
Glenita Emarine
Gerald A. Ford, 33°
Richard G. Frohlick, 33°
Donna Glasscock
James W. Glasscock, 33°
Robert W. Gregory, 33°
Tiz Hamilton
Ruth Harlan
Deborah Hayes, Ph.D.
Judi Hessel
Michael E. Hessel, 33°
Valerie Hernandez
Juanita Hoff
Norman L. Hoff, 33°
Vernon B. Ingraham, 33°, Grand Cross
Charles G. Johnson, 33°
Judi Lehman
Thomas R. Magnuson, 33°
June McMullen
Stephen M. Munsinger, 33°, SGIG
Eileen Naiman
Alice Norris

Robert F. "Trey" Perrin, 32° KCCH
Claudene Preston
John S. Russell, 33°
Lee E. Schlessman, 33°, Grand Cross
Richard W. Schmidt, 33°
Donald F. Schultz, 33°
Jack M. Shepard, 32° KCCH
David D. Swift, 33°
JoAnn VanTrump

Valley of Colorado Springs/Pueblo

David K. Ashley, 32°
Robert M. Burr, 33°
William W. Chinn, 33°
David L. Coberly, 33°
Gordon R. Cooper, 33°
Ben M. Crossno, 33°
Kennard D. Henry, 33°
Kate Leyda
J. R. "Jack" McConnell, 33°
Michael L. McMillan, 33°
Donald A. Noffsinger, 32°
James L. Nunn, 33°
Donald C. Phillips, 33°
James A. Stivers, 33°
Gerome Walton, 32°
Elizabeth Woodman
Jack A. Woodman, 33°

Valley of Grand Junction

Richard S. Carnett, 32° KCCH
Thomas J. Cox, 33°
John W. Groves, 33°
Donald A. Hobbs, 33°
Rodney W. Johnson, 33°
James L. Smith, 33°
Rex Swanson, 32°

Foundation Fellows

A Foundation Fellow is a distinguished designation for an individual who makes a monetary contribution to the Scottish Rite Foundation of Colorado of \$10,000 or more. It is open to all donors regardless of Masonic membership or affiliation.

Foundation Fellows

Robert L. Bartholic, 33°
Esther M. Bartholic
Richard S. Carnett, 32° KCCH
James E. Duncan, 33°
Susan M. Duncan
George A. Frohlick, 32° KCCH
Neva C. Frohlick
Robert W. Gregory, 33°
Deborah Hayes, Ph.D.
James L. Martin, III, Ph.D.
John R. Hendrickson, 33°
William D. Hewit, 33°
Betty Ruth Hewit
Vernon B. Ingraham, 33°, Grand Cross
Bruce A. Kelley
Barbara J. Kelley
Kathryn Kelley Huwaldt
Thomas L. Redditt, Sr., 33°
Elinor P. Redditt
Leon C. Rittenhouse, 32°
Lee E. Schlessman, 33°, Grand Cross
Dolores J. Schlessman
Irving O. Shuel, 32° KCCH
Betty L. Shuel
Roger A. Wainwright, 32°
Ernest O. West, 32°



Dolores and Lee Schlessman with Deborah Hayes (center)

Exhibits

The following Exhibits provide additional information on Foundation activities in 2013.

Exhibit A – Audited Statement of Financial Position

Exhibit B – Audited Statement of Activities

Exhibit C – Comparison of Recent Three-Year Financial Trends

Exhibit D – Recap of RiteCare Children Served in Colorado

Exhibit E – Outcomes Evaluation of Children’s Developmental Progress during Therapy

Exhibit F – Selected Highlights from Individual Partner Programs 2013 Annual Reports

Exhibit G – Scottish Rite Foundation and RiteCare Partner Addresses & Phone Numbers

EXHIBIT A

Audited Consolidated Statement of Financial Position

Scottish Rite Foundation of Colorado
December 31, 2013

Assets

Cash and cash equivalents:			
Unrestricted	\$	765,956	
Temporarily restricted		<u>50,680</u>	\$ 816,636
Prepaid Expenses			805
Interest receivable			66,145
Investments			20,903,967
Fixed assets, net			4,900
Land held for investment			410,036
Beneficial interest in split-interest agreements			<u>934,261</u>
 Total Assets			 <u>\$ 23,136,750</u>

Liabilities and Net Assets

Accounts payable and accrued liabilities	\$	7,207	
Grants payable		<u>185,764</u>	
 Total Liabilities			 \$ 192,971
 Net Assets:			
Unrestricted	\$	21,011,130	
Temporarily restricted		1,528,362	
Permanently restricted		<u>404,287</u>	
 Total Net Assets			 <u>22,943,779</u>
 Total Liabilities and Net Assets			 <u>\$ 23,136,750</u>

Note a: The Scottish Rite Foundation of Colorado requires its annual financial statements to be audited by an independent certified public accountant. An annual IRS form 990 is also prepared. The auditing firm in 2013 was Marrs, Sevier & Company, LLC. The auditors expressed a clean opinion on the 2013 financial statements in their letter to the Board of Trustees dated April 16, 2014. The auditors' report including the audited financial statements and the IRS form 990 are permanently on file in the Foundation office. These documents are available for public review upon request.

Note b: The consolidated financial statements include the financial statements of the Foundation and its wholly owned subsidiary RiteCare LLC, a sole member limited liability company, which holds the Foundation's land held for investment. All transactions and balances between the entities have been eliminated in consolidation. During 2012 the final steps were completed in receiving a parcel of land bequeathed to the Foundation. The land, consisting of 1,569 acres of dry agricultural land located in Cheyenne County, Colorado, is subject to a life estate lease which will remain in effect until the death of the current tenant.

EXHIBIT B

Audited Consolidated Statement of Activities

Scottish Rite Foundation of Colorado
Year ended December 31, 2013

	Unrestricted	Temporarily Restricted	Permanently Restricted	Total
Support & Revenue:				
Investment income:				
Interest and dividends	\$ 614,761			\$ 614,761
Other investment income	5,811			5,811
Realized gains	799,142			799,142
Unrealized gains	736,837			736,837
Donations and memberships	99,379	\$ 20,000		119,379
Change in split interest agreements		78,390		78,390
Donations released from restrictions	<u>20,000</u>	<u>(20,000)</u>		
Total Support & Revenue	<u>2,275,931</u>	<u>78,390</u>	-	<u>2,354,321</u>
Expenses:				
Program grants - Annual	979,217			979,217
Management and general	83,633			83,633
Fundraising	<u>9,682</u>			<u>9,682</u>
Total Expenses	<u>1,072,532</u>	-	-	<u>1,072,532</u>
Change in Net Assets	1,203,399	78,390	-	1,281,789
Net Assets at beginning of year	<u>19,807,731</u>	<u>1,449,972</u>	<u>404,287</u>	<u>21,661,990</u>
Net Assets at end of year	<u>\$ 21,011,130</u>	<u>\$ 1,528,362</u>	<u>\$ 404,287</u>	<u>\$ 22,943,779</u>

Note a: See Note a in Exhibit A.

Note b: See Note b in Exhibit A.

EXHIBIT C

Comparison of Recent Three-Year Financial Trends

The 2013 general and administrative (G&A) overhead rate based on total revenues was 3.6%. The administrative overhead rate based on total revenues for the three-year period 2011-2013 was 4.7%. The effect is that for each dollar of revenue, the foundation has spent less than 5 cents on administrative overhead. Administrative expenses ranged from \$82 to \$89 thousand per year during the three-year period.

Scottish Rite Foundation Financial Recap (based on audited financial statements) 2013

Grants to Partners	\$979 thousand
Children Served	975
Total Expenses	\$1.1 million
G&A Expenses	\$84 thousand
Total Revenue & Support	\$2.4 million
Overhead Rate (G&A/Total Expense)	7.8%
Overhead Rate (G&A/Revenue & Support)	3.6%

Scottish Rite Foundation Financial Recap (based on audited financial statements) 2011-2013

Grants to Partners	\$3.1 million
Children Served	2,467
Total Expenses	\$3.4 million
G&A Expenses	\$254 thousand
Total Revenue & Support	\$5.4 million
Overhead Rate (G&A/Total Expense)	7.6%
Overhead Rate (G&A/Revenue & Support)	4.7%



RiteCare Children – Montrose Memorial Hospital

EXHIBIT D

Recap of RiteCare Children Served in Colorado				
Partner	Geographic Area of Colorado	First Year of Active Partnership	Children Served Since Partnership Inception	Children Served in 2013
Clinic Programs – Service Area: Denver Metro, North, and Northeast Colorado				
Children’s Hospital Colorado – Aurora	Denver Metro Area	1953	10,746	325
Children’s Speech & Reading Center – Fort Collins	North	1998	974	123
University of Northern Colorado – Greeley	North	2001	140	13
Sterling Regional MedCenter – Sterling	Northeast	2006	21	1
University of Colorado – Boulder	North	2007	281	37
Total Children Served in Service Area			12,162	499
Clinic Programs – Service Area: South and Southeast Colorado				
Children’s Hospital Colorado Therapy Center – Pueblo (clinic operation assumed by Children’s Hospital Colorado in 2001)	South	1987	872	37
Children’s Hospital Colorado at Memorial Hospital – Colorado Springs (clinic operation assumed by Children’s Hospital Colorado in 2013)	South	1997	520	44
Arkansas Valley Regional Medical Center – La Junta	Southeast	2006	23	2
Let’s Talk! Speech Therapy – Cañon City	South	2006 (discontinued in 2007)	1	0
Total Children Served in Service Area			1,416	83
Clinic Programs – Service Area: West and Southwest Colorado				
St. Mary’s Life Center – Grand Junction	West	1986	1,337	96
Montrose Memorial Hospital	West	1998	482	68
Total Children Served in Service Area			1,819	164
TOTAL CLINIC PROGRAM CHILDREN SERVED			15,397	746
Early Language Development Programs – Service Area: West and Southwest Colorado				
The Piñon Project – Cortez	Southwest	2000	1,630	157
Western Slope Head Start – Grand Junction	West	2005	520	72
Total Early Language Development Program Served			2,150	229
TOTAL RITECARE CHILDREN SERVED			17,547	975

EXHIBIT E

Outcomes Evaluation of Children's Developmental Progress during Therapy

The outcomes evaluation was implemented statewide in 2005 to measure the effectiveness of therapy. The evaluation is based on the Child Development Inventory which is a parent rating of the child's development in social communication skills, receptive language, expressive language and other domains. As of December 31, 2013, the inventory database includes 1,435 children.

Measures include comparing children's developmental age in each domain with their chronological age. If the child's developmental age is equivalent to his/her chronological age, the developmental quotient is 100. Typically developing children have developmental quotients in all domains ranging from 85 to 115.

On the average, children enrolled in the Foundation's clinical program show developmental delay, most pronounced in the language domains of expressive language, language comprehension, and social skills. The most robust developmental gains for children enrolled in therapy are in the area of social skills. Most social skills items in the inventory relate to social-communicative behaviors (e.g., "asks for help" . . . "understands 'wait a minute'" . . . "talks about how to do" . . . "makes excuses" . . .).

Children who enter Foundation clinical programs with less significant delays in the language domains show progress within six to 12 months of therapy. These youngsters are typically discharged from therapy when they approach the normal range of developmental quotients.

Children who enter Foundation clinical programs with the more significant delays in the language domains make slow, steady progress and may remain in therapy for up to two years.

Charts A, B, and C summarize outcome results for children enrolled in therapy in Colorado RiteCare Language Programs. Chart A shows outcomes for children discharged from therapy divided into "short term" versus "long term" treatment programs. Short term patients typically need 12 months or less of therapy to make significant gains. Long term patients typically require up to two years of therapy to achieve their communication potential. Charts B and C show language development outcomes for Social Skills, Expressive Language, and Receptive Language, for two groups of children with specific diagnoses ~ children with apraxia of speech (a motor speech disorder) and children with articulation (speech pronunciation) disorders. Both groups of children show gains in communication skills, most notably in social communication (social skills) with children with articulation disorders showing solid progress into the normal developmental range of this skill within 3 – 8 months of therapy.

An outcomes evaluation is also conducted for children in learning therapy. This evaluation includes several components such as the Word Identification and Spelling Test and a standardized test for sound/letter association (associating the sound of a letter, like "b" with the written symbol B), word identification, and spelling. The evaluation measures a child's percentile ranking in important literacy skills relative to their chronological age and grade. The evaluation is conducted at initiation of therapy and at six-month intervals thereafter.

Chart A

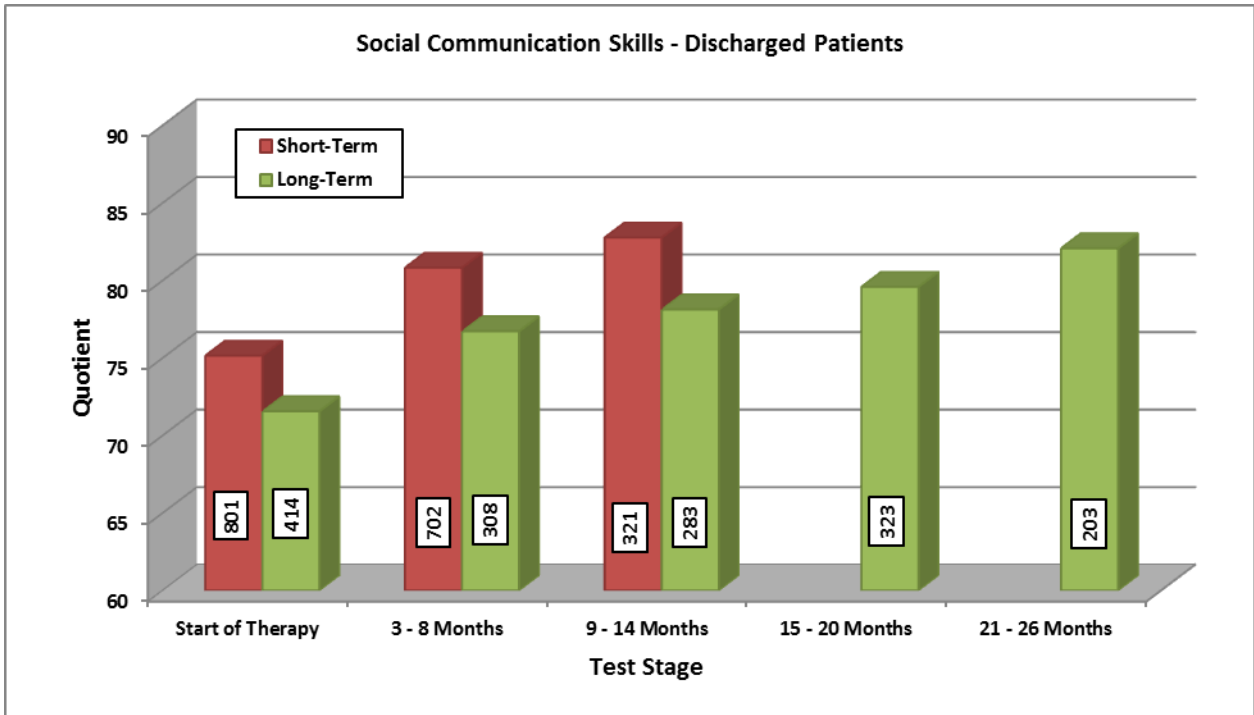


Chart B

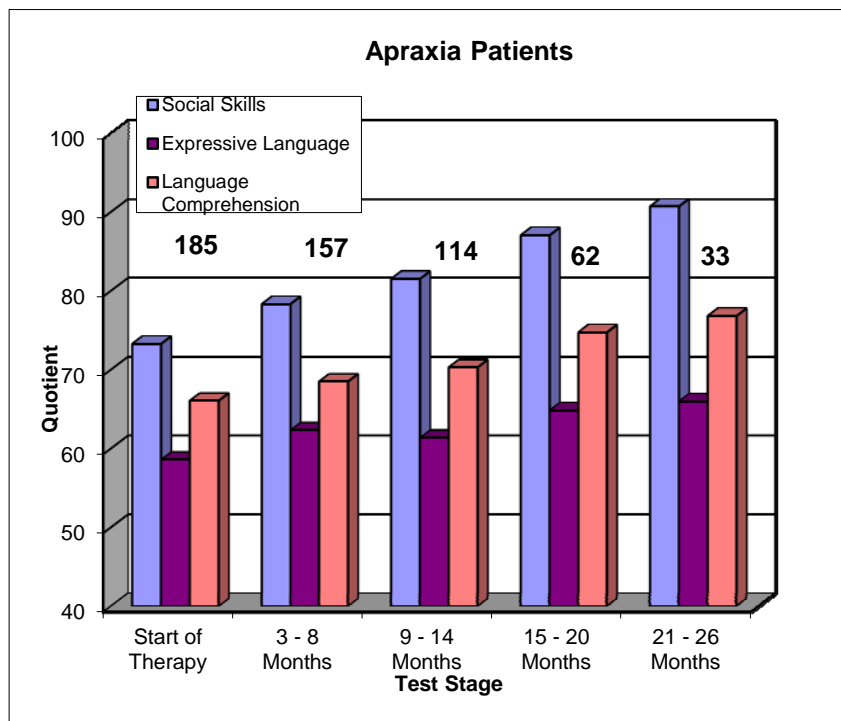
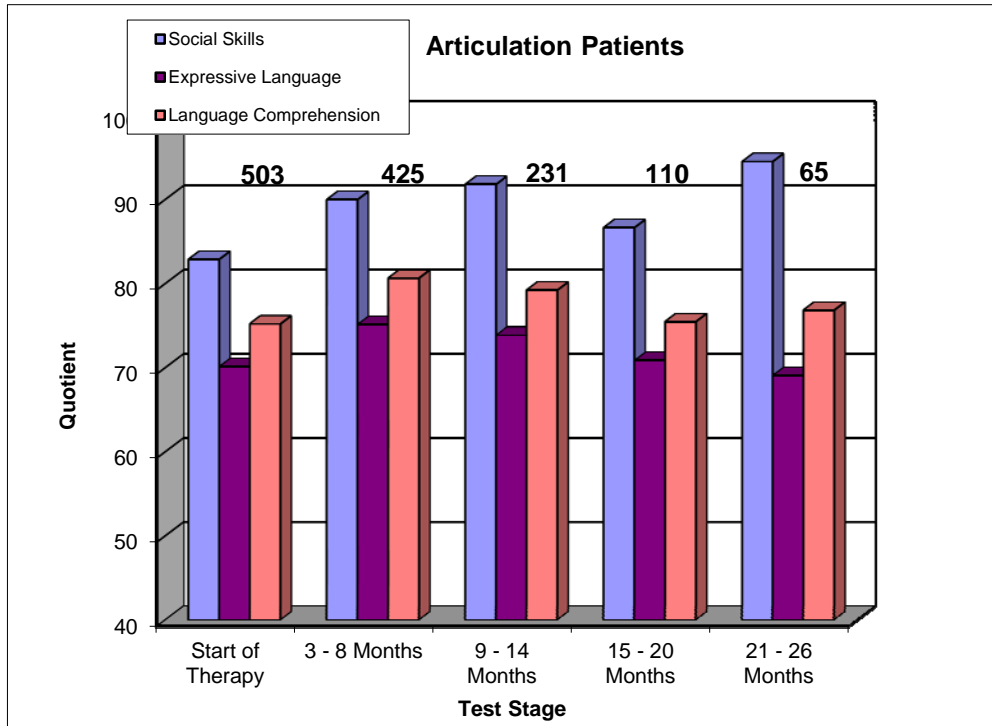


Chart C



Santa Claus is Jim Stivers of the Scottish Rite in Colorado Springs
Photo courtesy of RiteCare Program: Memorial Hospital Pediatric Rehabilitation Services – Colorado Springs

EXHIBIT F

Selected Highlights from Individual Partner Programs 2013 Annual Reports

Children's Hospital Colorado Aurora & Denver Area Network of Care



Children's Hospital Colorado at Anschutz Medical Campus, Aurora, Colorado
(Source: Children's Hospital Colorado)

1. 241 children received speech therapy and treatment at Children's Hospital Colorado and its Denver Metro Area clinics with Scottish Rite Foundation financial assistance. These children ranged in age from less than one year through school age, with the majority of children in the age range of three through six years.
2. 35 children received multidisciplinary cleft palate clinic evaluations.
3. 31 children and 8 siblings attended the *Talking with Technology* Camp – a week-long mountain camp program for children and young people who use computerized communication devices. In addition to the Scottish Rite Foundation of Colorado, the *Rollie R. Kelley Family Foundation* provided generous financial support for this camp. The 2013 camp was the 27th consecutive year for the camp which is held annually near Empire, Colorado at the Easter Seals facility.
4. 14 children, 18 siblings, and 27 parents participated in a family-centered, parent-education group to enhance communication skill development in their young child. This special program, *First Steps*, is a weekend learning experience for families considering assistive communication technology for their young child. The *Rollie R. Kelley Family Foundation* provided generous financial support for this program.
5. 4 children were in the telepractice program ~ the delivery of evaluation and treatment services over the internet to families in remote, rural, or underserved communities.



**The Rollie Kelley Children – Kathryn, Barbara, and Bruce
The Rollie R. Kelley Family Foundation members**



Talking with Technology, CHC Memorial Hospital – at Printers Park

Children’s Hospital Colorado Therapy Care – Pueblo

1. 37 children received speech therapy and treatment with financial assistance from the Scottish Rite Foundation.
2. The clinic added learning services in 2013. Reading therapy was provided to children after school and in the summer months.
3. Clinic staff provided consultation and parent education services to the *Soaring Eagles Center for Autism*. The RiteCare clinic director, Martha Drake, serves on the Center’s Board of Directors.

St. Mary's Life Center – Grand Junction



St. Mary's Life Center

1. 96 children received speech-language services with financial assistance from the Scottish Rite Foundation. Children served throughout the year were between the ages of 2 to 7 years. Children up to 10 years of age were served in the summer programs. Children were from the following communities: Grand Junction, Clifton, Palisade, Whitewater, Fruita, DeBeque, Collbran, Cedaredge, Mesa and Crawford.
2. Children receiving services at St. Mary's are children with autism, developmental delays, hearing loss, dysfluency, voice disorders, apraxia, other oral motor disabilities, cleft lip and palate, learning disabilities, cerebral palsy, and those children needing augmentative communication systems.
3. St. Mary's Speech and Language Department staff, in addition to serving children at the Life Center and Hospital, are involved in several local and statewide organizations including: Special Needs Advisory Committee, Interagency Counsel for the Child, Colorado Discoverability, School District Child Find Assessment Team, Cleft Palate Team of Western Colorado, Children with Special Needs Task Force, Colorado Home Intervention Programs Facilitation, Dyslexia Family Support Group, Mesa County Partnership for Children and Families, Early Childhood Leadership Commission, The Colorado Speech and Hearing Association, and The American Speech-Language Hearing Association.
4. St. Mary's Hospital is a teleconference host site for educational opportunities offered through the Colorado Speech and Hearing Association and Children's Hospital Colorado, allowing for local and regional speech and language therapists to come together and share in ongoing education.

Children's Hospital Colorado at Memorial Hospital – Colorado Springs



Memorial Hospital Rehabilitation Clinic at Printer's Park

1. From January 2013 through March 2013, this clinic was leased to University of Colorado Health at Memorial. Beginning April 1, 2013, this clinic officially became part of Children's Hospital Colorado with three locations in Colorado Springs: (1) Children's Hospital Colorado Therapy Care at Printer's Park, (2) Children's Hospital Colorado Therapy Care at Briargate, and (3) Children's Hospital Colorado at Memorial Hospital.
2. 44 children received speech-language services with financial assistance from the Scottish Rite Foundation.
3. The program works closely with specialty clinics including Autism and Developmental Disorders Clinic, Infant Developmental Disorders Clinic, and Pediatric Oral Feeding Clinic.

Montrose Memorial Hospital – Montrose

1. 68 children were served with financial assistance from the Scottish Rite Foundation in a five county area by clinics in Montrose and Delta.
2. Special summer programs were offered for school age children, preschoolers, and toddlers. In addition, the clinic conducted two Augmentative Alternative Communication outreach opportunities providing evaluations, therapy, and family/teacher education.

University of Northern Colorado – Greeley



Gunter Hall, UNC Campus - Home to the RiteCare Clinic

1. 13 children were served with financial assistance from the Scottish Rite Foundation of Colorado.
2. UNC's Speech-Language Pathology and Audiology Clinic provides training for graduate students by giving services under supervision during their entire academic program.
3. The *Talking and Listening for Preschoolers* program has been on-going since the summer 2007 when created with support from the *Daniels Fund* and Scottish Rite Foundation. The program focuses on speech production (articulation and phonology) with a secondary language-literacy focus (development of vocabulary and concepts, oral and written sound and word awareness, comprehension and expression of narratives and stories). Children are in the program for 1½ hours twice weekly. The parents meet with the speech-language pathologist and graduate student clinicians to share information and learn about language development strategies.
4. The RiteCare Program Director at UNC worked closely with members of the Literacy Action Network to discuss the opportunities provided at the UNC clinic. The Director developed new collaborations with the SEVA Community, Unite for Literacy, and the Weld County Department of Public Health and Environment and is serving as a member of the Literacy Action Network to maintain these community connections.

University of Colorado – Boulder



Speech-Language Hearing Center - CU-Boulder Campus

1. 37 children were served with financial assistance from the Scottish Rite Foundation.
2. CU's Speech Language and Hearing Center on the Boulder campus provides training for graduate students by giving services under supervision of certified clinical faculty during their entire academic program.
3. The Center's focus is to identify and serve young children and their families in Boulder County and surrounding areas who may not otherwise receive speech and language therapy due to a lack of funding for therapeutic services.
4. The Child Learning Center offers toddler, preschool and parent education programs on campus and has begun to offer *EL Grupo de Familias* and other programs at the Wilderness Early Learning Center in north Boulder.
5. The *Story of Friendship* program focuses on specific communication and language learning needs of children with autism spectrum disorder (ASD) in the natural context of their school environment and incorporates peers as friends. It is a community-based program housed at Creekside Elementary School in the Boulder Valley School District.
6. The Space Camp and Space Exploration programs offer special services for children identified with Asperger's Syndrome and their friends – focusing on the specific language, communication, and language learning needs of children identified with ASD.

Sterling Regional MedCenter – Sterling

1. One child was served with financial assistance from the Scottish Rite Foundation.
2. The speech-language pathologist providing therapy services retired in 2013. When the MedCenter is able to hire a replacement, the Scottish Rite Foundation will continue its support for in-clinic therapy care for young children.

Arkansas Valley Regional Medical Center – La Junta

1. Two children were served with financial assistance from the Scottish Rite Foundation of Colorado.
2. This center is the only hospital or clinic in the southeastern Colorado area (on the Highway 50 corridor east of Pueblo) that provides speech-language pathology services for children, except in the school setting.

Children’s Speech and Reading Center – Fort Collins



Two Children at the CSRC Clinic

1. 123 children were served with financial assistance from the Scottish Rite Foundation. 50 children received speech-therapy services and 73 children received early literacy services in area preschools.
2. Free speech-language and reading screens were offered on an on-going basis with families coming from the communities such as Fort Collins, Loveland, Greeley, Estes Park, Johnstown, Berthoud, Windsor, and Wellington.
3. The Center provided a variety of individual and small group programs for early childhood communication and reading readiness.

The Piñon Project – Cortez

1. 157 children were served with financial assistance provided by the Scottish Rite Foundation.
2. The program funded by the Scottish Rite Foundation is known as the Treasure Chest Program, a preschool-age early language development program. It serves needy and low income children in southwestern Colorado and is in great demand by families of preschoolers.
3. The Treasure Chest Program was conducted at the following locations: (1) Cortez (Cortez Library, Beech Street Preschool, Montelores Early Childhood Council Family Nights, and The Piñon Project’s Tree House Early Learning Center), (2) Dolores (Teddy Bear Preschool and Dolores Library), and (3) Dove Creek (Seventh St. Preschool and Doves Nest).

4. The theme chests were also being used in trainings with preschool teachers at Ute Mountain Ute Tribe in Towaoc, CO with help from the school readiness coordinator with The Montelores Early Childhood Education Council.
5. The Piñon Project also serves as a telepractice speech therapy location for children and parents enrolled in Children's Hospital Colorado internet based speech therapy.


Western Slope Head Start (Rocky Mountain SER) – Grand Junction

1. 72 children were served in the Treasure Chest Program with funding provided by the Scottish Rite Foundation of Colorado.
2. This Treasure Chest Program provides education and training for children and their families in a home-based environment.
3. Program staff coordinate with School District 51 and St. Mary's Life Center to identify children who need services for speech/language delays.



Two Brothers Supporting Each Other - CHC Talking with Technology Camp

Exhibit G

Scottish Rite Foundation and RiteCare Partner Addresses and Phone Numbers	
<p>Scottish Rite Foundation of Colorado 1370 Grant Street Denver, CO 80203 303-861-2410 (toll free: 866-289-6797) www.scottishritefoundation.org ritecare@scottishritefoundation.org</p>	<p>Children’s Hospital Colorado Department of Audiology, Speech Pathology, and Learning Services 13123 E. 16th Ave., B-030 Aurora, CO 80045 720-777-6800</p>
<p>Arkansas Valley Regional Medical Center Rehabilitation Services 1100 Carson Avenue La Junta, CO 81050 719-383-6456</p>	<p>Children’s Speech and Reading Center 1330 Oakridge Drive Fort Collins, CO 80525 970-419-0486</p>
<p>Children’s Hospital Colorado Therapy Center – Pueblo 704 Fortino Blvd, Suite A Pueblo, CO 81008 719-305-8300</p>	<p>Children’s Hospital Colorado Therapy Care at Printers Park 175 S. Union Blvd., Suite 255 Colorado Springs, CO 80910 719-305-8000</p>
<p>Montrose Memorial Hospital Mountain View Therapy 800 South Third Street Montrose, CO 81401 970-240-7369</p>	<p>St. Mary’s Life Center Language Development Clinic 1100 Patterson Road Grand Junction, CO 81506 970-298-6158</p>
<p>Sterling Regional MedCenter Rehabilitation Services 615 Fairhurst Street Sterling, CO 80751 <i>program on hiatus</i></p>	<p>University of Northern Colorado Audiology and Speech Language Sciences Gunter Hall, Campus Box 140 Greeley, CO 80639 970-351-1084</p>
<p>The Piñon Project 300 N. Elm St. P.O. Box 1510 Cortez, CO 81321 970-564-1195</p>	<p>Western Slope Head Start Rocky Mountain SER 235 North 7th Street, Suite A Grand Junction, CO 81501 970-243-9318</p>
<p>University of Colorado – Boulder Speech, Language and Hearing Sciences 2501 Kittredge Loop Road Campus Box 409 Boulder, CO 80309 303-492-5375</p>	 <p style="text-align: center;"> RiteCare SPEECH LANGUAGE AND LITERACY Scottish Rite Masons Helping Children Communicate Scottish Rite Foundation of Colorado </p>